



ESTEAM
CLEANING SYSTEMS

2017 PARTS CATALOG

TABLE OF CONTENTS

VALVES & KITS.....3-5

PUMPS & MOTORS.....6-8

VACUUM MOTORS.....9

HOSE & CUFFS.....10-11

QUICK CONNECTS.....11



WANDS & HAND TOOLS



VALVES & KITS



535-115 Valve, V800 (new)

538-115 Kit Repair, V800 (new) stem,ring, cap,nut



535-007 Valve, 1200 psi

547-030 Kit Repair, 1200 PSI Valve



535-011 Valve, Angle SS

540-015 Kit Repair, Angle Valve



535-100 Valve, MP 300 psi

538-020 Kit Repair, MP Valve 300 PSI

VALVES & KITS



- 539-005** Kit Repair, Para Plate Valve
- 539-010** Kit Repair, Seals Para Plate
- 539-020** Kit Repair, Spring Para Plate

535-020 Valve, Para Plate



535-105 Valve, 400 psi Detailer

- 538-025** Kit Repair, MP Valve (sml nut 5/8)



538-050 Valve, Hide a Hose

- 538-055** Kit Repair, Hide-a-Hose



535-090 Valve, Flo Control

- 538-055** Kit Repair, Hide-a-Hose

VALVES & KITS



538-015 Kit Repair, (P) Valve new

535-110 Valve, (P) 500 psi (new)



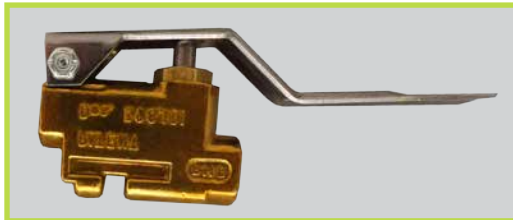
540-015 Kit Repair, Angle Valve

535-012 Valve, Angle Brass



538-005 Kit Repair, LP Valve

535-055 Valve, LP 120 psi (plastic)



538-025 Kit Repair, MP Valve (sml nut 5/8)

535-125 Valve, Brass Hi Temp

PUMPS & MOTORS



511-100 Esteam 100 PSI Diaphragm Pump

- 511-205** Pressure Switch 100 PSI
- 511-215** Upper Housing Assembly 100 PSI
- 511-225** Valve Housing Assembly 100 PSI
- 511-235** Lower Housing Assembly 100 PSI



511-105 Esteam 150 PSI Diaphragm Pump

- 511-210** Pressure Switch 150 PSI
- 511-220** Upper Housing Assembly 150 PSI
- 511-230** Valve Housing Assembly 150 PSI
- 511-240** Lower Housing Assembly 150 PSI



511-106 Esteam 200 PSI Diaphragm Pump

- 511-211** Pressure Switch 200 PSI
- 511-221** Upper Housing Assembly 200 PSI
- 511-231** Valve Housing Assembly 200 PSI
- 511-241** Lower Housing Assembly 200 PSI



511-110 Esteam 75 PSI 12 Volt Transfer Pump



511-300 Esteam 100 PSI Diaphragm **220 Volt** Pump



511-305 Esteam 150 PSI Diaphragm 220 Volt Pump



512-505 PumpTec 200 PSI Pump & M70 Motor

PUMPS & MOTORS



512-500 Pumptec 200 PSI Pump

- 512-050** Kit A Plunger & Seals
- 512-025** Kit B Vavles & O Rings
- 512-070** Kit C Cam & Bearing



512-510 M70 Motor for 200 PSI Pump



512-542 Pumptec 500 PSI Pump & MI 10 Motor



512-585 Pumptec 500 PSI Pump (Ninja)

- 512-555** Kit A Plunger & Seals
- 512-560** Kit B Valves & O Rings
- 512-565** Kit C Cam & Bearing



512-551 MI 10 Motor for 500 PSI Pump (Ninja)



515-500 Pump for E200 Spotter

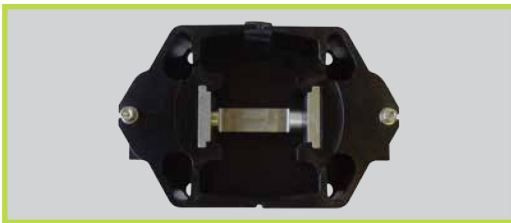
PUMPS & MOTORS



512-600 Pumptec 1000 PSI Pu,p & 1.5 HP Motor



512-610 M64 Motor for 1000 PSI Pump (E1200)



512-605 Pumpteck 1000 PSI Pump (E1200)

512-615 Kit A Plunger & Seals

512-620 Kit B Vavles & O Rings

512-625 Kit C Cam & Bearing



516-020 Cat Pump 5CP2120W

516-200

Seal Kit Hi Temp.

516-205

Valve Kit

516-216

Plunger Ceramic 5CP

516-218

Oil Cap

516-219

O Ring Oil Cap

516-215

Crankshaft Oil Seal



516-025 Cat Pump 5CP 2150W

516-200

Seal Kit Hi Temp.

516-205

Valve Kit

516-216

Plunger Ceramic 5CP

516-218

Oil Cap

516-219

O Ring Oil Cap

516-215

Crankshaft Oil Seal

VACUUM MOTORS



355-450 Vac Motor 2 Stage (SM)



355-451 Vac Motor 2 Stage (SM) with Straight Adaptor



355-300 Vac Motor 2 Stage (Warrior)



355-305 Vac Motor 3 Stage (Warrior)



355-551 Vac Motor 3 Stage (SM) with Straight Adaptor



355-550 Vac Motor 3 Stage (SM)

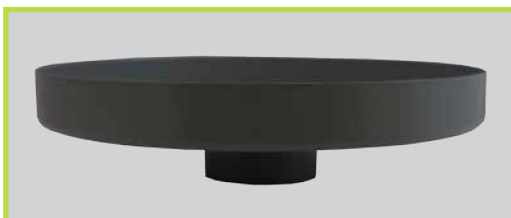


355-120 Vac Motor 3 Stage Large



355-125 Vac Motor E250 Spotter

355-126 Vac Motor E200 Spotter

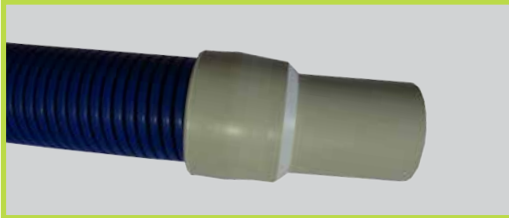


355-405 Vac Cap with Straight Adaptor



355-150 Vac Motor 2 Stage 8.4"

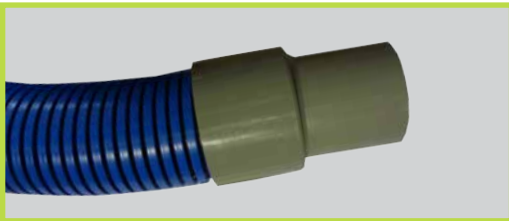
HOSE & CUFFS



- 260-038-16** Vac Hose 1.5" x 16 ft with Cuffs
- 260-038-25** Vac Hose 1.5" x 25 ft with Cuffs
- 260-038-50** Vac Hose 1.5" x 50 ft with Cuffs



- 260-238-25** Vac Hose 2" x 25 ft with Cuffs
- 260-238-50** Vac Hose 2" x 50 ft with Cuffs



- 260-400-50** Vac Hose 2.5" x 50 ft with Cuffs



- 261-042-16** Solution Hose HP ¼" x 16 ft with QC
- 261-042-25** Solution Hose HP ¼" x 25 ft with QC
- 261-042-50** Solution Hose HP ¼" x 50 ft with QC
- 261-042-100** Solution Hose HP ¼" x 50 ft with QC
- 261-042-150** Solution Hose HP ¼" x 150 ft with QC



579-005 Cuff 1 1/2" White



579-010 Cuff 1 1/2" Swivel, White

HOSE & CUFFS



579-012 Cuff, Expander 1 1/2" x 2" SLP



579-025 Cuff 2 x 1 1/5" SLP



579-015 Hose Joiner 1 1/2"



579-016 Hose Joiner 2" x 1 1/2"



579-035 House Joiner 2"



579-036 Hose Joiner S.S. 2 1/2" x 2"

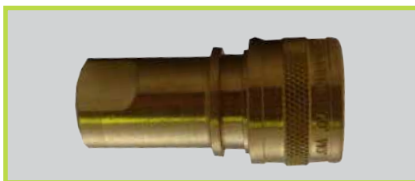


579-037 Hose Joiner 2 1/2" x 2 1/2"



579-040 Hose Cuff 2" Grey

QUICK CONNECTS



580-100 1/8" Female Quick Connect



580-105 1/8" Male Quick Connect



580-010 1/4" Female Quick Connect



580-015 1/4" Male Quick Connect



580-130 3/8" Female Quick Connect



580-135 3/8" Male Quick Connect



**3750-19th Street NE
Calgary, AB T2E 6V2
Phone: 403-291-7050 1-800-653-8338
Fax: 403-291-0546
www.esteem.com**

**Sales:
Lou Querin email: lquerin@esteem.com
Miranda Himmelman email: miranda@esteem.com**