

PRO DRY AIRMOVER

Owner's Manual

Please Read And Save These Instructions



PRO DRY 2.5-AMP

- ❖ 2-Speed 1/3 Horsepower Motor
- ❖ Maximum velocities up to 3200 FPM
 - ❖ Best Balanced Air Flow
- ❖ Stackable for storage/use
 - ❖ Directional Airflow
 - ← Horizontal
 - ↗ 45° Angle
 - ↑ 90° Angle

SPECIFICATIONS:

Power: 115 VAC, 60 Hz

Drive Motor: 1/3 Horsepower, 2-Speed

Shipping Weight: 35 Pounds

Speed	RPM	FPM	AMPS
High	1100	3200	2.5
Low	790	1800	2.0

ⓘ GENERAL SAFETY WARNINGS

When using any electrical equipment, basic precautions should always be followed, including the following:

- **Not** intended for outdoor use.
- **Do not** operate the unit with a cut or frayed power cord.
- **Do not** unplug the unit by pulling on the cord. Grasp the plug firmly and pull it out of the wall socket or power receptacle.
- **Always** use a grounded outlet.
- **Use** only as described in this manual.
- **Never** operate electrical equipment in standing water.
- **Never** operate with safety grills removed. Personal Injury may result!
- **Do not** stick fingers or other objects through the safety grills.
- **Never** restrict airflow to the unit. This may cause it to overheat.
- **Never** service or clean this unit while it is plugged in.
- **Never** sit or stand on the unit or use as a shelf.
- **Ensure** that children do not have access to the equipment. Do not allow children to play with or near the equipment, or in its airflow.
- **Do not** use when you are tired, distracted or under the influence of drugs, alcohol or medication.
- **Do not** handle plug with wet hands.
- **To reduce** the risk of fire or electric shock, do not use this air mover with any solid-state speed control device.
- **Do not** leave device plugged in when not in use.
- **Store** this equipment indoors; do not expose to harsh weather.
- **Use** only Manufacturer's recommended attachments.
- **Do not** pull or carry by the cord, use the cord as a handle, close doors on the cord, or pull the cord around sharp edges.
- **Do not** run over cord.
- **Keep** cord and housing away from heated surfaces.
- **Turn** the unit off before unplugging.

OPERATING INSTRUCTIONS

1. Check the machine for any obstructions in the fan or airflow areas before plugging in the unit or operation of the unit.
2. Set the machine to desired position for operation.
3. Plug the power cord into a GFCI outlet.
Do not use an extension cord in conjunction with the standard power cord.
4. The machine has three power settings. **ALWAYS** turn the power knob to the **HIGH** position then to the desired speed.

Troubleshooting		
SYMPTOM	PROBLEM	SOLUTION
Unit will not turn on	Not plugged in	Plug unit into proper outlet
	Switch is worn	Replace Switch
	Tripped circuit breaker	Reset Breaker
	Short in power cord	Replace power cord or replace cord end
Air mover will not operate on all speeds	Capacitor on motor is damaged	Replace motor
	Switch is worn	Replace switch
Air Mover runs/starts slowly	Capacitor on motor is worn or damaged	Replace motor
	Capacitor terminal may be shorting	Reposition or insulate terminal
The fan is rubbing	Fan is out of round	Replace fan
Air mover is making strange noises	There is a foreign object stuck	Turn off motor and remove object
	Motor bearing is worn	Replace motor
	Fan is rubbing	Replace Fan



WARRANTY INFORMATION

All equipment for warranty *MUST* be returned to your distributor

WARRANTY AND LIMITATION OF LIABILITY

The Company warrants to the first end-user purchaser that the equipment and parts thereof, when shipped, will be free from defects in materials and workmanship. If any such defects exist or later appear, the Company shall provide prompt remedial action, as stated herein, to correct the defect. The Company shall have no obligation or liability under this **Warranty** unless the customer has obtained a Material Return Authorization (MRA). To get an MRA you must present proof of purchase, by the use of the original sales receipt. To obtain an MRA, call your Distributor and ask for the Customer Service Department, which will then issue an MRA number and will arrange for repair or replacement, at our option, according to the following schedule:

This warranty covers Centrifugal Air Movers – Model PRO DRY

Metal fan wheels shall be warranted for 90 days from original purchase date.

90 Day – 100% labor and parts (all components other than that noted above).

Year One – 100% parts only (all components other than that noted above).

Year(s) Two through Seven – Only materials and workmanship of the housing are covered

Warranty service shall only be performed by an authorized service provider.

Freight to **Distributor** is the responsibility of the end-user. The end-user is responsible for normal care and proper return packaging.

Equipment or Parts thereof, manufactured by others are warranted hereunder only to the extent of such manufacturer's warranty to.

Since after purchase, the Equipment and Parts thereof are under the sole control of the Purchaser, this Warranty is subject to, and shall be applicable only if, the following conditions are met:

- a. **Pro Dry** instructions as to usage, operation and maintenance have been followed;
- b. The Equipment and Parts thereof, have been used under normal indoor operating conditions.
- c. The Equipment and Parts thereof have been correctly operated and maintained and have not been damaged by misuse, neglect, or accident.
- d. The purchaser has not attempted or performed corrective work or change on the Equipment and/or Parts thereof.
- e. The Company shall have received notice (MRA Request) of any defect **no later than thirty (30) days** after the Purchaser first had knowledge of the same.

This warranty is in lieu of any and all other warranties, express, implied or statutory including, without limitation, warranties of merchantability and fitness for a particular purpose or use.

LIMITATION OF LIABILITY

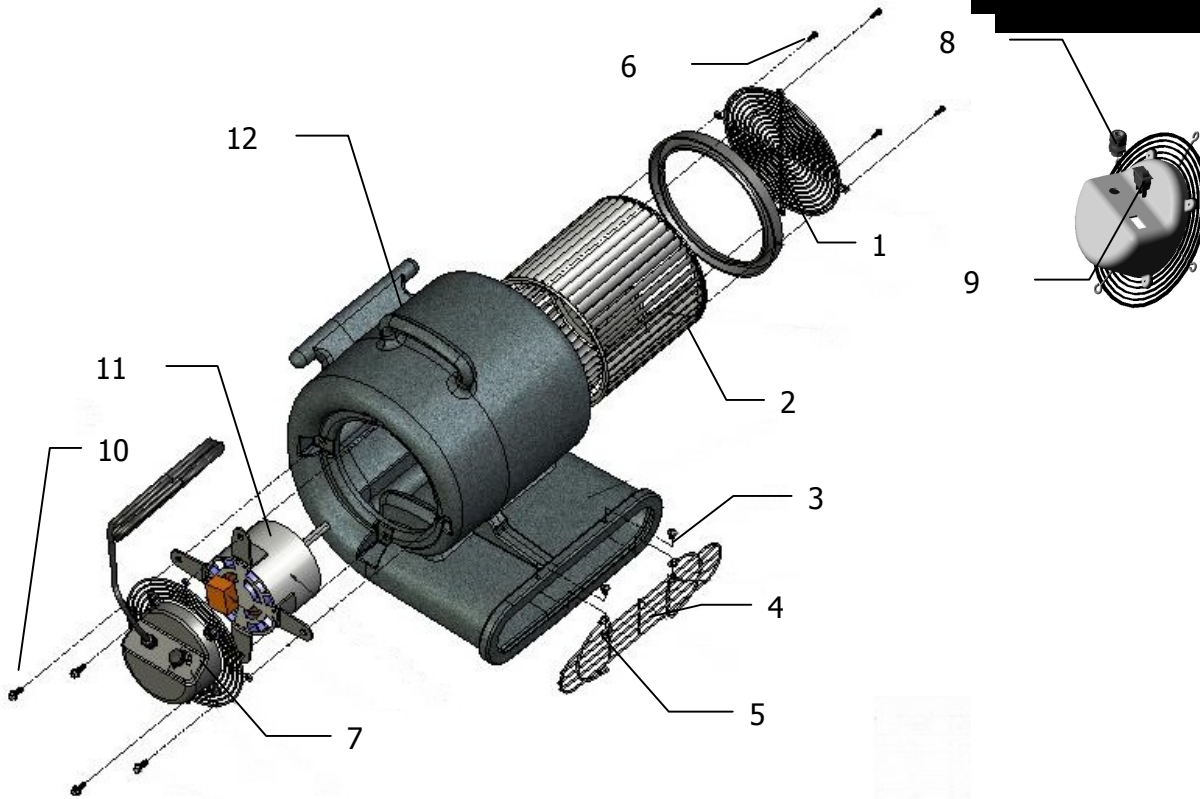
THE COMPANY SHALL HAVE NO LIABILITY WHATSOEVER IN ANY EVENT FOR PAYMENT OF ANY INCIDENTAL OR CONSEQUENTIAL DAMAGES, INCLUDING, WITHOUT LIMITATION, WATER DAMAGE (THE END-USER SHOULD TAKE PRECAUTIONS AGAINST SAME), LOST PROFITS, DELAY, OR LOSS OF USE, OR DAMAGES FOR INJURY TO ANY PERSON OR PROPERTY. BY ACCEPTING THE EQUIPMENT AND/OR PARTS THEREOF, THE FIRST END-USER PURCHASER OR SUBSEQUENT USER AGREES THAT THE COMPANY SHALL NOT BE LIABLE FOR INDEMNIFICATION OR CONTRIBUTION (IN WHOLE OR IN PART) EITHER EXPRESSLY OR BY IMPLICATION.

IF FOR ANY REASON ANY OF THE FOREGOING PROVISIONS SHALL BE INEFFECTIVE, THE COMPANY'S LIABILITY FOR DAMAGES ARISING OUT OF ITS MANUFACTURE OR SALE OF ITS EQUIPMENT OR PARTS, OR USE THEREOF, WHETHER SUCH LIABILITY IS BASED ON WARRANTY, CONTRACT, NEGLIGENCE, STRICT LIABILITY IN TORT OR OTHERWISE, SHALL NOT IN ANY EVENT EXCEED THE FULL PURCHASE PRICE OF SUCH EQUIPMENT AND PARTS THEREOF.

Any action against the Company based upon any liability or obligation arising from or under any law applicable to the sale of its Equipment or Parts, or the use thereof, must be commenced within six months after the cause of such action arises.

PRO DRY AIRMOVER

Exploded view with
Parts List



Item	Description	Qty Req.	Part#	Item	Description	Qty Req.	Part#
1	Guard, Fan Side	1	560-020	9	Switch, Rocker, 2-Speed	1	305-100
2	Blower Wheel, SM Metal	1	333-024	10	Flange Bolt, 1/4-20x3/4	4	405-008
3	Bolt, 1/4-20x3/4 Hex Head	2	405-005	11	Motor, 1/3 HP 115V	1	300-036
4	Front, Guard	1	560-022	12	Housing, Blower Blue	1	495-140
5	1/4-20 Nylon Nut	2	400-135				
6	Screw, 8-15x3/4	4	410-125				
7	Guard, Black Cord	1	560-021				
8	Strain Relief	1	335-020				