

ESTEAM CLEANING SYSTEMS

E1700 100 MODELS

OWNER'S MANUAL

Congratulations on your selection of a new 1700 Series extractor built in Canada by "Esteam Cleaning Systems." Our goal has been to produce the best high performance line of carpet cleaning equipment on the market today. Reading your owners manual will help to achieve maximum benefit from your purchase.



760-112

TABLE OF CONTENTS

	Page No.
Introduction on the E1700 Series	3
Specifications	3
Maintenance	4
Safety Information	5
Operating Instructions	6
Trouble Shooting	9
Schematic Diagram	13
Circuit Indicator Option	28
Warranty Registration	34
Warranty	35

INTRODUCTION

Be it a small residential job or a large commercial contract, Esteam industrial carpet cleaning extractors are right for your needs. The E1710 is an economical, compact, portable soil extractor with the power and capabilities required by professional cleaning technicians.

Only the highest quality components go into our equipment, to deliver you strength and reliability in a long life, high performance machine. The E1710 's housing is made of high impact, unbreakable polyethylene. We are so confident in the housing that we put a lifetime guarantee on it.

The E1710 incorporate a unique dual vacuum system. Two vacuum motors hooked up in sequence produce 150" of water lift and 185" of water lift with optional 2-3 stage. To compliment the vacuum lift the E1710 comes with a 100 PSI Diaphragm pump. The E1710 comes complete with an optional 200°F internal heater.

The E1710 's clean water solution tank has a 17 gallon capacity and the dirty water recovery tank has a 14.5 gallon capacity. Built into the recovery tank the E1710 comes standard with high water automatic shut off. You never have to fear overfilling your recovery tank as the vacuums will automatically stop extracting when the recovery tank becomes full.

SPECIFICATIONS E1710

	<i>E1710</i> <i>E1710-20</i>	<i>E1710-05</i> <i>E1710-20-05</i>	<i>E1710-10</i> <i>E1710-20-10</i>
<i>ELECTRICAL</i> Amps Volts	One cord 15 amps 115 volts (220volts)	Two cords 15 amps per cord 115 volts (220 volts)	Two cords 15 amps per cord 115 volts (220 volts)
<i>VACUUM MOTOR</i> Cfm's Vacuum lift	2-2 stage 94 150"	2-3 stage High Performance 101 185"	2-2 stage 94 150"
<i>PUMP</i>	100 psi	100 psi	100 psi
<i>INTERNAL HEATER</i>	N/A	N/A	1850 watt / 200°F
<i>SOLUTION TANK</i> (Clean water)	17 gallons (64.5 litres)	17 gallons (64.5 litres)	17 gallons (64.5 litres)
<i>RECOVERY TANK</i>	14.5 gallons (55.2litres)	14.5 gallons (55.2 litres)	14.5 gallons (55.2 litres)
<i>LENGHT</i>	25.5 inches (65 cm)	25.5 inches (65 cm)	25.5 inches (65 cm)
<i>WIDTH</i>	17.5 inches (45 cm)	17.5 inches (45 cm)	17.5 inches (45 cm)
<i>HEIGHT</i>	37 inches (94 cm)	37 inches (94 cm)	37 inches (94 cm)
<i>WEIGHT</i>	102 lbs (46 kgs)	107 lbs (48.5 kgs)	112 lbs (50.5 kgs)

MAINTENANCE

1. After each job, disconnect the vacuum hose and run the vacuums for 3 to 5 minutes to eliminate moisture build up in the components. This prolongs vacuum life and reduces the servicing the vacuums will require. If excess water enters the vacuums due to failure of the float ball shut-off system, run the vacuums for at least 15 minutes, and spray a small amount of penetrating oil (i.e. WD-40) directly into the vacuum inlet inside the recovery tank. This will help displace any remaining moisture and prevent corrosion of the vacuum components.
2. At the end of each day run clear water through the pump. Wipe out the solution tank using a clean cloth. Check the acorn screen filter for damage, and replace it if it becomes clogged, corroded or crushed. Never store tools or hoses inside the tanks of the machine, as damage to the components may occur.
3. Rinse out the recovery tank with clean water and clean the float cage screen assembly. This will eliminate odor problems inside the tank, as well as preventing damage to the vacuum system caused by faulty float operation.
4. Check that the recovery tank float ball is free of debris and operating properly. The float cage may be unscrewed from the mounting pipe for complete cleaning. Be sure to reassemble the float assembly properly.
5. To keep your E1710 extractor looking new, wipe the polyethylene housing with vinyl cleaner or protector as needed.

Always unplug power cord/s before opening access panel.

WARNING: Do not allow the machine to freeze. System damage from freezing can take place in as little as 5 minutes in sub-zero conditions. This will cause lines with water in them to crack and break. Heaters and pumps with water in them subject to freezing will also crack and break. Allowing the machine to freeze with water in the system and/or using improper chemicals will void the warranty.

SAFETY INFORMATION

1. Prior to inspection or repair of this machine, disconnect all electrical cords rendering the machine powerless. Failure to do so could result in serious or fatal injury.
2. Inspect unit daily for worn or damaged components. E.g. frayed cord, loose plug, or a plug with missing ground pin, etc.
3. This unit should only be operated when in an upright position on a level surface.
4. Do not operate unit unless it is properly grounded in a 3 pin grounded outlet. Never bend or remove ground pin from plug.
5. Ensure filters and screens are free from lint or dirt.
6. Do not run unit if vacuum motors or pump are wet. Allow sufficient time for motors to dry before plugging unit in.
7. Do not use solvent based cleaning products in this extractor.
8. Keep air inlets and exhaust ports free from obstructions. Blocked air inlets or exhaust ports can cause the unit to over heat.
9. Do not use solution or recovery tanks for storing hoses, cords or accessories.
10. When using electrical equipment around water it is important to wear rubber soled shoes and keep machine properly grounded at all times. Failure to do so could result in a fatal electric shock.

OPERATING INSTRUCTIONS

1. Insert electrical cords into 3 pin grounded outlets. Two cord machines are equipped with a circuit indicator located above the Switch Plate. The electrical cords must be plugged into separate circuits. When this is achieved the green light will illuminate showing the machine is ready for operation.
2. We recommend the use of a Esteam Liquid Defoamer, to prevent the machine from prematurely shutting off due to excess foam in the recovery tank. Turn on vacuum and pour approximately ¼ cup of Esteam Liquid Defoamer into the end of the vacuum hose.

NOTE: If the unit is equipped with a heater, two power cords are supplied. The machine will need to be plugged into two different circuits to handle the combined amperes. Your solution will be heated to approximately 200°F.

3. 100 PSI pump priming instructions: **Using Primer Quick Connect**

- Fill fresh water tank
- Attach vacuum and solution hose to machine
- Attach primer quick connect to end of solution hose
- Place solution hose with primer quick connect into open end of vacuum hose and hold
- turn vacuum and pump switches on
- Once a continuous flow of water is entering the vacuum hose, this indicates pump is primed
- Turn off vacuum and pump switches and disconnect primer quick connect
- Connect solution hose and vacuum hose to carpet wand
- Turn vacuum and pump switches on
- Machine is ready to use.

TO USE YOUR E1710 OPTIONAL HEATER:

- A) Hook the wand solution hose to the quick connect of your machine.
- B) Plug the heater power cord into a wall outlet that is on a separate circuit from the other cord.
- C) Turn the heater switch on.
- D) When the red light goes out, solution is heated and ready to use.

WARNING: If your heater does not work DO NOT attempt to repair it yourself, call your distributor for repair procedures. Using solvents in heaters can be hazardous and will void your warranty. Allowing heaters to freeze will crack the heater cartridge and will also void your warranty.

DANGER: No solvents of any type may be used in this system at any time. The use of solvents is extremely hazardous resulting in possible fire and/or explosion.

OPERATING INSTRUCTIONS (CONTINUED)

4. Connect the vacuum and solution hoses to the carpet cleaning wand.
5. Proceed to clean the carpets.
6. When the recovery tank becomes full, vacuum will automatically stop extracting. When the vacuum stops extracting it will make a distinctive high pitched noise as all air flow will be cut off. At this time switch the unit off. To empty the recovery tank use the black 45° elbow provided to direct waste water into a 20L bucket or toilet.

NOTE: Ensure that the automatic high water shut off screen inside the recovery tank is free from any obstructions. Be sure to close drain valve before resuming cleaning.

7. To empty the solution tank remove vacuum hose from wand. Turn on vacuum and extract solution from solution tank into recovery tank, then drain recovery tank.

NOTE: Do not completely submerge the end of the vacuum hose into the solution. Allow some air to enter the end of the vacuum hose with the liquid.

8. When the job is completed, empty and rinse out the solution and recovery tanks. Allow vacuum to run 3 to 5 minutes. This will eliminate all moisture from vacuum assuring long vacuum lift.

WARNING: When using electrical equipment around water it is important to wear rubber soled shoes and keep machine properly grounded at all times. Failure to do so could result in a fatal electric shock.

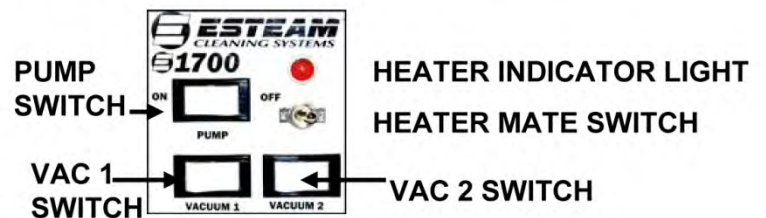
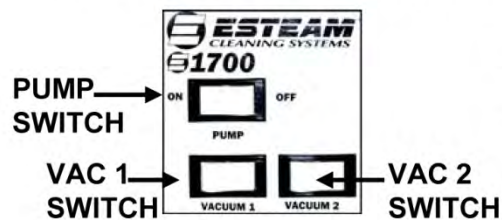
E1700 100 PSI MODEL



MODEL E1710 &

MODEL E1710 2-3 STAGE VAC

MODEL E1710 H.M



TROUBLESHOOTING

WARNING: Prior to inspection or repair of this machine, disconnect all electrical cords rendering the machine powerless. Failure to do so could result in serious or fatal injury.

PROBLEM	CAUSE	SOLUTION
1. Entire unit will not operate	1. Unit not plugged in	1. Connect unit to 3 prong outlet
	2. Blown fuse or breaker for plug in outlet	2. Check fuse panel for blown fuse
	3. Loose wiring	3. See dealer
2. Pump will not run	1. Switch not turned on	1. Turn on switch
	2. Kink in solution hose	2. Remove kink
	3. Plugged jet or quick connect	3. Remove blockage
	4. Broken switch	4. See dealer
	5. Loose wiring	5. See dealer
	6. Pump defective	6. See dealer
3. Vacuums will not run	1. Switch not turned on	1. Turn on switch
	2. Broken switch	2. See dealer
	3. Loose wiring	3. See dealer
	4. Blocked rotor	4. See dealer

TROUBLE SHOOTING (CONTINUED)

PROBLEM	CAUSE	SOLUTION
4. Pump runs but does not pump solution	1. Out of solution	1. Fill with solution
	2. Pump inlet screen plugged	2. Clean inlet screen
	3. Pump air locked	3. Press trigger to open valve on cleaning wand to relieve air
	4. Pump was not properly primed	4. Prime pump using priming hose
	5. Internal or external solution line damaged and leaking	5. See dealer
5. Pump runs but has loss of pressure	1. Partial kink in solution hose	1. Remove kink
	2. Jet orifice opening on cleaning wand is too large	2. Total jet opening for 100 PSI should be .03
	3. Internal pump components wearing out	3. See dealer

NOTE: Operation of pump using wand or hand tool with an orifice opening of less than .06 will cause pump to cavitate and could result in premature wear of pump components.

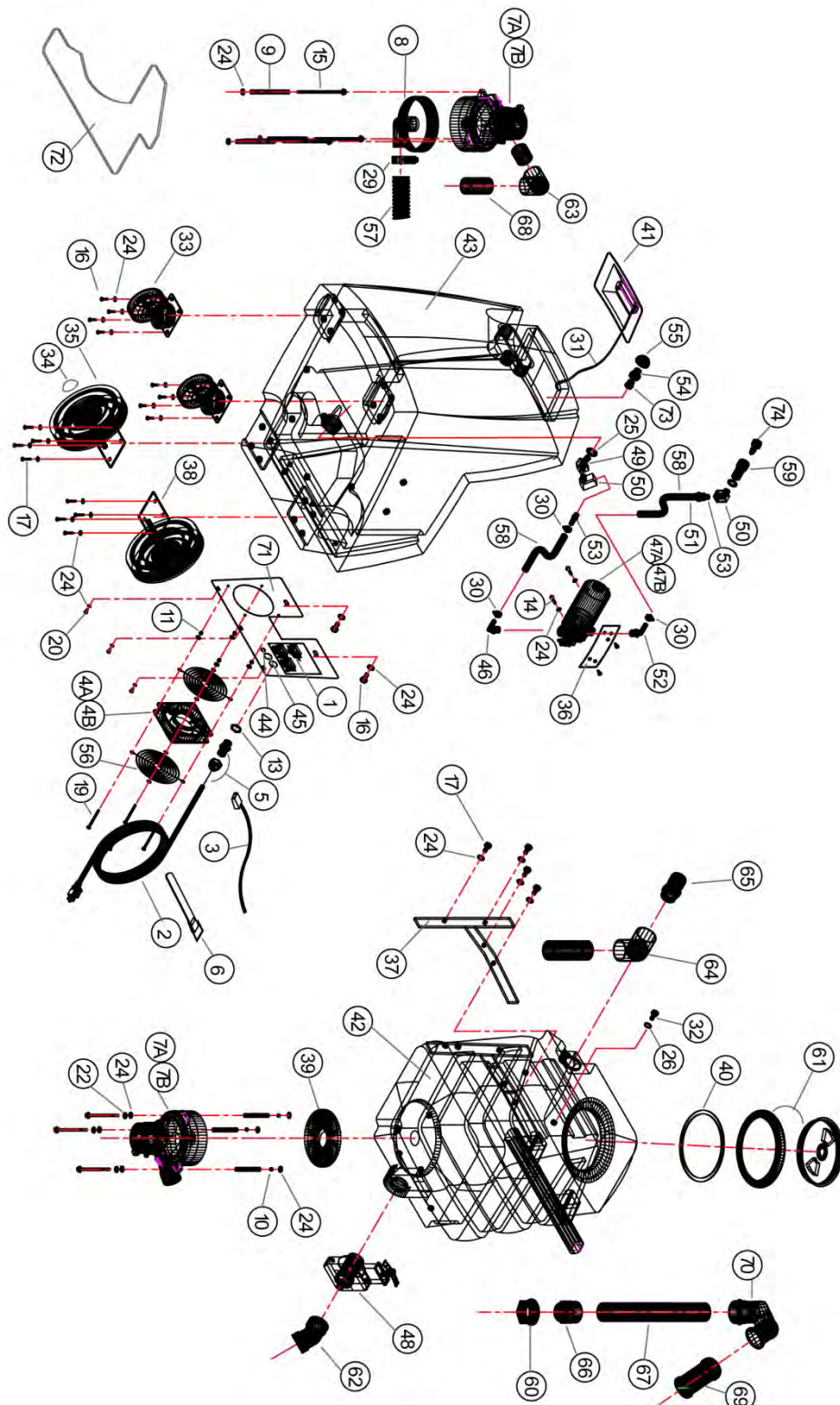
TROUBLESHOOTING (CONTINUED)

PROBLEM	CAUSE	SOLUTION
6. Vacuums operate but have poor or no suction	1. Recovery tank full	1. Drain recovery tank
	2. Vacuum hose plugged	2. Remove blockage
	3. Wand plugged	3. Remove blockage
	4. Exhaust port blocked	4. Remove blockage
	5. High level shut off float stuck in off position	5. Turn vacuum off and tap top of float screen cage
	6. Front drain valve left open after draining recovery tank	6. Close recovery tank drain valve on front of machine
7. Vacuums prematurely stops extracting	1. Excess foam in recovery tank	1. Add defoamer to recovery tank
	2. Lint or dirt on high level shut off float screen	2. Clean high level shut off float screen
	3. Defective float ball	3. Replace float screen cage
8. Machine spits water out of exhaust port	1. High level shut off float not working properly	1. Check high level shut off float cage and ball for proper operation
	2. Foam build up in recovery tank	2. Add defoamer to recovery tank

TROUBLESHOOTING (CONTINUED)

PROBLEM	CAUSE	SOLUTION
9. Machine blowing excessive amounts of water out of exhaust ports.	1. Damaged (leaking) recovery tank fittings	1. Immediately shut unit down. Bring unit to a dealer for service
10. Water accumulating in bottom of electrical component area	1. Inside solution line leaking	1. Immediately shut unit down. Bring unit to a dealer for service
	2. Pump leaking	2. Immediately shut unit down. Bring unit to a dealer for service
	3. Solution or recovery tank leaking from above	3. Immediately shut unit down. Bring unit to a dealer for service.

E1710



E1710 (110v & 220v)

REF	PART NO.	DESCRIPTION	NOTES:
1	305-230	Switch, Rocker 20 Amp	
2	315-015	Cord, 25' Black 14/3 SJTW-A	
3	315-040	Cord, Fan Muffin	
4A	333-005	Fan, Muffin 4" (110v)	E1710
4B	333-006	Fan, Muffin 4" (220v)	E1710-20
5	335-015	Strain Relief, 14 Gauge	
6	350-005	Strap Velcro	
7A	355-400	Vacuum, 2 Stg (110v)	E1710
7B	355-500	Vacuum, 2 Stg (220v)	E1710-20
8	355-405	Vac Cap Adapter	
9	355-225	Vac Spacer 3/8 x 2 1/2	
10	400-010	Hex Nut 1/4 x 20 Zinc	
11	400-130	Locknut, 10 x 24 Nylon SS	
12	400-148	Locknut, 4 x 40 Nylon SS	Not Shown
13	400-165	Locknut, 1/2"	
14	405-010	Bolt, 1/4 x 1 SS	
15	405-050	Bolt, 1/4 x 3 1/2 Stove Zinc	
16	405-615	CS, 1/4 x 1/2 SS (Hex HD)	
17	405-620	CS, 1/4 x 3/4 SS (Hex HD)	
18	410-125	SMS, 8 x 5/8 Pan Rob. S.S.	Not shown
19	410-175	MS, 10-24 x 2 1/2 Rob Zinc	
20	410-215	MS, 10-32 x 3/8 FT Phil SS	
21	410-225	SMS, 10 X 1/2 Pan Rob. Zinc	Not shown
22	415-020	LW, 1/4 Zinc	
23	415-105	FW, 6 SS	Not shown
24	415-125	FW, 1/4 SS	
25	415-156	FW, 1/2 SS	
26	415-305	FNDW, 1/4 SS	
27	420-015	Rivet, AL #48	Not shown
28	420-055	Rivet, AL/AL #46	Not shown
29	425-010	Clamp, #20 Hose 13/16 x 1 3/4	
30	425-115	Clamp, Hose Silicone	
31	430-010	Chain, 1/4 Brass	
32	435-040	Handle, Cross M	
33	455-075	Caster, 4" Swivel	
34	455-052	Wheel Cap Dome	
35	455-057	Wheel, 8" Grey/Black Hub	
36	465-050	BRKT, E1700 Pump	
37	465-080	Brace, D/B Tank	
38	470-016	Axel, D/B Set V2	
39	475-035	Gasket Vac 5 3/4	
40	475-125	Gasket 6" Access Cover Clear	
41	495-210	Lid, Solution Tank	
42	495-220	Rec Tank	

43	495-225	Sol Tank	
44	498-055	Plug, 1/2 Nylon	
45	498-065	Plug, 7/8 Button	
46	510-090	Shurflo Elbow, 90	
47A	511-100	Pump, 100 PSI, 112v	E1710
47B	511-300	Pump, 100 PSI, 220v	E1710-20
48	545-100	Dump Valve, 1 1/2"	
49	555-184	Elbow 45, Street 1/4	
50	555-208	Elbow 90, 1/4 Street Extruded	
51	555-254	Ferrule 3/8 Hose	
52	555-326	Hose Barb 90, 3/8 Barb x 3/8 MPT	
53	555-364	Hose Barb, 3/8 Barb x 1/4 MPT	
54	555-512	Reducing ADPT, 3/8 FPT x 1/4 MPT	
55	560-030	Screen, Acorn	
56	560-325	Guard, Finger 4" Fan	
57	570-010	Vac Hose 1 1/2" Wire Reinforced	
58	572-041	L.P. Hose 3/8"	
59	580-010	Q.C. 1/4" Fem (Closed)	
60	585-025	Spin Fitting 1 1/2	
61	585-210	Clear Cover, 6" C/W Ring	
62	588-020	ABS Elbow 45, 1 1/2 SLP x SLP	
63	590-010	PVC Elbow 1 1/4 90, S x S	
64	590-020	PVC ELB 1 1/2" 90, S x FIPT	
65	590-405	PVC Hose Barb 1 1/2" x MPT	
66	590-415	PVC Adpt 1 1/2", S x MPT	
67	595-005	ABS Pipe, 1 1/2"	
68	595-110	PVC Pipe, 1 1/4"	
69	597-010	Float Screen Cage	
70	597-061	Adpt (RM) 30 Degree	
71	845-045	Control Panel	
72	845-047	Plate Bottom	
73	555-024	Bushing 3/8 M x 1/4 F	
74	580-015	1/4 Quick Connect (For priming pump)	

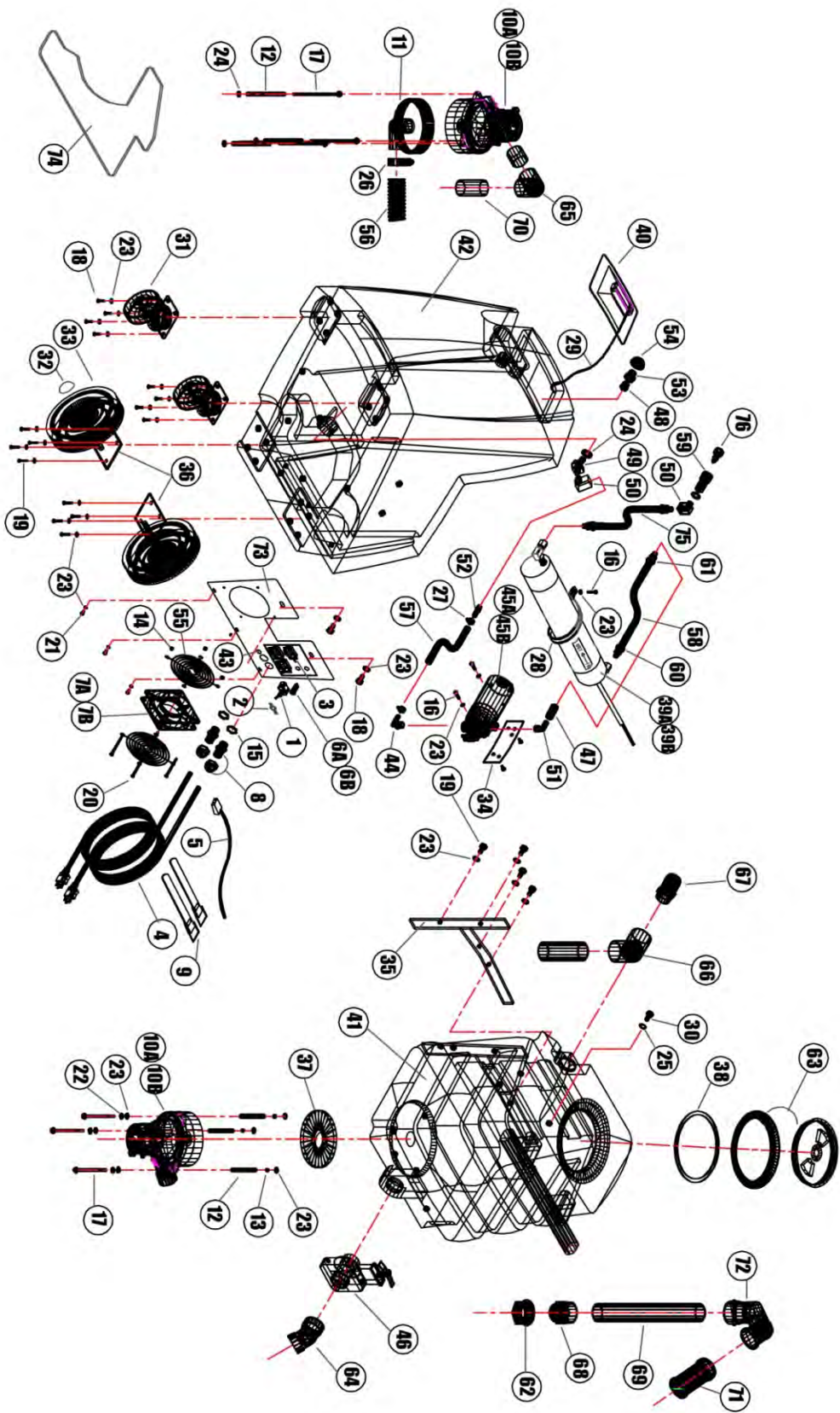
This exploded view diagram illustrates the assembly of a washing machine. The central component is the main body (1), which is surrounded by various parts including the door (2), the drum (3), the motor (4), the pump (5), the control panel (6), the detergent dispenser (7), the door seal (8), the door lock (9), the door hinge (10), the door handle (11), the door latch (12), the door strike (13), the door latch assembly (14), the door latch cable (15), the door latch bracket (16), the door latch roller (17), the door latch roller bracket (18), the door latch roller cable (19), the door latch roller bracket (20), the door latch roller cable (21), the door latch roller bracket (22), the door latch roller cable (23), the door latch roller bracket (24), the door latch roller cable (25), the door latch roller bracket (26), the door latch roller cable (27), the door latch roller bracket (28), the door latch roller cable (29), the door latch roller bracket (30), the door latch roller cable (31), the door latch roller bracket (32), the door latch roller cable (33), the door latch roller bracket (34), the door latch roller cable (35), the door latch roller bracket (36), the door latch roller cable (37), the door latch roller bracket (38), the door latch roller cable (39), the door latch roller bracket (40), the door latch roller cable (41), the door latch roller bracket (42), the door latch roller cable (43), the door latch roller bracket (44), the door latch roller cable (45), the door latch roller bracket (46), the door latch roller cable (47), the door latch roller bracket (48), the door latch roller cable (49), the door latch roller bracket (50), the door latch roller cable (51), the door latch roller bracket (52), the door latch roller cable (53), the door latch roller bracket (54), the door latch roller cable (55), the door latch roller bracket (56), the door latch roller cable (57), the door latch roller bracket (58), the door latch roller cable (59), the door latch roller bracket (60), the door latch roller cable (61), the door latch roller bracket (62), the door latch roller cable (63), the door latch roller bracket (64), the door latch roller cable (65), the door latch roller bracket (66), the door latch roller cable (67), the door latch roller bracket (68), the door latch roller cable (69), the door latch roller bracket (70), the door latch roller cable (71), the door latch roller bracket (72), the door latch roller cable (73), the door latch roller bracket (74), the door latch roller cable (75), the door latch roller bracket (76), the door latch roller cable (77), the door latch roller bracket (78), the door latch roller cable (79), the door latch roller bracket (80), the door latch roller cable (81), the door latch roller bracket (82), the door latch roller cable (83), the door latch roller bracket (84), the door latch roller cable (85), the door latch roller bracket (86), the door latch roller cable (87), the door latch roller bracket (88), the door latch roller cable (89), the door latch roller bracket (90), the door latch roller cable (91), the door latch roller bracket (92), the door latch roller cable (93), the door latch roller bracket (94), the door latch roller cable (95), the door latch roller bracket (96), the door latch roller cable (97), the door latch roller bracket (98), the door latch roller cable (99), the door latch roller bracket (100).

E1710 DUAL 3 STAGE VAC (110v & 220v)

REF	PART NO.	DESCRIPTION	NOTES:
1	305-230	Switch, Rocker 20 Amp	
2	315-015	Cord, 25' Black 14/3 SJTW-A	
3	315-040	Cord, Fan Muffin	
4A	333-005	Fan, Muffin 4" (110v)	E1710
4B	333-006	Fan, Muffin 4" (220v)	E1710-20
5	335-015	Strain Relief, 14 Gauge	
6	350-005	Strap Velcro	
7A	355-410	Vacuum, 3 Stg (110v)	E1710
7B	355-510	Vacuum, 3 Stg (220v)	E1710-20
8	355-405	Vacuum Cap Adapter	
9	355-219	Vac Spacer 5/16 x 3	
10	400-010	Hex Nut 1/4 x 20 Zinc	
11	400-130	Locknut, 10 x 24 Nylon SS	
12	400-165	Locknut, 1/2"	
13	405-010	Bolt, 1/4 x 1 SS	
14	405-060	Bolt, 1/4 x 4 Stove Zinc	
15	405-615	CS, 1/4 x 1/2 SS (Hex HD)	
16	405-620	CS, 1/4 x 3/4 SS (Hex HD)	
17	410-125	SMS, 8 x 5/8 Pan Rob. S.S.	Not shown
18	410-175	MS, 10-24 x 2 1/2 Rob Zinc	
19	410-215	MS, 10-32 x 3/8 FT Phil SS	
20	410-225	SMS, 10 X 1/2 Pan Rob. Zinc	Not shown
21	415-125	FW, 1/4 SS	
22	415-156	FW, 1/2 SS	
23	415-305	FNDW, 1/4 SS	
24	425-010	Clamp, #20 Hose 13/16 x 1 3/4	
25	425-115	Clamp, Hose Silicone	
26	430-010	Chain, 1/4 Brass	
27	435-040	Handle, Cross M	
28	455-075	Caster, 4" Swivel	
29	455-052	Wheel Cap Dome	
30	455-057	Wheel, 8" Grey/Black Hub	
31	465-050	BRKT, E1700 Pump	
32	465-080	Brace, D/B Tank	
33	470-016	Axel, D/B Set V2	
34	475-035	Gasket Vac 5 3/4	
35	475-125	Gasket 6" Access Cover Clear	
36	495-210	Lid, Solution Tank	
37	495-220	Recovery Tank	
38	495-225	Solution Tank	
39	498-055	Plug, 1/2 Nylon	
40	510-090	Shurflo Elbow, 90	
41A	511-100	Pump, 100 PSI, 112v	E1710
41B	511-300	Pump, 100 PSI, 220v	E1710-20

42	545-100	Dump Valve, 1 1/2"	
43	555-024	Bushing 3/8 M x 1/4 F	
44	555-184	Elbow 45, Street 1/4	
45	555-208	Elbow 90, 1/4 Street Extruded	
46	555-364	Hose Barb, 3/8 Barb x 1/4 MPT	
47	555-512	Reducing ADPT, 3/8 FPT x 1/4 MPT	
48	560-030	Screen, Acorn	
49	560-330	Guard, Finger 6" Fan	
50	570-010	Vac Hose 1 1/2" Wire Reinforced	
51	572-041	L.P. Hose 3/8"	
52	580-010	Q.C. 1/4" Fem (Closed)	
53	585-025	Spin Fitting 1 1/2	
54	585-210	Clear Cover, 6" C/W Ring	
55	588-020	ABS Elbow 45, 1 1/2 SLP x SLP	
56	590-010	PVC Elbow 1 1/4 90, S x S	
57	590-020	PVC ELB 1 1/2" 90, S x FIPT	
58	590-405	PVC Hose Barb 1 1/2" x MPT	
59	590-415	PVC Adpt 1 1/2", S x MPT	
60	595-005	ABS Pipe, 1 1/2"	
61	595-110	PVC Pipe, 1 1/4"	
62	597-010	Float Screen Cage	
63	597-061	Adpt (RM) 30 Degree	
64	845-045	Control Panel	
65	845-047	Plate Bottom	
66	555-326	Hose Barb 90, 3/8 Barb x 3/8 MPT	
67	415-020	LW, 1/4 Zinc	
68	420-015	Rivet, AL #48	Not shown
69	580-015	1/4 Quick Connect (For priming pump)	

E1710 HEATER MATE

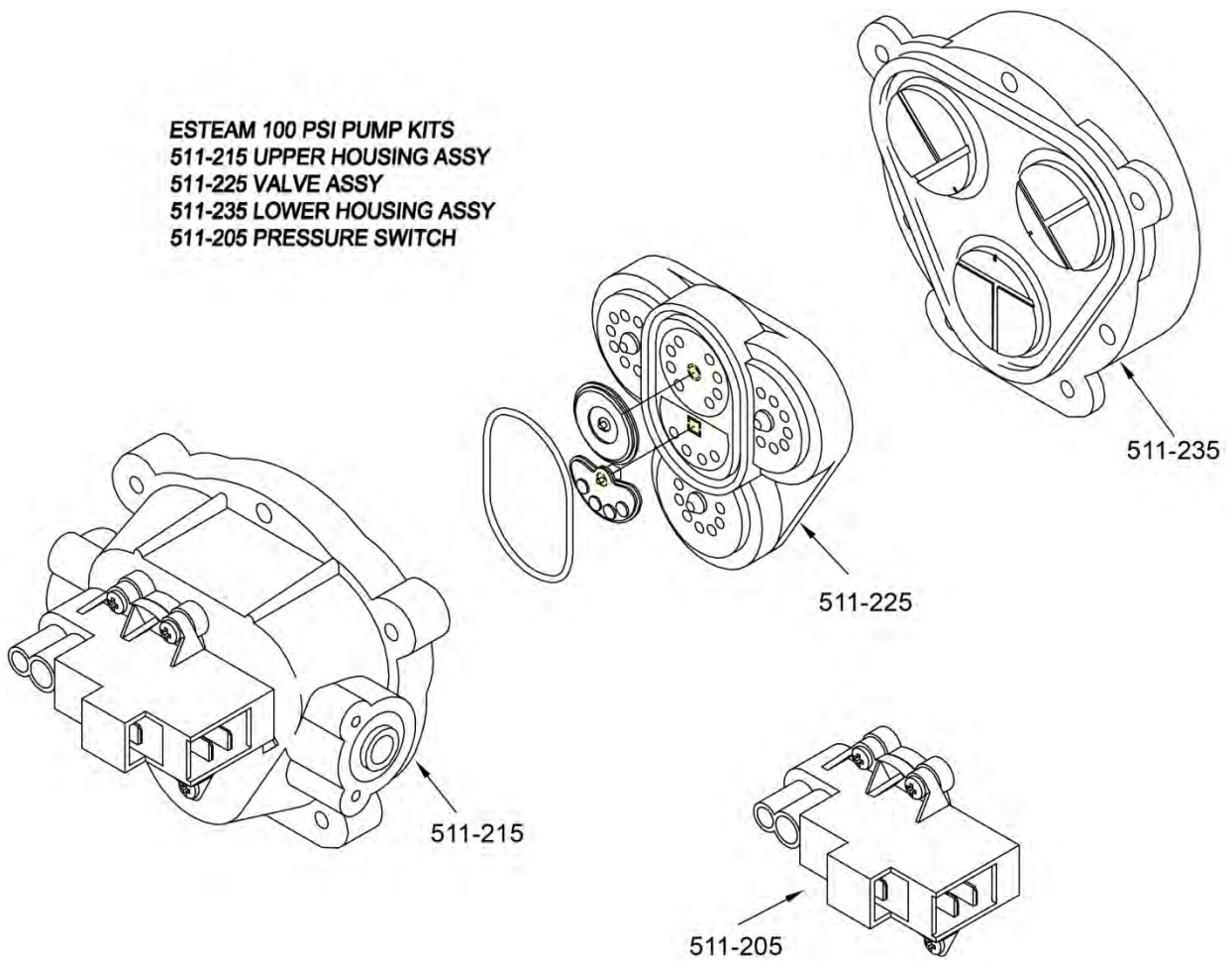


E1710 H.M (110v & 220v)

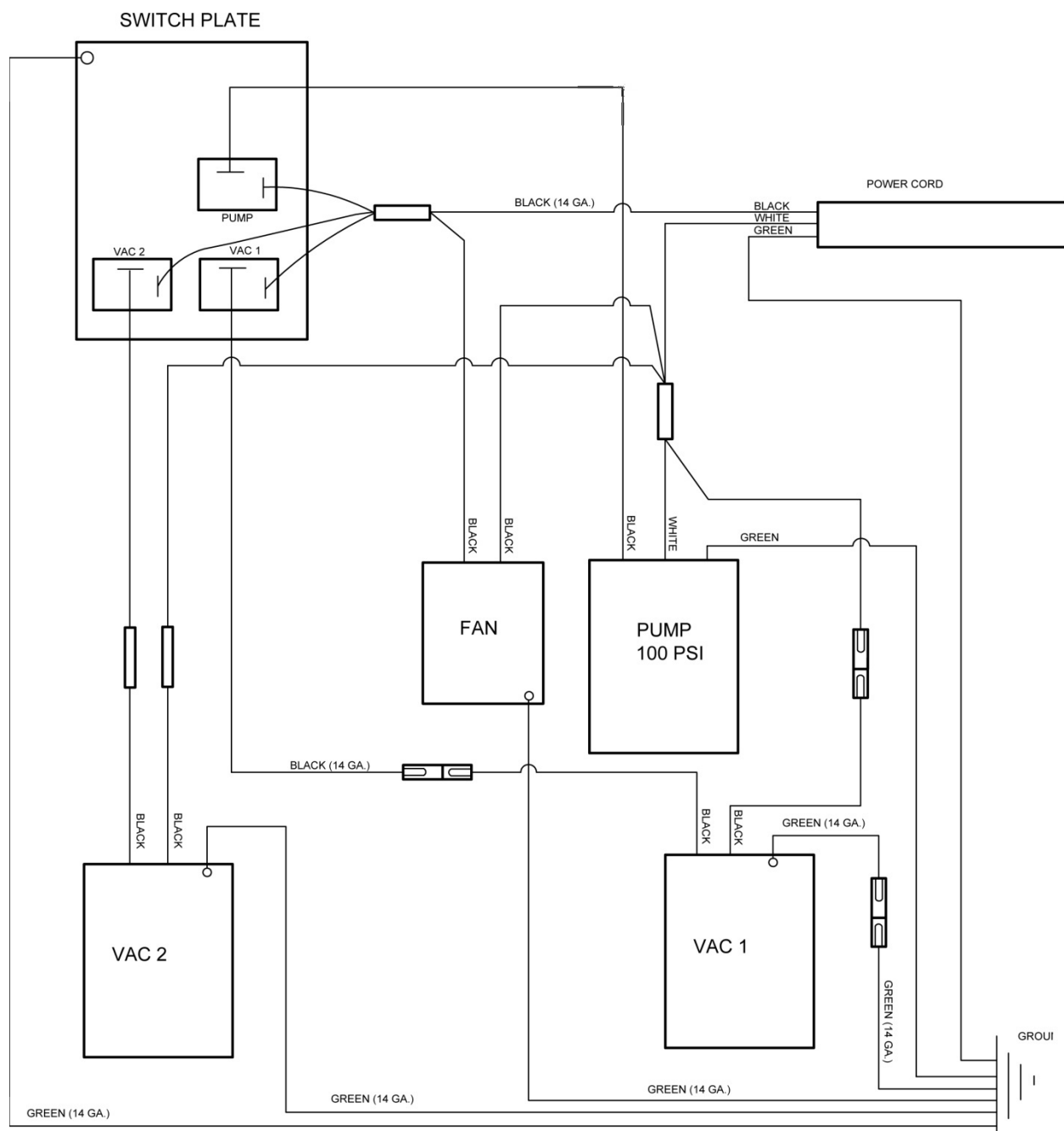
REF	PART NO.	DESCRIPTION	NOTES:
1	305-210	Toggle Switch	
2	305-225	Switch Plate, ON-OFF	
3	305-230	Switch, Rocker 20 Amp	
4	315-015	Cord, 25' Black 14/3 SJTW-A	
5	315-040	Cord, Fan Muffin	
6A	320-110	Lamp, Panel (110v)	E1710-10
6B	320-900	Lamp, Panel (220v)	E1710-20-10
7A	333-005	Fan, Muffin 4" (110v)	E1710-10
7B	333-006	Fan, Muffin 4" (220v)	E1710-20-10
8	335-015	Strain Relief, 14 Gauge	
9	350-005	Strap Velcro	
10A	355-400	Vacuum, 2 Stg (110v)	E1710-10
10B	355-500	Vacuum, 2 Stg (220v)	E1710-20-10
11	355-405	Vacuum Cap w/ Adapter	
12	355-225	Vac Spacer 3/8 x 2 1/2	
13	400-010	Hex Nut 1/4 x 20 Zinc	
14	400-130	Locknut, 10 x 24 Nylon SS	
15	400-165	Locknut, 1/2"	
16	405-010	Bolt, 1/4 x 1 SS	
17	405-056	Bolt, 1/4 x 4 Stove Zinc	
18	405-615	CS, 1/4 x 1/2 SS (Hex HD)	
19	405-620	CS, 1/4 x 3/4 SS (Hex HD)	
20	410-175	MS, 10-24 x 2 1/2 Rob Zinc	
21	410-215	MS, 10-32 x 3/8 FT Phil SS	
22	415-020	LW, 1/4 Zinc	
23	415-125	FW, 1/4 SS	
24	415-156	FW, 1/2 SS	
25	415-305	FNDW, 1/4 SS	
26	425-010	Clamp, #20 Hose 13/16 x 1 3/4	
27	425-115	Clamp, Hose Silicone	
28	425-130	Clamp, Tube 3"	
29	430-010	Chain, 1/4 Brass	
30	435-040	Handle, Cross M	
31	455-075	Caster, 4" Swivel	
32	455-052	Wheel Cap Dome	
33	455-057	Wheel, 8" Grey/Black Hub	
34	465-050	BRKT, E1700 Pump	
35	465-080	Brace, D/B Tank	
36	470-016	Axel, D/B Set V2	
37	475-035	Gasket Vac 5 3/4	
38	475-125	Gasket 6" Access Cover Clear	
39A	490-005	Foamed Casing, Round 1850W (110v)	E1710-10
39B	490-006	Foamed Casing, Round 1850W (220v)	E1710-20-10
40	495-210	Lid, Solution Tank	

41	495-220	Recovery Tank	
42	495-225	Solution Tank	
43	498-055	Plug, 1/2 Nylon	
44	510-090	Shurflo Elbow, 90	
45A	510-100	Pump, 100 PSI, 112v	E1710-10
45B	510-300	Pump, 100 PSI, 220v	E1710-20-10
46	545-100	Dump Valve, 1 1/2"	
47	550-035	Check Valve 1/4	
48	555-024	Bushing 3/8 M x 1/4 F	
49	555-184	Elbow 45, Street 1/4	
50	555-208	Elbow 90, 1/4 Street Extruded	
51	555-210	Elbow 90, 3/8 MPT x 1/4 MPT	
52	555-364	Hose Barb, 3/8 Barb x 1/4 MPT	
53	555-512	Reducing ADPT, 3/8 FPT x 1/4 MPT	
54	560-030	Screen, Acorn	
55	560-330	Guard, Finger 6" Fan	
56	570-010	Vac Hose 1 1/2" Wire Reinforced	
57	572-041	L.P. Hose 3/8	
58	572-125	Pulse Hose, 3/8	
59	580-010	Q.C. 1/4" Fem (Closed)	
60	581-060	Crimp Ftng, 3/8 Pulse Hose 1/4 MPT	
61	581-065	Crimp Ftng, 3/8 Pulse Hose 1/4 MPT SVL	
62	585-025	Spin Fitting 1 1/2	
63	585-210	Clear Cover, 6" C/W Ring	
64	588-020	ABS Elbow 45, 1 1/2 SLP x SLP	
65	590-010	PVC Elbow 1 1/4 90, S x S	
66	590-020	PVC ELB 1 1/2" 90, S x FIPT	
67	590-405	PVC Hose Barb 1 1/2" x MPT	
68	590-415	PVC Adpt 1 1/2", S x MPT	
69	595-005	ABS Pipe, 1 1/2"	
70	595-110	PVC Pipe, 1 1/4"	
71	597-010	Float Screen Cage	
72	597-061	Adpt (RM) 30 Degree	
73	845-045	Control Panel	
74	845-047	Plate Bottom	
75	263-013	HP Hose 28"	
76	580-015	1/4 Quick Connect (For priming pump)	

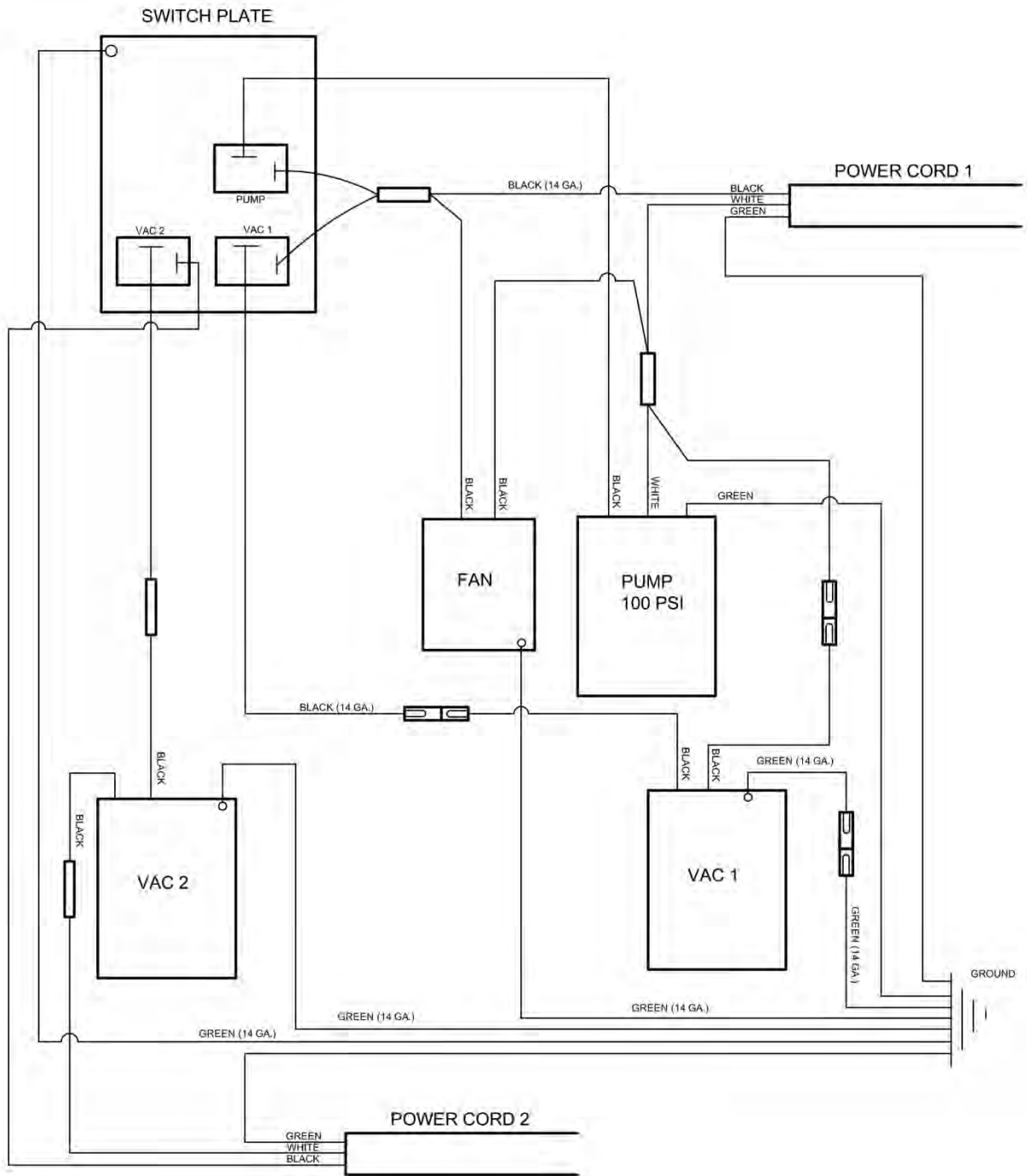
ESTEAM 100 PSI PUMP KITS
511-215 UPPER HOUSING ASSY
511-225 VALVE ASSY
511-235 LOWER HOUSING ASSY
511-205 PRESSURE SWITCH



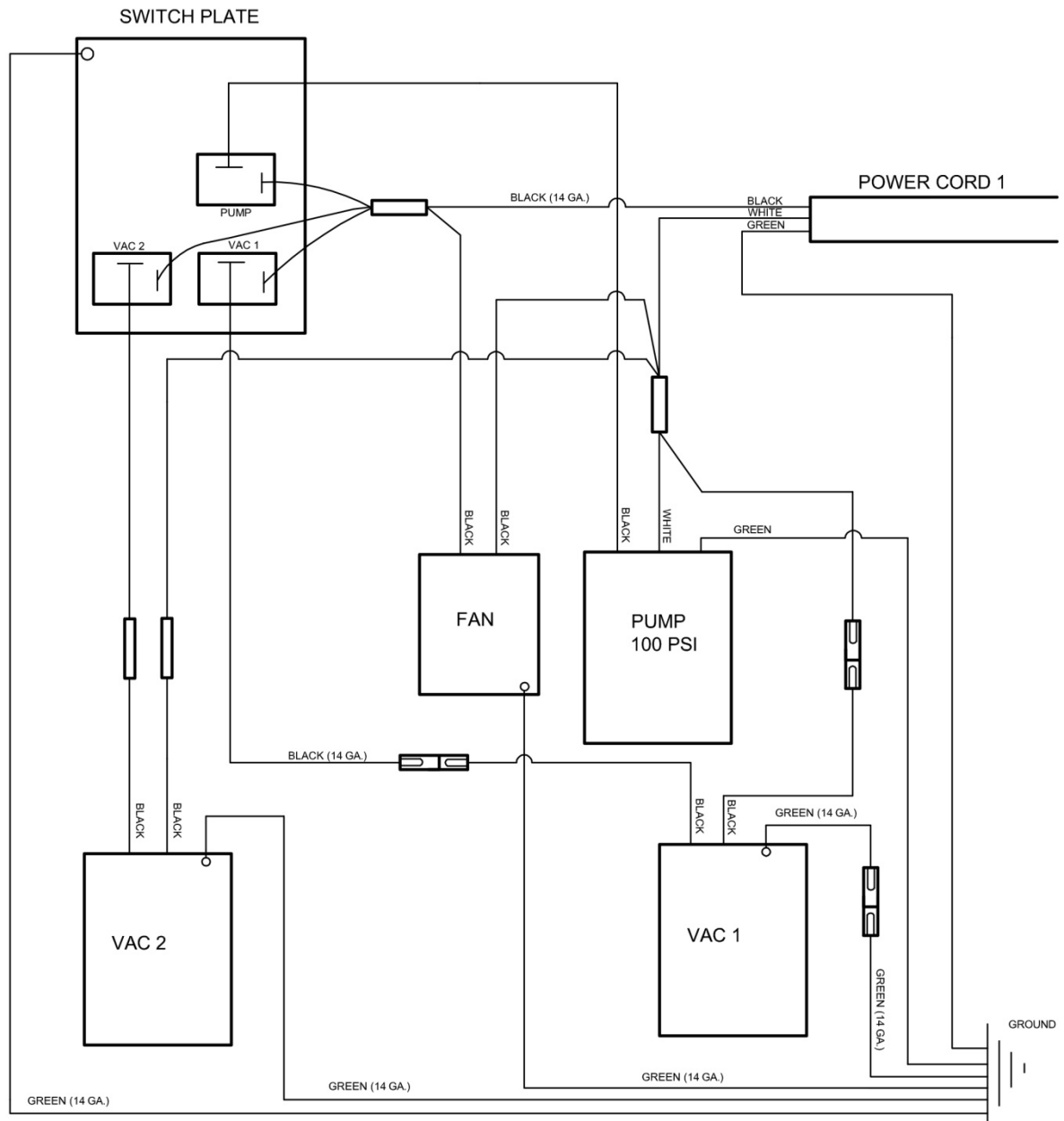
E1710 WIRING



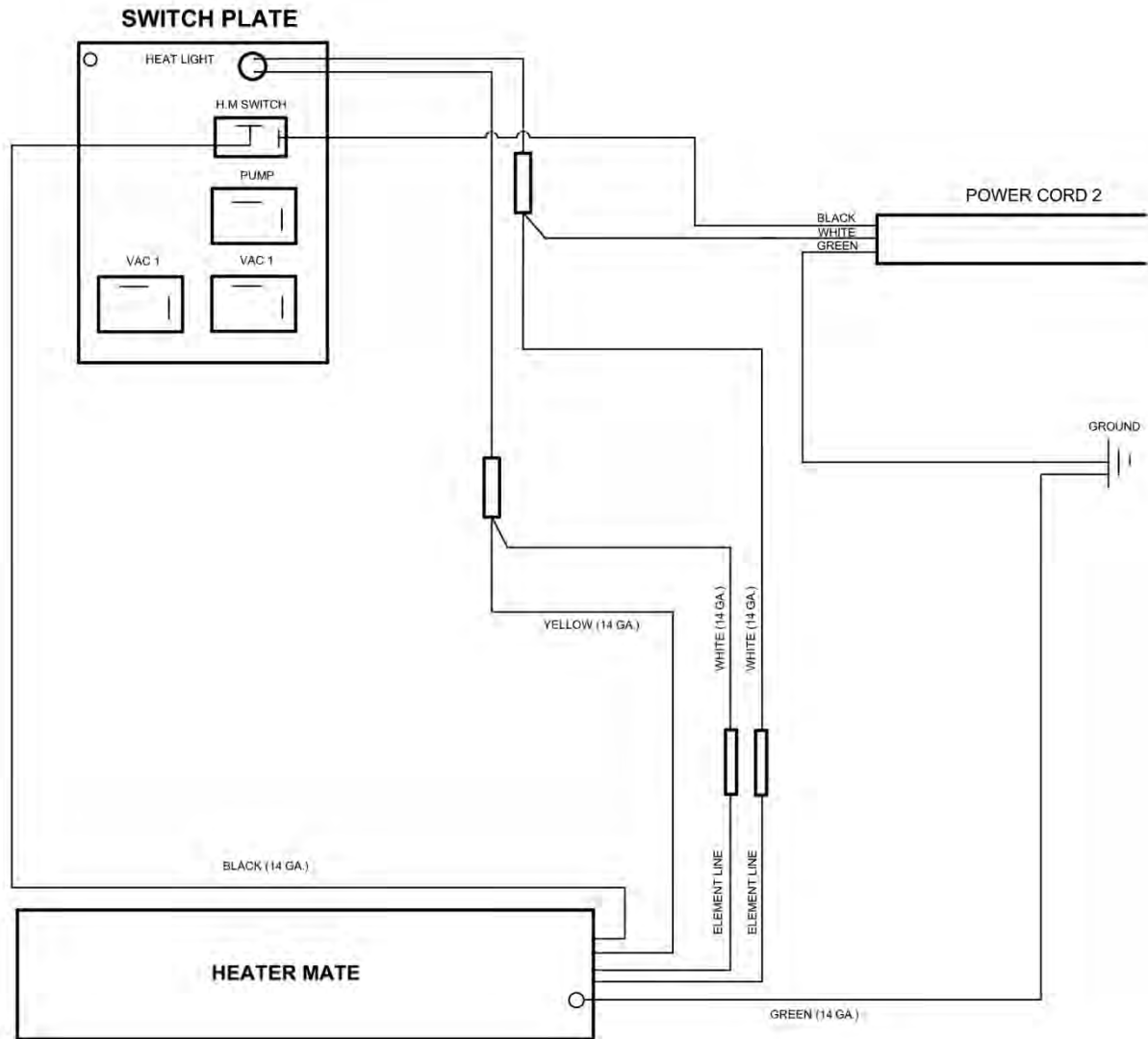
E1710 DUAL 3 STAGE VAC WIRING



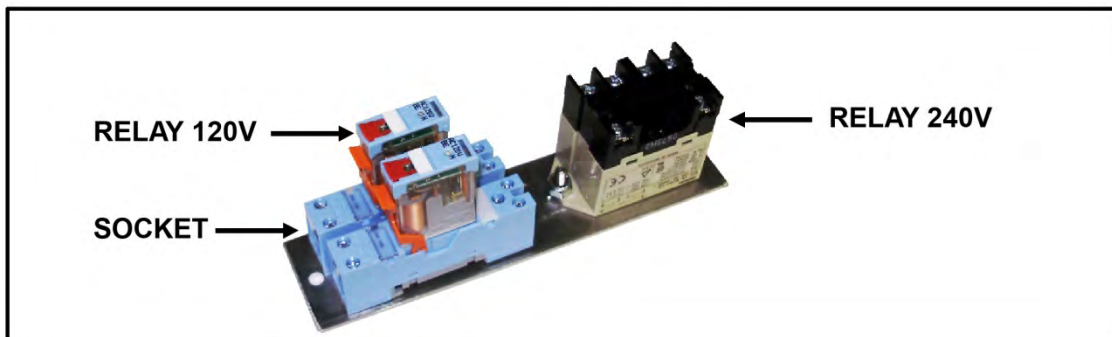
E1710 HEATER MATE WIRING P. 1



E1710 HEATER MATE WIRING P. 2



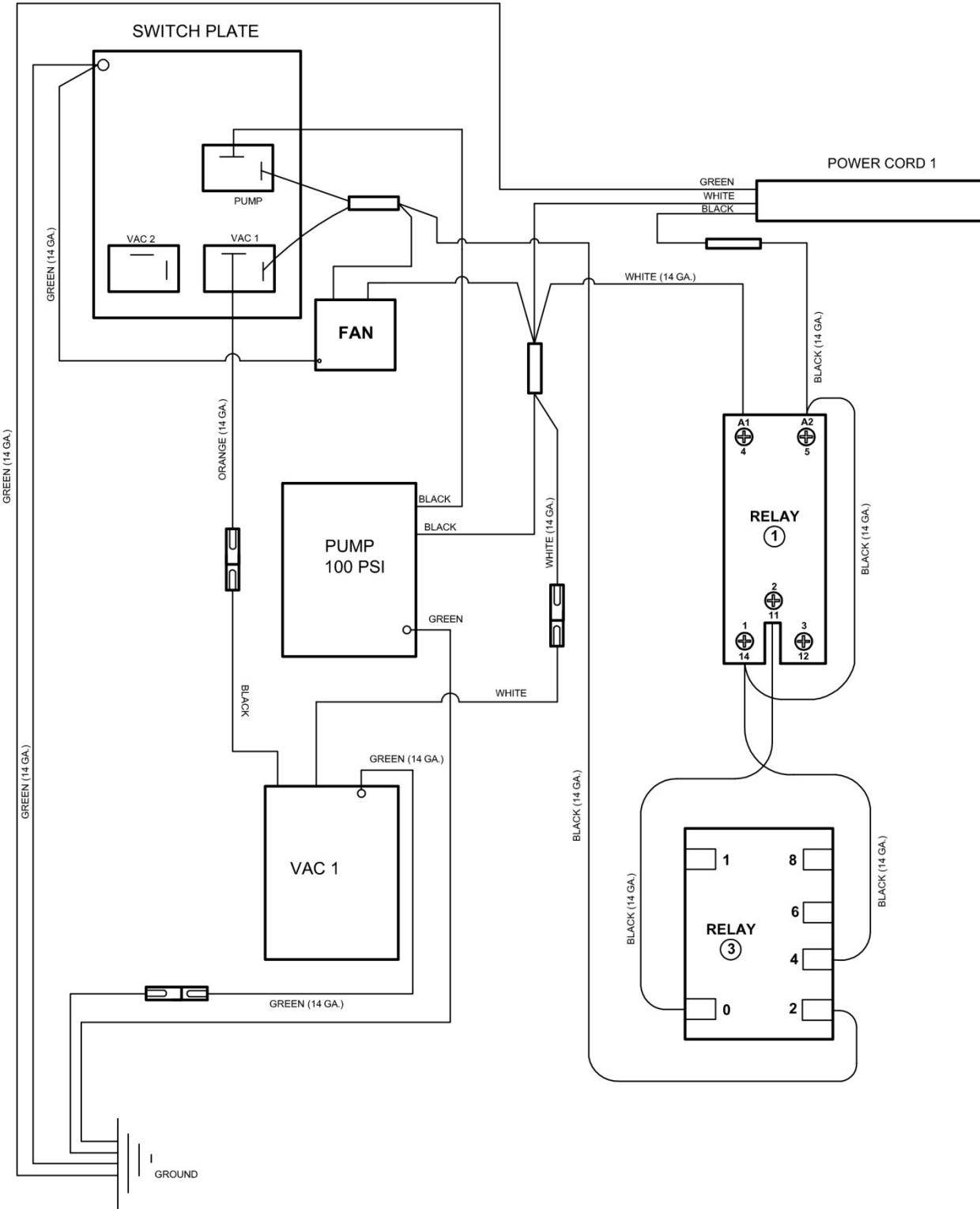
**E1710 MODEL W/ OPTIONAL CIRCUIT
INDICATOR**



CIRCUIT INDICATOR PARTS LIST

REF	PART NO.	DESCRIPTION	NOTES:
1	845-036	Plate	
2	320-111	Lamp	
3	305-057	Relay 120V	
4	305-058	Socket	
5	305-059	Relay 240V	
6	703-108	Decal	
7	465-045	Relay Bracket	

E1710 2-3 STAGE VAC W/ OPTIONAL CIRCUIT INDICATOR WIRING
PAGE 1



The diagram illustrates a control system for a pump and two vacuum chambers (VAC 1 and VAC 2) using three relays (RELAY 1, RELAY 2, RELAY 3). The system is powered by a power source labeled "POWER CORD 2".

Power Source and Grounding: The power source provides GREEN, WHITE, and BLACK wires. A GROUND connection is shown at the top.

Switch Plate: The switch plate controls the pump and VAC 1. It includes a PUMP switch and two vacuum chamber switches (VAC 1 and VAC 2). The switch plate is connected to the power source via GREEN (14 GA.), WHITE (14 GA.), and BLACK (14 GA.) wires.

Relay 1: RELAY 1 controls VAC 2. It has terminals 1, 2, 3, 4, 5, 6, 7, 8, 9, 10, 11, 12, 13, 14. The relay is connected to the power source via RED (14 GA.) and WHITE (14 GA.) wires.

Relay 2: RELAY 2 controls RELAY 3. It has terminals 1, 2, 3, 4, 5, 6, 7, 8, 9, 10, 11, 12, 13, 14. The relay is connected to the power source via RED (14 GA.) and WHITE (14 GA.) wires.

Relay 3: RELAY 3 controls the pump. It has terminals 1, 2, 3, 4, 5, 6, 7, 8, 9, 10, 11, 12, 13, 14. The relay is connected to the power source via RED (14 GA.) and WHITE (14 GA.) wires.

Wiring Details:

- GREEN (14 GA.) wire connects the power source to the switch plate.
- WHITE (14 GA.) wire connects the power source to the switch plate.
- BLACK (14 GA.) wire connects the power source to the switch plate.
- RED (14 GA.) wire connects the power source to RELAY 1.
- WHITE (14 GA.) wire connects the power source to RELAY 1.
- RED (14 GA.) wire connects the power source to RELAY 2.
- WHITE (14 GA.) wire connects the power source to RELAY 2.
- RED (14 GA.) wire connects the power source to RELAY 3.
- WHITE (14 GA.) wire connects the power source to RELAY 3.

The diagram illustrates the electrical wiring for a vacuum pump system. Key components include:

- SWITCH PLATE:** Contains two vacuum switches labeled VAC 1 and VAC 2, and a pump control switch.
- FAN:** A component connected to the main power distribution bus.
- PUMP 100 PSI:** The central vacuum pump unit.
- RELAY ①:** A relay with terminals A1 (4), A2 (5), 1 (14), 2 (11), and 3 (12).
- RELAY ③:** A relay with terminals 1, 8, 6, 4, 0, and 2.

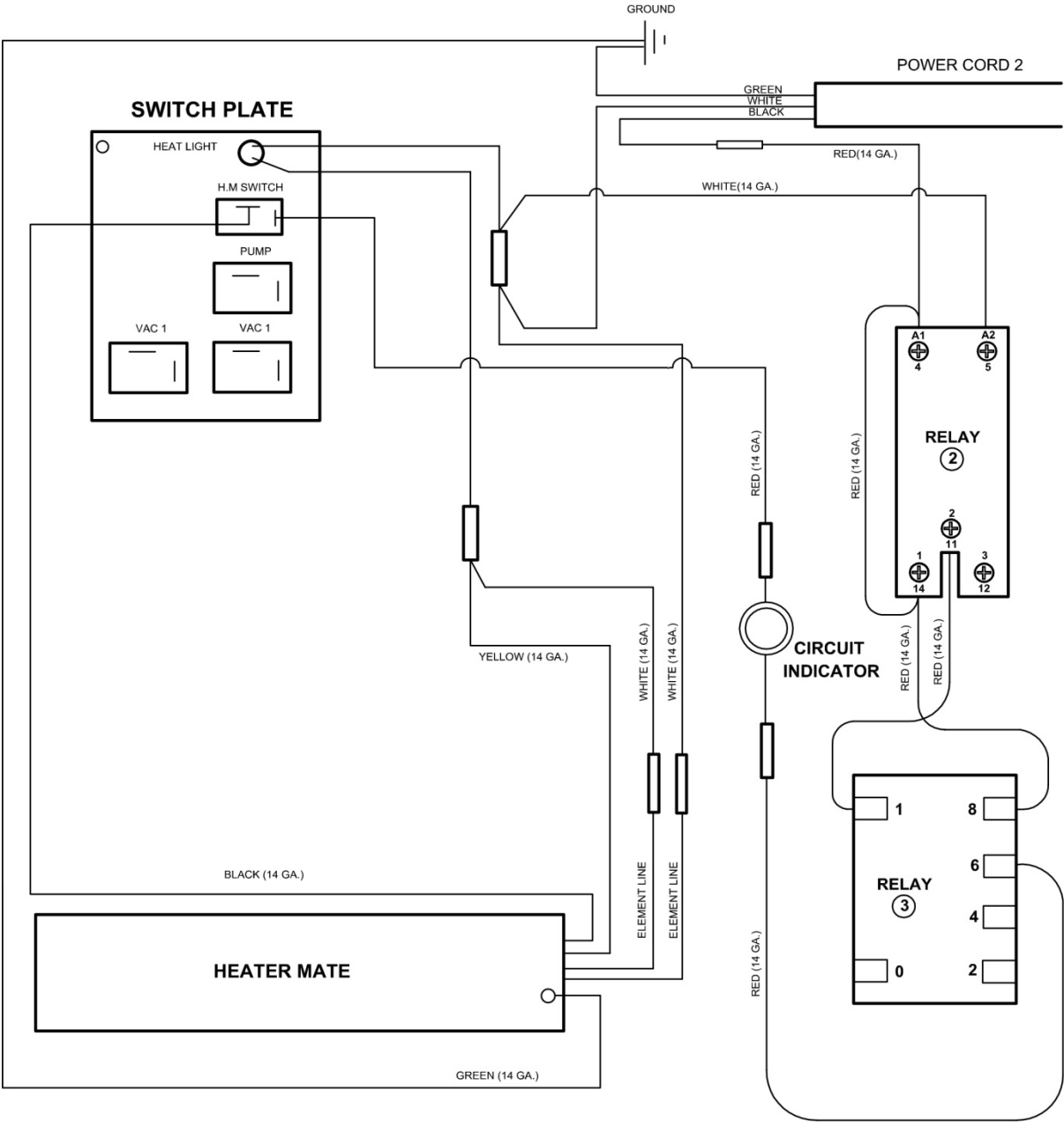
Power Sources and Grounding:

- POWER CORD 1:** Provides GREEN, WHITE, and BLACK wires.
- GROUND:** Indicated by three parallel lines at the bottom left.

Wiring Details:

- Green Wires (14 GA.):** Connect the ground terminal of the switch plate to the ground bus. They also connect from the top of VAC 1 and VAC 2 to their respective ground points.
- White Wires (14 GA.):** Connect the white wire from POWER CORD 1 to the main power distribution bus. Another white wire connects the pump's green terminal to the same bus.
- Black Wires (14 GA.):** Multiple black wires connect various components (switch plate, fan, pump, relays) to the main power distribution bus and to specific relay terminals.

E1710 HEATER MATE W/ OPTIONAL CIRCUIT INDICATOR WIRING
PAGE 2





WARRANTY REGISTRATION / DELIVERY ACCEPTANCE

This form must be completed and returned to Esteam Cleaning Systems to activate your warranty.

Esteam would like to take this opportunity to point out a few operating and safety recommendations for your consideration.

* All units cords have a ground plug pin for your safety, never remove or operate any equipment if the ground pin on the plug has been removed.

* Defoamer is to be used in all machines. Improper use of chemicals will void warranty. Drycleaning solvents cannot be used in any Esteam extractors.

* Do not over fill recovery tanks as this will damage the vacuum motors. Vacuum motors showing any signs of moisture contamination will not be covered under warranty.

Model # _____ Serial # _____

Name: _____

Address: _____

City: _____ Province/State: _____

Postal Code/Zip: _____ Date of Purchase: _____
Month / Day / Year

Purchased From: _____

By signing this form I _____, accept the terms and conditions of the warranty.
(print)

I have been fully instructed in the safe operation and use of this equipment.

Signed: _____ Date: _____

Mail Warranty Registration / Delivery Acceptance to:

Esteam Manufacturing Ltd.
3750-19th Street NE
Calgary, Alberta, Canada
T2E 6V2

Or Fax to:
(403) 291 - 0546

ESTEAM® CLEANING SYSTEMS

E-Series Extractor Warranty

E1700, E1000, E600, E250

NOTICE: REVIEW THIS WARRANTY CAREFULLY AS THIS DOCUMENT CONTAINS LIMITATIONS AND EXCLUSIONS.

PART I:

Esteam Manufacturing Ltd. (hereinafter referred to as "Esteam") warrants each new E-Series Extractor, subject to the limitations as defined in the specific details of its warranty coverage defined below.

LIMITED LIFETIME HOUSING WARRANTY COVERAGE:

Esteam warrants the E-Series Polyethylene Machine Housing Unit to be free from defects in material and workmanship (including cracking, leaking or deterioration) for the life of the unit, expressly subject to the limitations stated herein.

In the event a defect occurs in a E-Series Housing Unit within five years of receipt by the original customer, Esteam will, if satisfied on its examination that the failure is due to defective material or workmanship, repair or replace the E-Series Housing Unit, at no cost to the original customer, other than as maybe provided for in this warranty.

In the event a defect occurs in a E-Series Housing Unit subsequent to five years (and thereafter for life) of receipt by the original customer; Esteam will, if satisfied on its examination, that the failure is due to defective material or workmanship, provide to the original customer only, a new Housing Unit, at 50% of the then published retail pricing basis, used by Esteam.

90 DAY LIMITED WARRANTY COVERAGE:

Esteam warrants all switches, vacuum hoses and solution hoses, heatermate thermostats and thermo cut-outs to be free from defects in material and workmanship, for any defect occurring within 90 days of receipt by the original customer of the E-Series Extractor; and further subject to the limitations stated below. 90 day on labor, subject to Esteam's approval; hourly labor credit is set by Esteam.

12 MONTH WARRANTY COVERAGE:

Subject to the Limited Lifetime Warranty and the 90 Day Limited Warranty; Esteam warrants all remaining items on the E-Series Extractor to be free from defect in material or workmanship (excluding any labor charges) for a period of 12 months from date of receipt of the unit by the original customer; and further subject to the limitations stated below.

PART II - REPLACEMENT PARTS (UNDER WARRANTY)

Replacement warranty parts will be genuine Esteam parts, or parts of similar kind and quality.

All replacement warranty parts are warranted to be free from defects in materials or workmanship from the date of the original unit purchase for the balance of the original warranty period namely: 90 days, 12 months, or the Lifetime, whichever is applicable; all in accordance with the terms of Part I, of this warranty.

PART III - LIMITATIONS ON WARRANTY COVERAGE

WHAT IS NOT COVERED:

Notwithstanding any other term or covenant of Esteam contained herein, the following provisions shall apply:

- (i) No warranty is provided for any Esteam product which has failed as a result of freezing, fire, misuse, alteration, improper amps or voltage, accidental damage, improper maintenance, unauthorized repairs, alterations, abuse, neglect or operation of a Esteam product not expressly recommended or contemplated by Esteam; and
- (ii) No warranty is provided for mechanical or electrical breakdown caused by scale, hard water buildup, improper use of chemicals or resins, damage due to environmental conditions, and acts of God, or other events beyond the control of Esteam; and
- (iii) No warranty is provided for mechanical or electrical breakdown or failure of an Esteam product resulting from ordinary wear and tear, or the consequences thereof; including but not limited to the gradual reduction of the operating performance of the product. The determination of what is or is not ordinary wear and tear is at the sole discretion of Esteam; and
- (iv) No warranty is provided for damage caused by the failure of non-warranted parts and/or accessories, even if warranted parts are damaged as a result of the failure of a non-warranted part; and
- (v) No warranty is provided for damage resulting from failure by the customer to maintain scheduled maintenance requirements. The Esteam system has many parts which must either be replaced or checked for wear on a regular basis; including but not limited to replacement filters and lubricants. This system requires regular maintenance, service and attention by the customer; and
- (vi) No warranty is provided as to any extra expenses incurred by the customer, including but not limited to economic, incidental, consequential loss or damage (e.g. all labour charges, rental equipment, down time, lodging, commercial or business loss of any nature or kind due to product failure); whether direct or indirect, exemplary or punitive damage or loss, and whether in contract, tort or otherwise; and

- (vii) No warranty is provided as to failure of any cosmetic item or finish, labeling, silk screening, decals, paint, trim or other similar decorative items.
- (viii) Brass, rubber and synthetic rubber parts (e.g. "O" rings, diaphragms, gaskets, seals, grommets) are considered expendable in normal use, and are therefore not included in any warranty by Esteam.

PART IV - EXCLUSION OF LIABILITY

Esteam makes no warranties or representations, either expressed or implied, oral or written, in fact, or by operation of law, or otherwise, except as expressly stated herein as to the 90 day Limited, 12 month and Lifetime Extended warranties. Esteam, its officers, directors, agents, dealers and its affiliates (and their respective officers, directors, agents and dealers) shall not be liable to the customer nor to any party for any liability, including without limitation, strict liability, liability for loss, injury or damage due directly or indirectly to the use or operation of the Esteam product; consequential, exemplary and/or punitive damage or loss, whether in contract, tort, or otherwise.

PART V - RETURN GUIDELINES

Defective items must be replaced through a local Esteam Distributor. Replacement parts will be sent via prepaid regular ground service to the distributor. The defective part must be returned F.O.B. factory within 30 days including a letter providing the machine's serial number, date of purchase, material return authorization number, and customer name. If applicable, credit will be issued after the item has been evaluated by Esteam. Failure to comply with return policy will void the warranty on that item.

PART VI - CREDIT POLICY

All customers purchasing parts through an Esteam distributor must arrange credit directly with that distributor.

PART VII - OUTSIDE SOURCE WARRANTY REPAIRS

At the sole discretion of Esteam, it may be necessary to perform warranty/repairs at an outside source. An estimate must be submitted to and approved by Esteam prior to work being performed. Failure to do so will result in denial of your warranty claim.

PART VIII - TRANSFERABILITY

This warranty is not transferable to any subsequent owner.

PART IX - NOTICE - CUSTOMER OBLIGATIONS

- (i) Your responsibility as a customer includes but is not limited to cleaning, lubricating, seasonal maintenance (e.g. winterizing), replacement of worn parts and all regular scheduled or unscheduled maintenance.
- (ii) Any claim for warranty must be presented to Esteam or its authorized dealer, prior to the expiration of the time limitations specified and not thereafter, otherwise any warranty is void.
- (iii) Notwithstanding the generality of the foregoing customer obligations, Esteam does hereby bring to the attention of the customer, these specific maintenance operating requirements of the E-Series Extractor to validate its warranty:

(a) **Chemical Warning:**

Any improper use of chemicals shall void any Esteam warranty and thusly exclude any liability by Esteam. No dry cleaning chemical may be used in a E-Series Extractor; - as any such use may result in fire or pump/motor damage. A defoamer solution must be used by customer to limit foaming in the recovery tank.

(b) **Vacuum Motors:**

Require use of a defoamer. A vacuum motor showing moisture contamination on interior components shall void any warranty by Esteam.

(c) **Pumps:**

All pumps require daily flushing with clean water after use.

(d) **Internal Heatermate:**

The internal heater must be flushed with clean water after every use. Any build up of hard water deposits or chemical build up within the internal heater will void any Esteam warranty thusly exclude any liability of Esteam.

The foregoing constitutes Esteam's entire warranty and no other warranty, liability, contingency or responsibility, direct, indirect, consequential or in any other way connected with the sale or operation of Esteam machines or chemical product is expressed or implied.

**E-Series Extractor Warranty
Esteam Manufacturing Ltd. 3750-19th Street NE
Calgary, AB T2E 6V2 1-800-653-8338**