

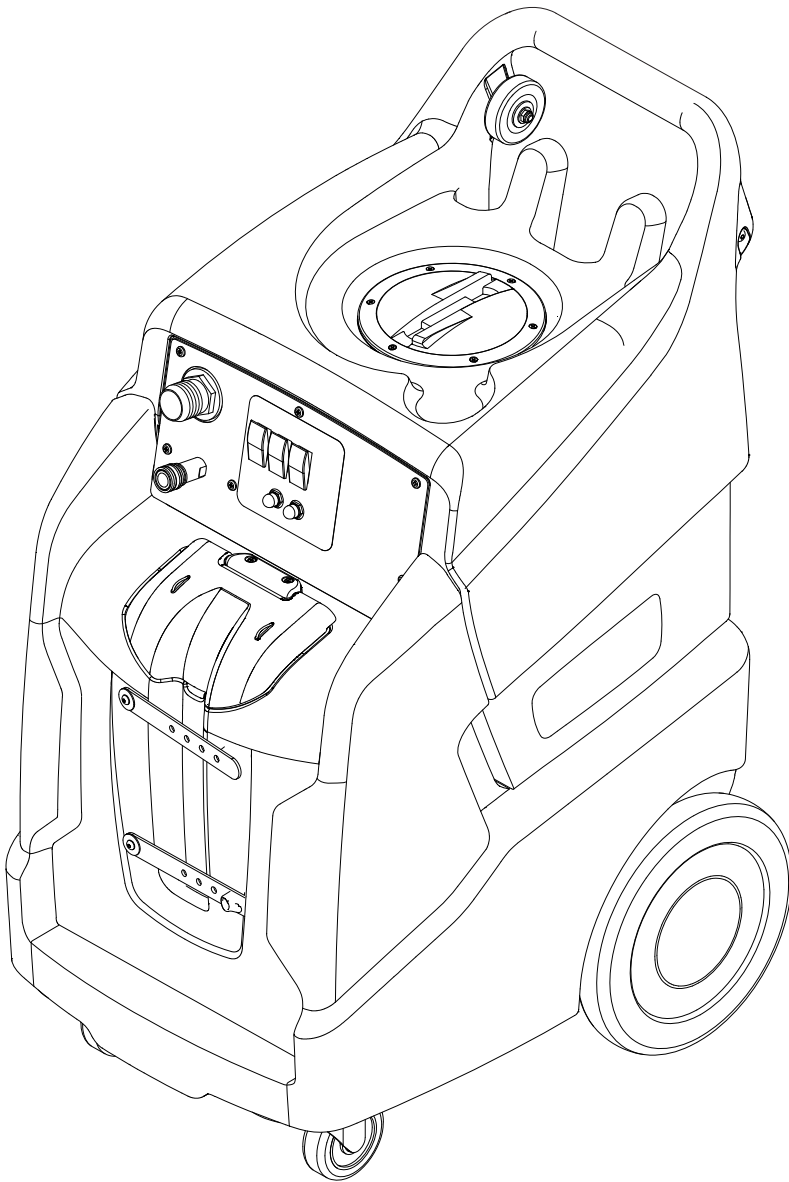
Warrior

100 PSI

Operating instructions (ENG)

MODELS:

WARRIOR 100
WARRIOR 100-10
WARRIOR 100-05



Read this instructions before using the machine.



| | |
|-----------------------|-------|
| Model: | _____ |
| Date of Purchase: | _____ |
| Serial Number: | _____ |
| Dealer: | _____ |
| Address: | _____ |
| Phone Number: | _____ |
| Sales Representative: | _____ |

OVERVIEW

The Warrior is an electric powered carpet extractor intended for commercial use. This appliance applies a cleaning solution to the carpet and then vacuums the soiled water back into the recovery tank.

| | |
|--|----------|
| Machine Data Log / Overview | 2 |
| Table of Contents | 3 |
| How to Use This Manual | 4 |

Safety

| | |
|-------------------------------------|---|
| IMPORTANT SAFETY INSTRUCTIONS | 5 |
| HAZARD INTENSITY LEVEL | 6 |
| Grounding Instructions | 7 |

Operations

| | |
|--------------------------------|-----------|
| Technical Specifications | 8 |
| Controls | 9 |
| Machine Operation | 10 |
| Chemicals | 10 |
| Pre-Run Inspection | 11 |
| Equipment Set-up | 11 |
| Heater Operation | 11 |
| Cleaning | 12 |

Maintenance

| | |
|---------------------------------|----|
| Periodic Maintenance | 13 |
| Daily/Regular Maintenance | 13 |
| Vacuum Motor Replacement | 14 |
| Solution Pump Replacement | 15 |
| Troubleshooting | 16 |

PARTS

| | |
|--------------------------------------|----|
| Control Panel | 19 |
| Control Panel with Heat | 21 |
| Electrical with 2 Stage Vacuum | 23 |
| Electrical with Heat | 25 |
| Frame | 27 |
| Heater | 29 |
| Labels | 31 |
| Pump | 33 |
| Pump with Heat | 35 |
| Recovery | 37 |
| Solution | 39 |
| Vacuum, 2-Stage/3-Stage | 41 |
| Wiring 2-2 Stage Vacuum | 43 |
| Wiring 2-3 Stage Vacuum | 44 |
| Wiring With Heater | 45 |
| Circuit Indicator Option | 46 |
| Warrior Warranty | 52 |

How to Use This Manual

This manual contains the following sections:

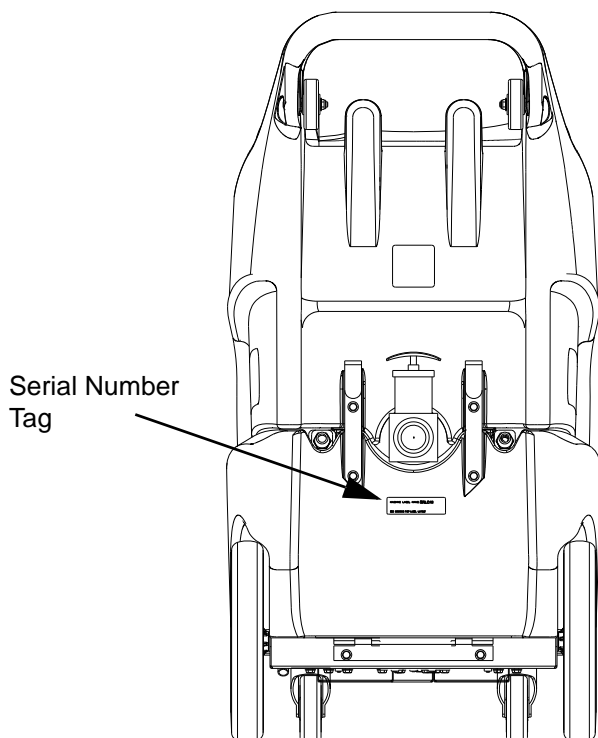
- How to Use This Manual
- Safety
- Operations
- Maintenance
- Parts List

The HOW TO USE THIS MANUAL section will tell you how to find important information for ordering correct repair parts.

Parts may be ordered from authorized dealers. When placing an order for parts, the machine model and machine serial number are important. Refer to the MACHINE DATA box which is filled out during the installation of your machine. The MACHINE DATA box is located on the inside of the front cover of this manual.

| | |
|-----------------------|-------|
| Model: | _____ |
| Date of Purchase: | _____ |
| Serial Number: | _____ |
| Dealer: | _____ |
| Address: | _____ |
| Phone Number: | _____ |
| Sales Representative: | _____ |

The model and serial number of your machine is located approximately where shown.



The SAFETY section contains important information regarding hazardous or unsafe practices of the machine. Levels of hazards are identified that could result in product damage, personal injury, or severe injury resulting in death.

The OPERATIONS section is to familiarize the operator with the operation and function of the machine.

The MAINTENANCE section contains preventive maintenance to keep the machine and its components in good working condition. They are listed in this general order:

- Maintenance
- Lubrication
- Vacuum Motor Replacement
- Solution Pump Replacement
- Troubleshooting

The PARTS LIST section contains assembled parts illustrations and corresponding parts list. The parts lists include a number of columns of information:

- **REF** – column refers to the reference number on the parts illustration.
- **PART NO.** – column lists the part number for the part.
- **PRV NO.** – reference number.
- **QTY** – column lists the quantity of the part used in that area of the machine.
- **DESCRIPTION** – column is a brief description of the part.
- **SERIAL NO. FROM** – If this column has an (*) and a Reference number, see the SERIAL NUMBERS page in the back of your manual. If column has two asterisk (**), call manufacturer for serial number. The serial number indicates the first machine the part number is applicable to. The main illustration shows the most current design of the machine. When a boxed illustration is shown, it displays the older design.
- **NOTES** – column for information not noted by the other columns.

NOTE: If a service or option kit is installed on your machine, be sure to keep the KIT INSTRUCTIONS which came with the kit. It contains replacement parts numbers needed for ordering future parts.

NOTE: The manual part number is located on the lower left corner of the front cover.

IMPORTANT SAFETY INSTRUCTIONS

When using an electrical appliance, basic precaution must always be followed, including the following:

READ ALL INSTRUCTIONS BEFORE USING THIS MACHINE.

This machine is for commercial use.

⚠ WARNING: To reduce the risk of fire, electric shock, or injury:

Connect to a **properly grounded outlet**. See Grounding Instructions.

Do not leave the machine unattended. Unplug machine from outlet when not in use and before maintenance or service.

Use only indoors. Do not use outdoors or expose to rain.

Do not allow machine to be used as a toy. **Close attention** is necessary when used by or near children.

Use only as described in this manual. Use only manufacturer's recommended components and attachments.

Do not use damaged electrical cord or plug. Follow all instructions in this manual concerning grounding the machine. If the machine is **not working properly**, has been dropped, damaged, left outdoors, or dropped into water, return it to an authorized service center.

Do not pull or carry machine by electrical cord, use as a handle, close a door on cord, or pull cord around sharp edges or corners.

Do not run machine over cord. **Keep** cord away from heated surfaces.

Do not unplug machine by pulling on cord. To unplug, grasp the electrical plug, not the electrical cord.

Do not handle the electrical plug or machine with wet hands.

Do not operate the machine with any openings blocked. Keep openings free of debris that may reduce airflow.

This machine is intended for cleaning carpet only.

Do not vacuum anything that is burning or smoking, such as cigarettes, matches, or hot ashes.

This machine is not suitable for picking up health endangering dust.

Turn off all controls before unplugging.

Machine can cause a fire when operating near flammable vapors or materials. Do not operate this machine near flammable fluids, dust or vapors.

This machine is suitable for commercial use, for example in hotels, schools, hospitals, factories, shops and offices for more than normal housekeeping purposes.

Maintenance and repairs must be done by qualified personnel.

If foam or liquid comes out of machine, switch off immediately.

SAVE THESE INSTRUCTIONS

The following symbols are used throughout this guide as indicated in their descriptions:

HAZARD INTENSITY LEVEL

There are three levels of hazard intensity identified by signal words **-WARNING** and **CAUTION** and **FOR SAFETY**. The level of hazard intensity is determined by the following definitions:



WARNING - Hazards or unsafe practices which COULD result in severe personal injury or death.



CAUTION - Hazards or unsafe practices which could result in minor personal injury or product or property damage.

FOR SAFETY: To Identify actions which must be followed for safe operation of equipment.

Report machine damage or faulty operation immediately. Do not use the machine if it is not in proper operating condition. Following is information that signals some potentially dangerous conditions to the operator or the equipment. Read this information carefully. Know when these conditions can exist. Locate all safety devices on the machine. Please take the necessary steps to train the machine operating personnel.

FOR SAFETY:

DO NOT OPERATE MACHINE:

Unless Trained and Authorized.

Unless Operation Guide is Read and understood.

In Flammable or Explosive areas.

In areas with possible falling objects.

WHEN SERVICING MACHINE:

Avoid moving parts. Do not wear loose clothing; jackets, shirts, or sleeves when working on the machine.

Use only manufacturer approved replacement parts.

Grounding Instructions

**THIS PRODUCT IS FOR COMMERCIAL
USE ONLY.**

ELECTRICAL:

In the USA this machine operates on a standard 15 amp 115V, 60 hz, A.C. power circuit. The amp, hertz, and voltage are listed on the data label found on each machine. Using voltages above or below those indicated on the data label will cause serious damage to the motors.

EXTENSION CORDS:

If an extension cord is used, the wire size must be at least one size larger than the power cord on the machine, and must be limited to 50 feet (15.5m) in length.

GROUNDING INSTRUCTIONS:

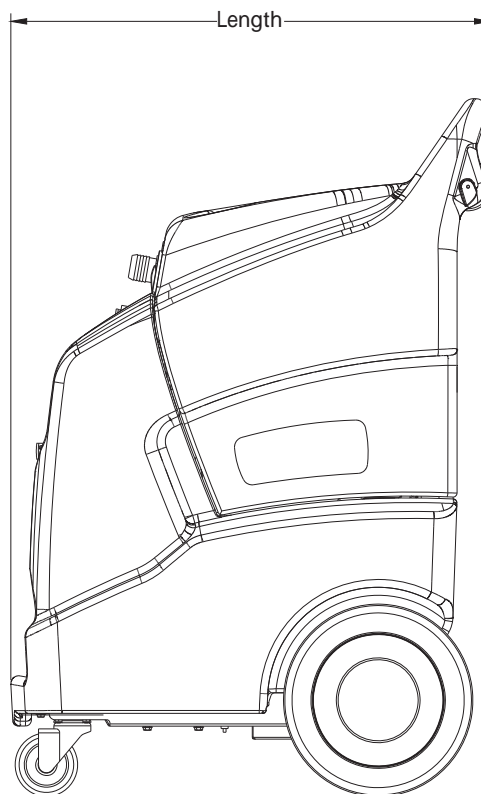
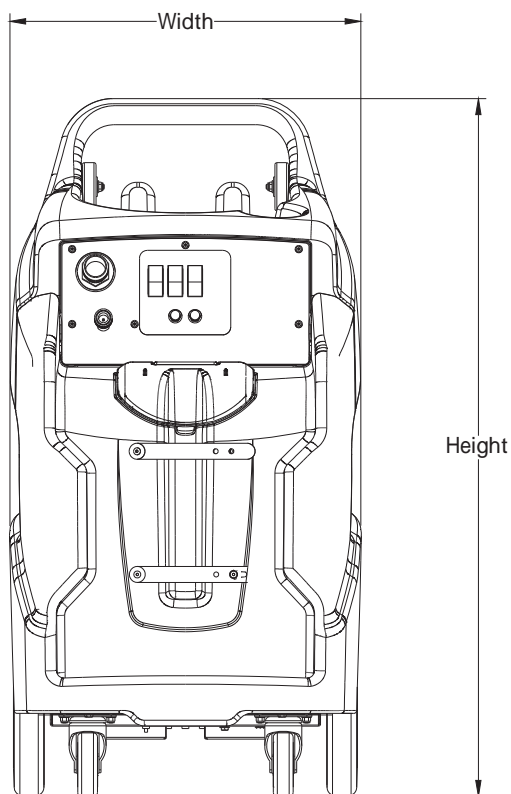
This appliance must be grounded. If it should malfunction or break down, grounding provides a path of least resistance for electric current to reduce the risk of electric shock. This appliance is equipped with a cord having an equipment-grounding conductor and grounding plug. The plug must be inserted into an appropriate outlet that is properly installed and grounded in accordance with all local codes and ordinances.

WARNING:

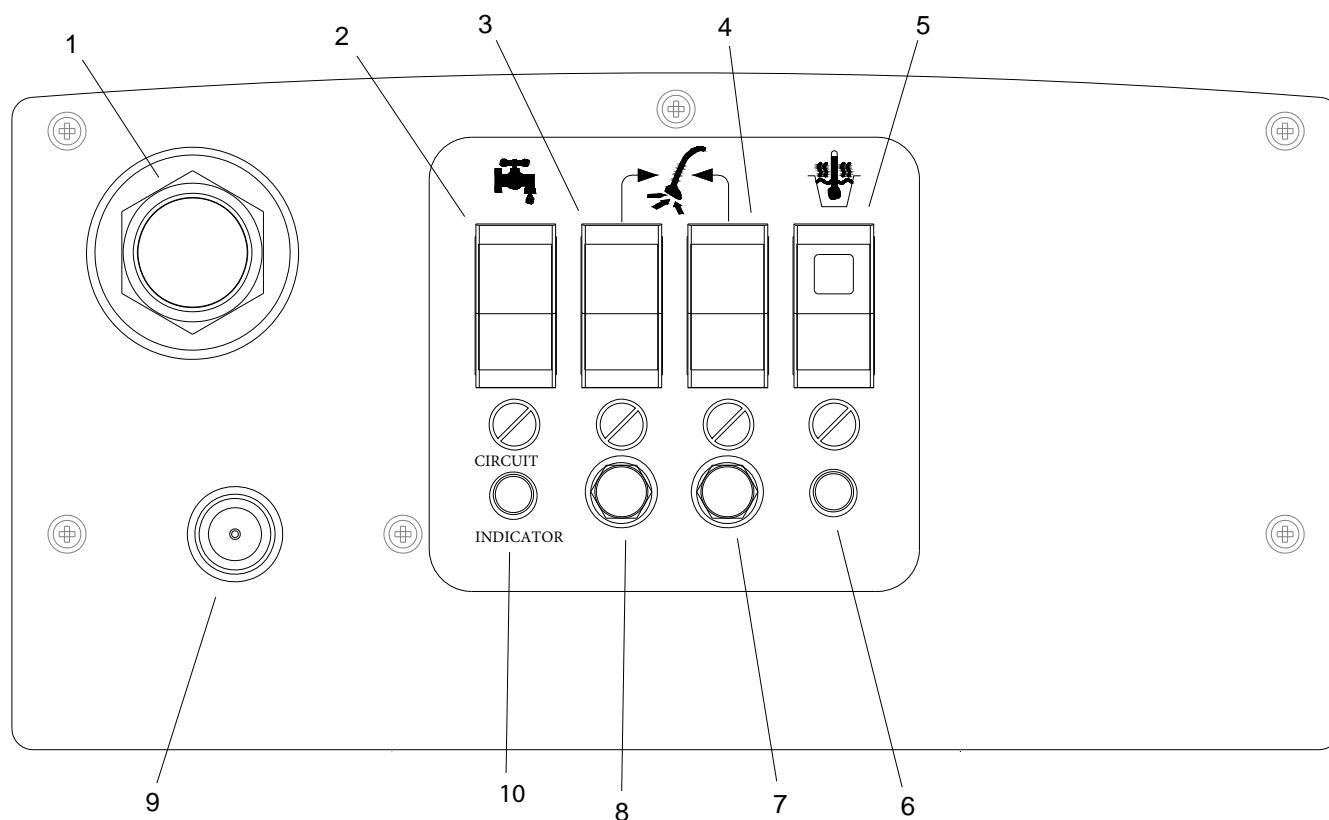
Improper connection of the equipment-grounding conductor can result in a risk of electric shock. Check with a qualified electrician or service person if you are in doubt as to whether the outlet is properly grounded. Do not modify the plug provided with the appliance - if it will not fit the outlet, have a proper outlet installed by a qualified electrician.

Technical Specifications

| MODEL | ITEM | MEASURE |
|------------------------|----------------------|----------------------|
| ALL | Electrical | 115 Volt, 60 hz, 15A |
| | Solution Pump | 100 psi |
| | Solution Capacity | 13 Gal |
| | Recovery Capacity | 11Gal |
| | Height | 43 inches |
| | Length | 30 inches |
| | Width | 22 inches |
| WARRIOR 100 &100-05 | Vaccum Motor | Dual 2 Stage |
| | Weight- Empty | 113 lbs |
| | Weight-Full Solution | 208 lbs |
| | Power cord | 1 X 25 feet |
| WARRIROR 100-10 | Vaccum Motor | Dual 2 Stage |
| | Weight- Empty | 120 lbs |
| | Weight-Full Solution | 215 lbs |
| | Power cord | 2 X 25 feet |
| | Heater | 1850 watts |



Controls



- | | |
|---|--|
| 1. Vacuum Accessory Tool Hook-up | 6. Heater Temperature Light (Units with Heat Only) |
| 2. Solution Pump Switch | 7. Breaker for Vacuum 2 |
| 3. Vacuum 1 Switch | 8. Breaker for Vacuum 1 |
| 4. Vacuum 2 Switch | 9. Solution Accessory Tool Hook-up |
| 5. Heater Switch with On Light (Units with Heat Only) | 10. Circuit Indicator (Option) |

Machine Operation

WARNING:

Care must be exercised in the use of all chemicals. Chemicals are poisonous and can pose a health risk. Read and follow manufacturers instructions regarding dangers and correct usages.

CAUTION:

The internal parts of the pump used in the machine are suitable for use with most carpet cleaning chemicals. But they are susceptible to chemical attack from some cleaning substances, such as hydrocarbon solvents and chlorinated bleaches. These non-compatible materials are not of the type used for carpet cleaning.

Only use chemicals approved for use with this machine. Use of non-compatible chemicals may cause machine damage and will not be covered under the warranty. Carefully read ingredients on manufacturer's label before using any product in this machine.

WARNING:

Do not let pump run dry.

WARNING:

Do not let pump run unattended.

Chemicals

Suitable Chemicals

- Alkalies
- Detergents
- Hydroxides
- Soaps
- Vinegar

Non-Compatible

- Aldehydes
- Aromatics Hydrocarbons
- SP Butyls
- Carbon Tetrachloride
- Clorox*
- Chlorinated Bleaches
- Chlorinated Hydrocarbons
- Lysol*
- Methyl Ethel Ketone (MEK)
- Perchlorethylene (perc)
- Phenolics
- Trichlorethylene
- D-Limonene

*Registered Trademark

Pre-Run Inspection

1. Check all fittings and connectors for proper assembly.
2. Check all hoses for leaks. Repair or replace any damaged hoses.
3. Check power cord(s) for any damage. If damaged, replace.

Equipment Set-up

1. Plug power cord from machine into properly grounded wall outlet.
2. Turn vacuum motor switch on and on to make sure there is electrical power at machine.
3. 100 PSI pump priming instructions:
 - Fill fresh water tank with hot water and cleaning detergent
 - Attach prime hose to quick connect on machine
 - Place the other end of prime hose into vacuum port and hold
 - Turn vacuum and pump switches on
 - Once a continuous flow of water is being drawn through the prime hose, this indicates pump is primed
 - Turn off vacuum and pump switches and disconnect prime hose
4. Connect vac hose to machine. Slide the swivel cuff over the outlet on the tank.
5. Connect the hose to your machine and wand. Pull back the knurled collar on the quick disconnect coupler and push on to the connection on the chassis. To avoid leaks, check that a positive connection was made.

NOTE: Wand orifice must be equivalent or larger than an 03 nozzle.

Heater Operation

NOTE: Units with Heat Only.



The solution fittings on the machine will become extremely hot during operation. Allow sufficient time to cool, or run solution through the machine with the heater turned off before disconnecting or performing any maintenance on the heater.

Plug the two power cords into separate grounded circuits. The heater draws 15 amps of current.

Turn the solution pump **ON**. Fully prime the solution system before turning heater on.

Turn the heater switch on. The red light on the heater switch will be on when the heater switch is on. The red heater temperature light will be on when the heater is active and will turn off when the heater reaches maximum temperature.

On initial start-up the heater will take a few minutes to reach operating temperature.

When turning the pump and Heater OFF, make certain that you turn the heater OFF first.

Cleaning

WARNING:

Always use defoamer if foaming occurs. Foam will suspend large particles that may damage vacuum(s) as well as allow liquid into the vacuum motor(s) without activating the float shutoff.

1. Prior to cleaning, make certain that the nozzle is functioning properly.
 - a. To check, hold the wand about one foot above the surface to be cleaned and open the wand valve. A full spray should be observed from the nozzle.
 - b. If the nozzle is not showing a full spray pattern, adjust nozzle for proper pattern, clean, or replace nozzle.
2. Normally, chemical is applied on the push stroke of the wand when cleaning. Vacuuming is done on the pull stroke. For heavily soiled carpets the wand may be used in a scrubbing manner, applying chemical in both the push and pull stroke.
3. When cleaning, keep the working opening (wand mouth) flat on the surface being cleaned. Keep the wand moving when the valve is open.
4. The shutoff float inside the vacuum tank will impede the vacuum flow when the vacuum tank is full. When this occurs, empty the vacuum tank by opening the dump valve and dispose of the waste in a proper manner.

Once the vacuum tank has been emptied, you may once again proceed with cleaning.

Periodic Maintenance

Twice a month, flush a white vinegar solution (one quart vinegar to two gallons of water) or anti-browning solution (mixed as directed) through the machine. This will prevent build-up of alkaline residue in the system. If spray jets become clogged, remove the spray tips, wash them thoroughly, and blow dry.

NOTE: Do not use pins, wires, etc. to clean nozzles as this could destroy the spray pattern.

Periodically inspect all hoses, electrical cables and connections on your machine. Frayed or cracked hoses should be repaired or replaced to eliminate vacuum or solution pressure loss. The electrical cable must be well insulated and cable connector screw kept tight. If the cable insulation is broken or frayed, repair or replace immediately. Don't take chances with electrical fire or shock.

Daily/Regular Maintenance



Before making any repairs or adjustments to the machine, disconnect the power cords from the electrical source.

1. Empty unused cleaning solution from the solution tank.
2. Inspect and clean filter screen in solution tank.
3. Flush pumping system with 1 to 2 gallons of clean water.
4. After each use, rinse tank with fresh water. Periodically inspect the recovery tank and decontaminate if necessary, using a Hospital Grade Virucide or a 10-1 bleach to water solution. Waste water should be disposed of properly.

Do not allow machine to freeze.

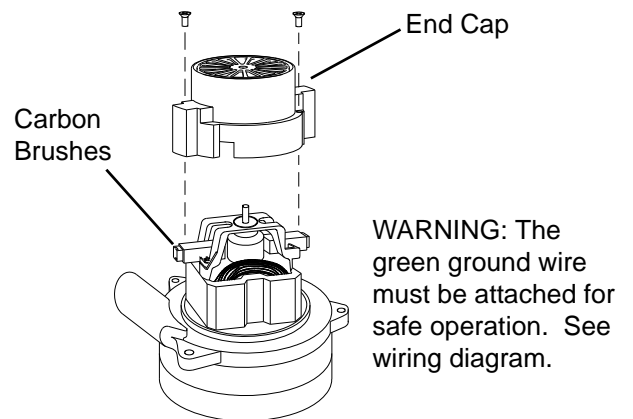
| SERVICE SCHEDULE | DAILY | WEEKLY | QUARTERLY |
|--|-------|--------|-----------|
| Check machine for cord damage | * | | |
| Check recovery dome and gasket for damage and cleanliness | * | | |
| Check hoses for wear, blockages, or damage | * | | |
| Check handles, switches, and knobs for damage | * | | |
| Run one gallon of water through system | * | | |
| Clean out recovery tank and check float valve to make sure it moves freely | * | | |
| Clean out solution tank and remove and clean vacuum intake screen | * | | |
| Clean outside of all tanks and check for damage | * | | |
| Run vac motor for at least one minute to allow motor to dry | * | | |
| Store with dome off tank to allow the tank to dry | * | | |
| Check all gaskets for wear and leakage | | * | |
| Check pump pressure; observe spray pattern and check with gauge if necessary | | * | |
| Check and clean solution screen | | * | |
| Check cables for fraying | | * | |
| Check overall performance of machine | | * | |
| Check vac motor carbon brushes | | | * |

⚠ WARNING:

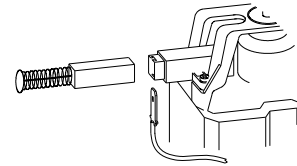
Only qualified maintenance personnel are to perform the following repairs.

Vacuum Motor Replacement

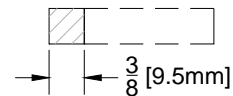
1. Turn off all switches and unplug machine.
2. Remove hardware under front of machine to access component compartment.
3. Remove vacuum motor cover and disconnect motor wires.
4. Remove the vacuum motor.
5. Reverse process to install vacuum motor.

Vacuum Motor Carbon Brushes Replacement

If armature commutator is grooved, extremely pitted or not concentric, the motor will need to be replaced or sent to a qualified service center.

**Important:**

These brushes wear quicker as the length shortens due to increased heat. Spring inside brush housing will damage motor if brushes are allowed to wear away completely.

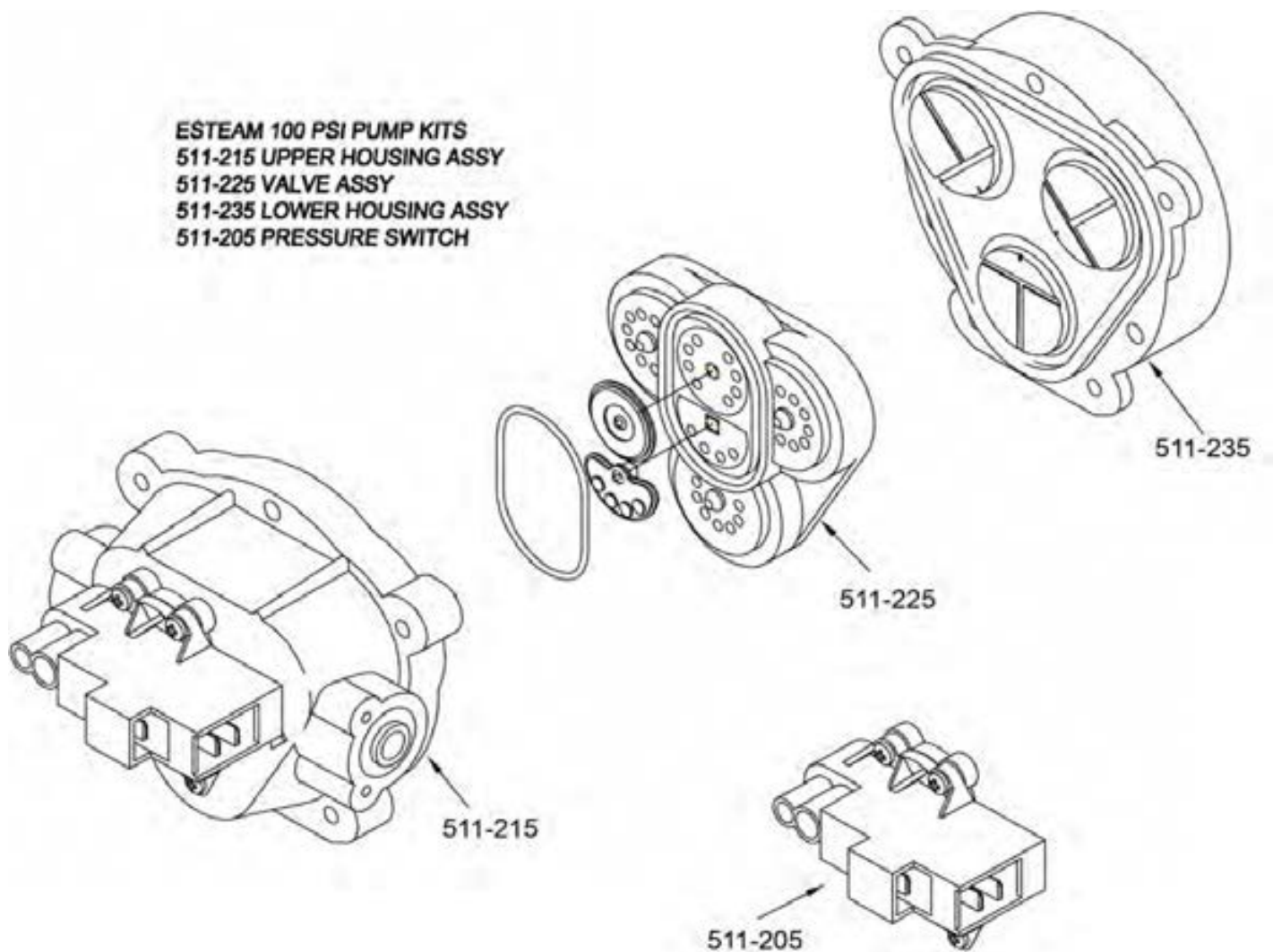


Periodically check the length of the carbon brushes. Replace both carbon brushes when either is less than 3/8" (9.5mm) long.

Solution Pump Replacement

⚠ WARNING:

Only qualified maintenance personnel are to perform the following repairs.

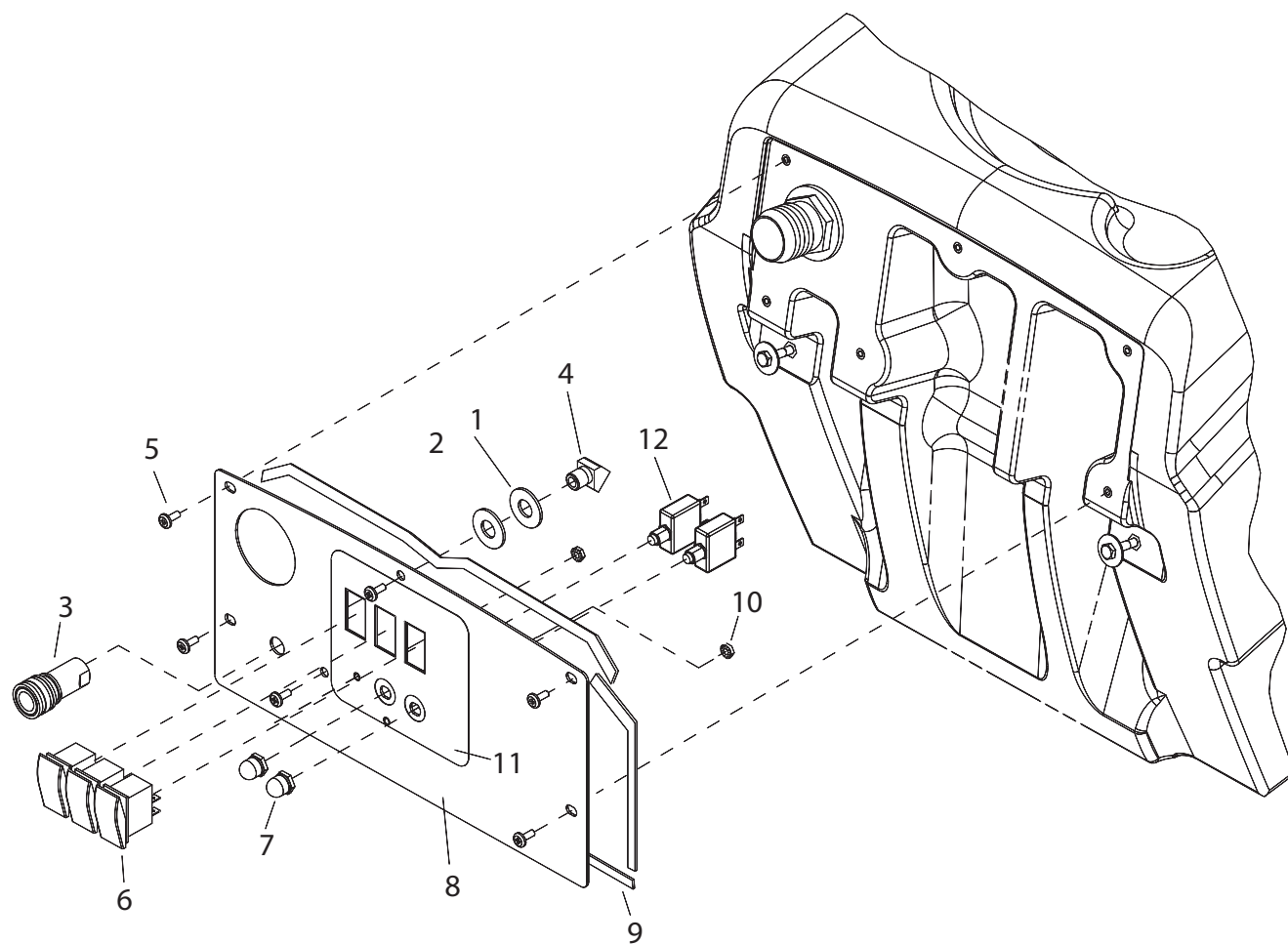


Troubleshooting

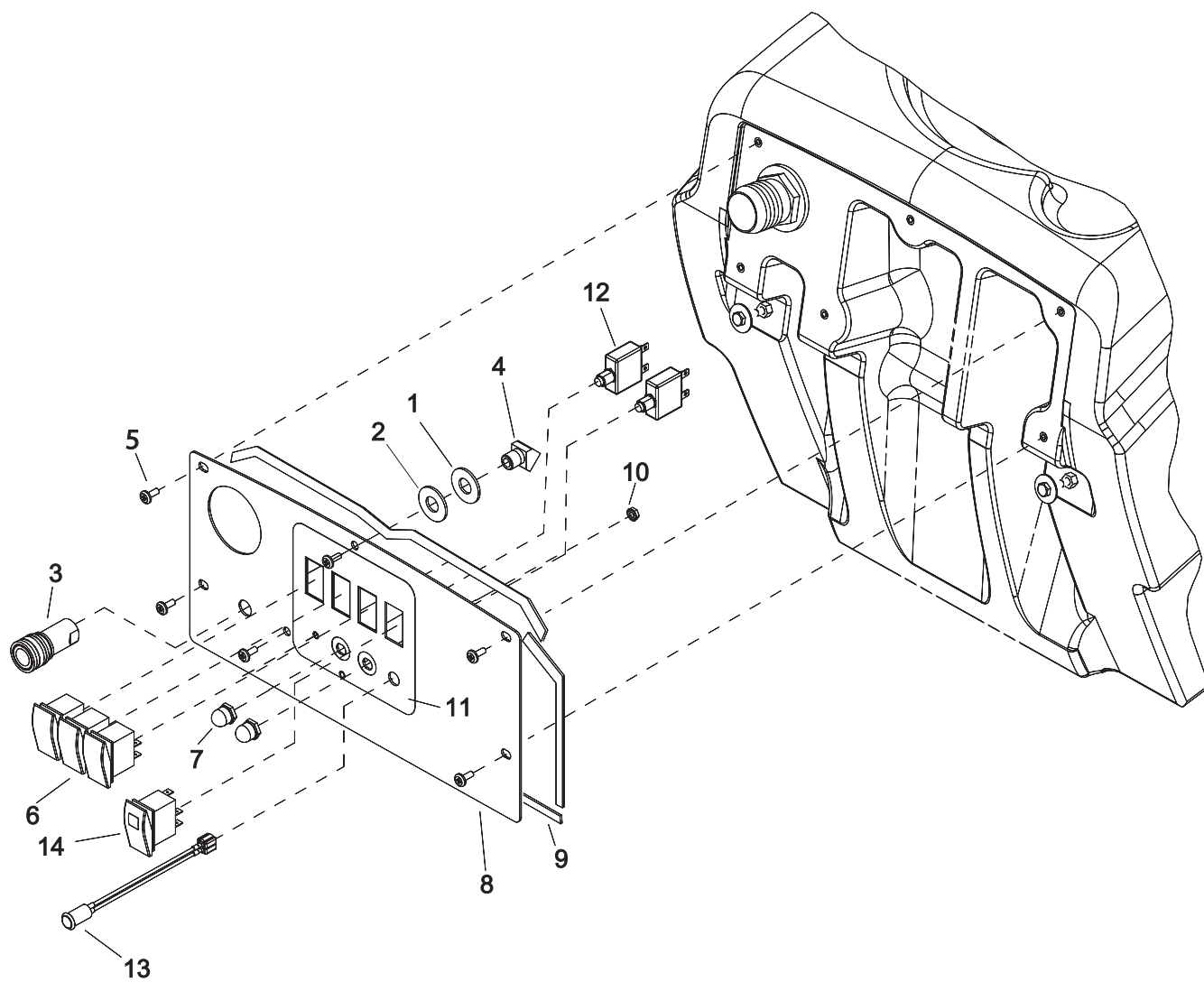
| PROBLEM | CAUSE | SOLUTION |
|---------------------------------------|--|---|
| Loss of Power | Unit not plugged in | Connect unit to 3 prong grounded outlet. |
| | Dead electrical circuit | Check building circuit breaker or fuse box. |
| | Faulty power cord | Replace |
| Electrical shock | Receptacle not grounded | Contact an electrician to check building's wiring |
| | Internal wiring problem | Have a trained service technician check machine's wiring |
| Vac motor speed varies or doesn't run | Vacuum circuit breaker tripped | Reset Breaker |
| | Faulty vacuum motor | Replace |
| | Faulty switch | Replace |
| Loss of vacuum | Loose vacuum dome | Center and seal dome over tank |
| | Crack in dome or poor joint | Replace or repair using acrylic plastic cement only |
| | Lint or dirt clogging vacuum screen | With power off clean screen |
| | Loose cuffs on vacuum hose | Tighten cuffs turning counterclockwise |
| | Vac motor seals leaking | Replace |
| | Floor tool vac chamber clogged | Wash out with hose. Pick lint out with a wire |
| | Vacuum hose damaged | Replace |
| | Recovery tank full / Float ball stuck in the up position | Turn off power, drain recovery tank. |
| Pump runs no solution | Pump inlet screen plugged | Clean inlet screen |
| | Pump not primed | Press trigger to open valve on cleaning wand to relieve air lock. |
| | Internal or external solution line damaged and leaking | Replace |
| Pump runs, loss of pressure | Internal pump components wearing out | Replace, see pump kit components |
| Pump will not run | Faulty switch | Replace |
| | Loose wiring | Repair or replace |
| Solution hose fitting hard to connect | Corrosion on fittings. | Clean with steel wool. Soak in acetic acid (white vinegar). Lubricate lightly with silicone base lubricant. |
| Carpet not getting clean | Severe soil conditions | Make several passes at right angles to each other. Use a pre-spray. |
| Carpet too wet | Over saturation | Make several passes without spray |
| Carpet browning | Leaving carpet too wet | Check for loss of vac pressure |
| | Too much chemical | Check label for correct solution concentration |
| Solution not flowing properly | Solution hose connection | Check for positive connection |
| | Faulty pump | Repair or replace |
| | Faulty floor tool valve / Nozzle | Repair or replace |
| | Faulty pump switch | Repair |

Notes:

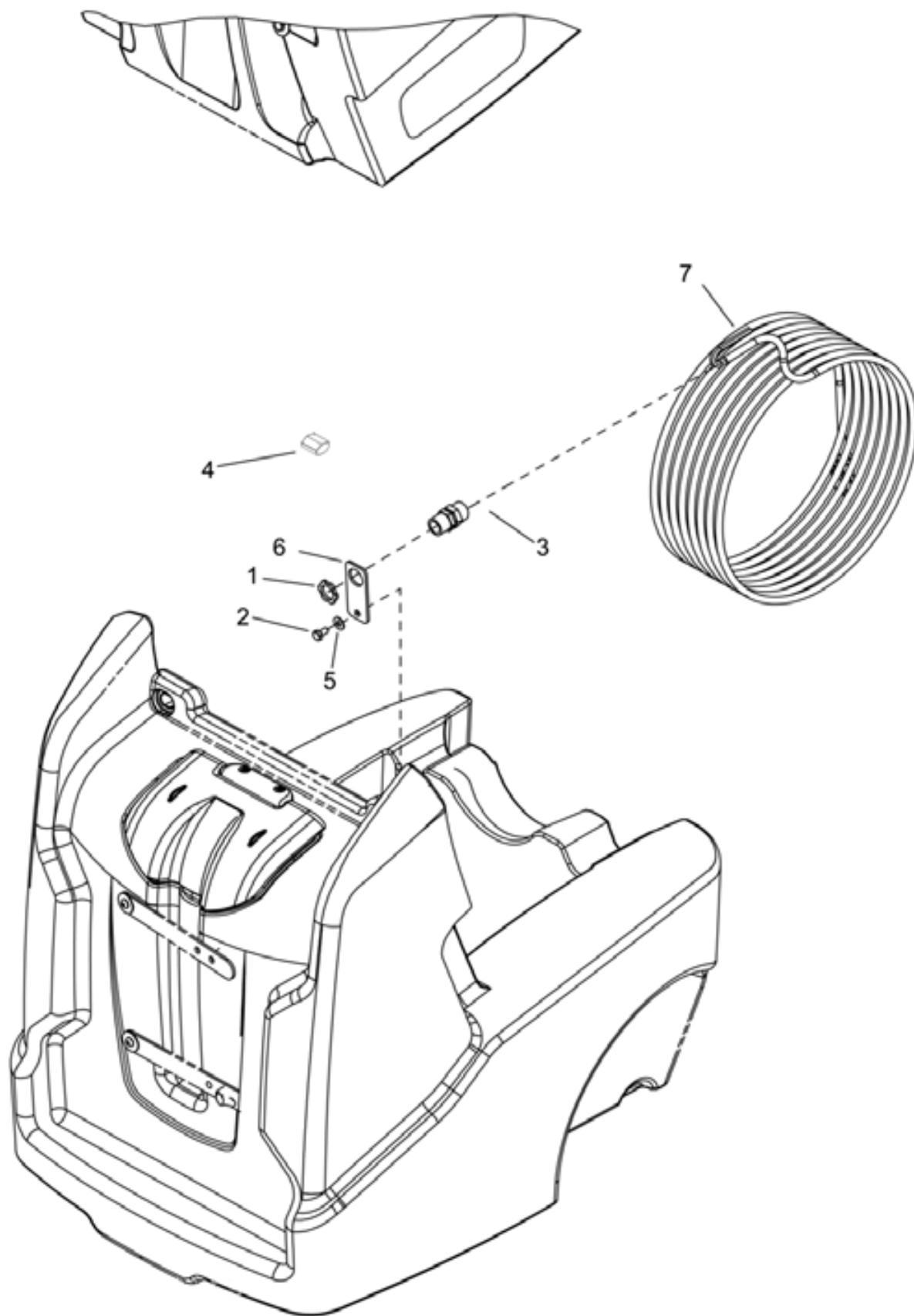
PARTS



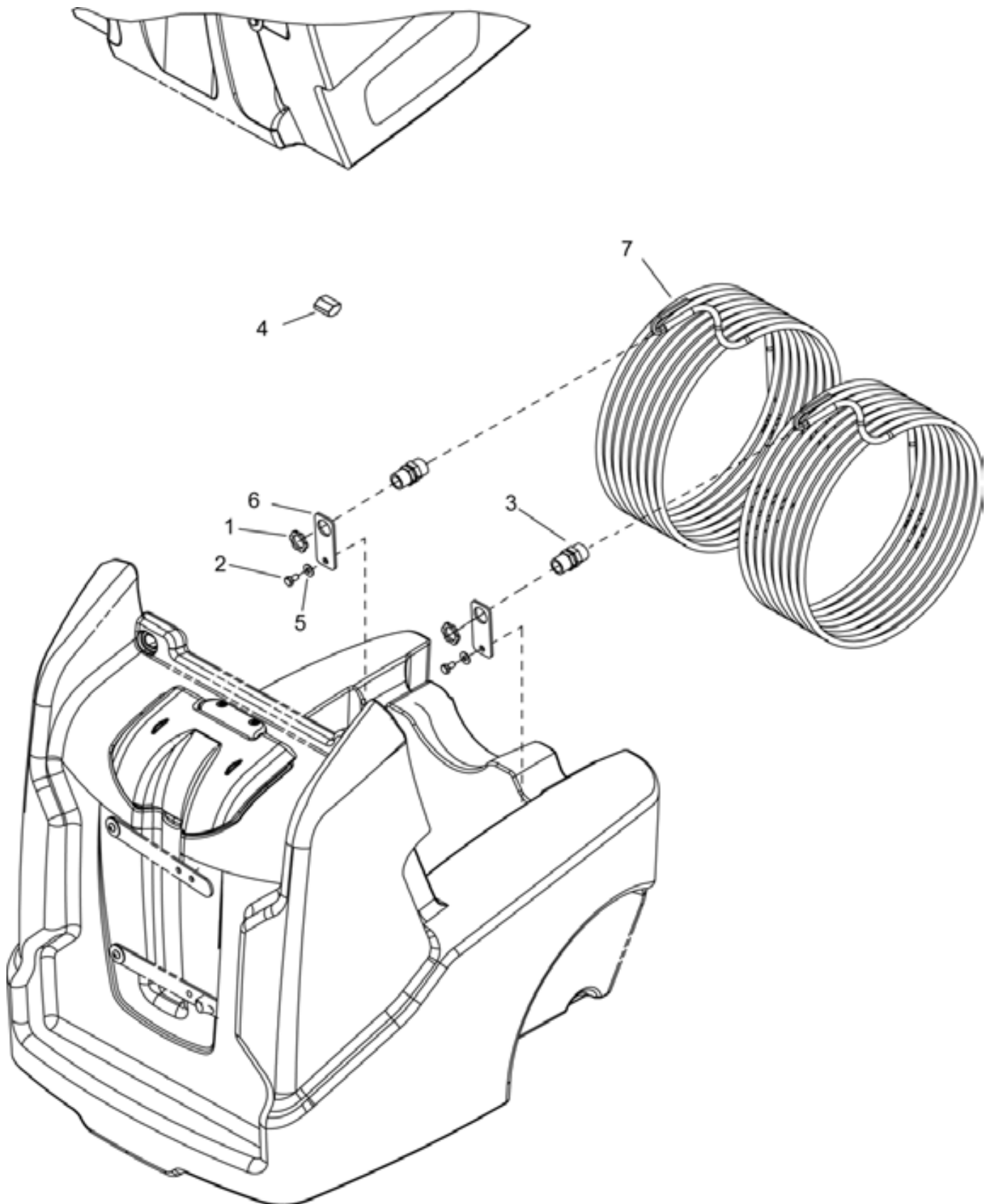
| REF | PART NO | DESCRIPTION | NOTE |
|-----|---------|--------------------------------|------|
| 1 | 415-155 | FW, 1/2 SS | |
| 2 | 415-156 | FW, 1/2 SS (Stand/Max OD) | |
| 3 | 580-010 | Q.C. 1/4 FEM (Close) | |
| 4 | 555-184 | Elbow 45,Street 1/4 | |
| 5 | 410-205 | MS, 10-32 x 1/2 Panphil SS | |
| 6 | 305-075 | Switch, SPST 2-Position Rocker | |
| 7 | 340-180 | Boot, Seal Breaker | |
| 8 | 845-081 | Control Panel | |
| 9 | 475-040 | Gasket 1/8 x 1 | |
| 10 | 400-150 | Locknut 10 x 32 Nylon SS | |
| 11 | 703-008 | Decal Warrior Panel | |
| 12 | 340-162 | Breaker 15A | |



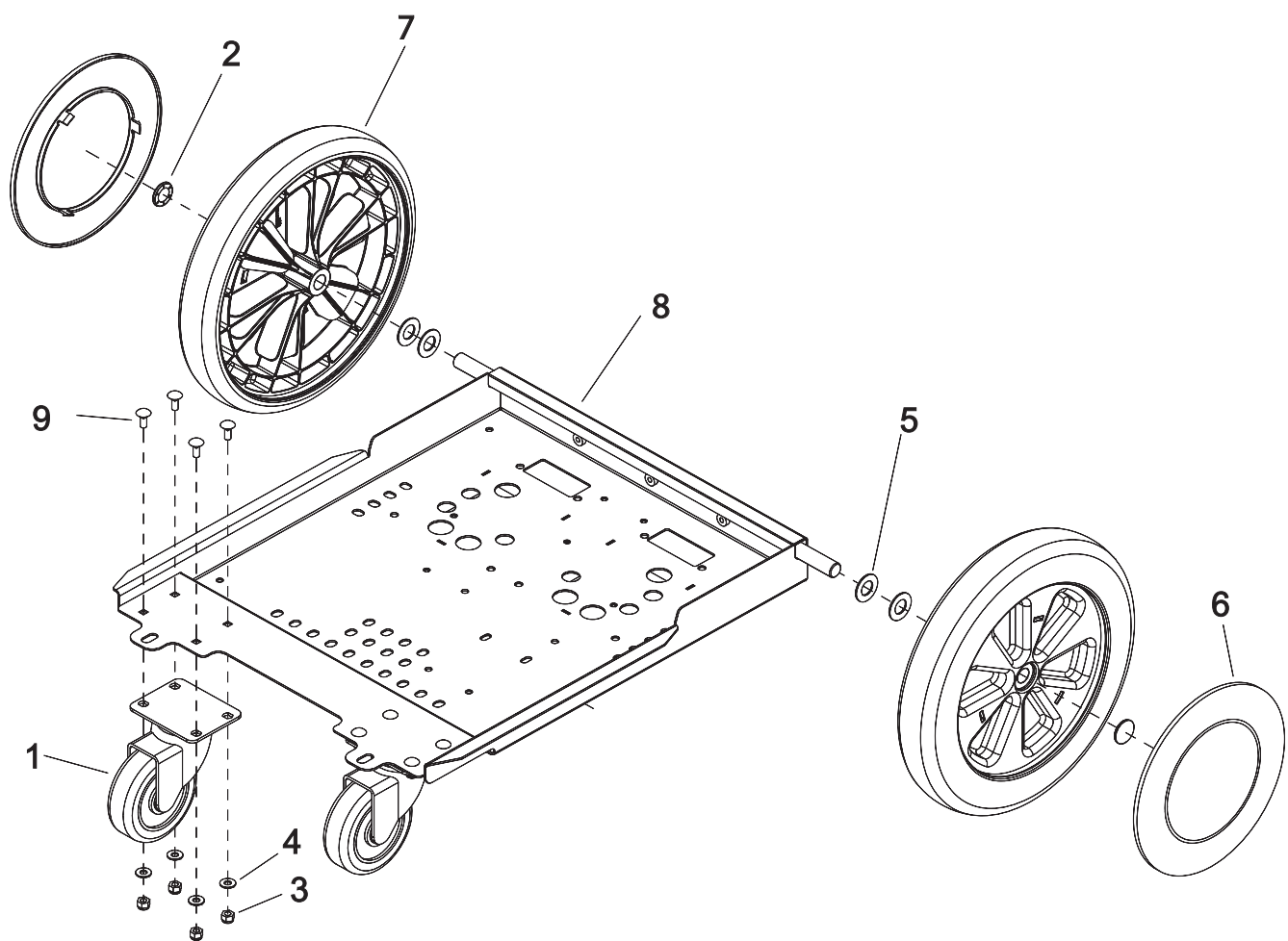
| REF | PART NO | DESCRIPTION | NOTE |
|-----|---------|-----------------------------------|------|
| 1 | 415-155 | FW, 1/2 SS | |
| 2 | 415-156 | FW, 1/2 SS (Stand/Max OD) | |
| 3 | 580-010 | Q.C. 1/4 FEM (Close) | |
| 4 | 555-184 | Elbow 45,Street 1/4 | |
| 5 | 410-205 | MS, 10-32 x 1/2 Panphil SS | |
| 6 | 305-075 | Switch, SPST 2-Position Rocker | |
| 7 | 340-180 | Boot, Seal Breaker | |
| 8 | 845-081 | Control Panel | |
| 9 | 475-040 | Gasket 1/8 x 1 | |
| 10 | 400-150 | Locknut 10 x 32 Nylon SS | |
| 11 | 703-008 | Decal Warrior Panel | |
| 12 | 340-162 | Breaker 15A | |
| 13 | 320-110 | Lamp, Panel 110V | |
| 14 | 305-076 | Switch, Lighted 2-Position Rocker | |



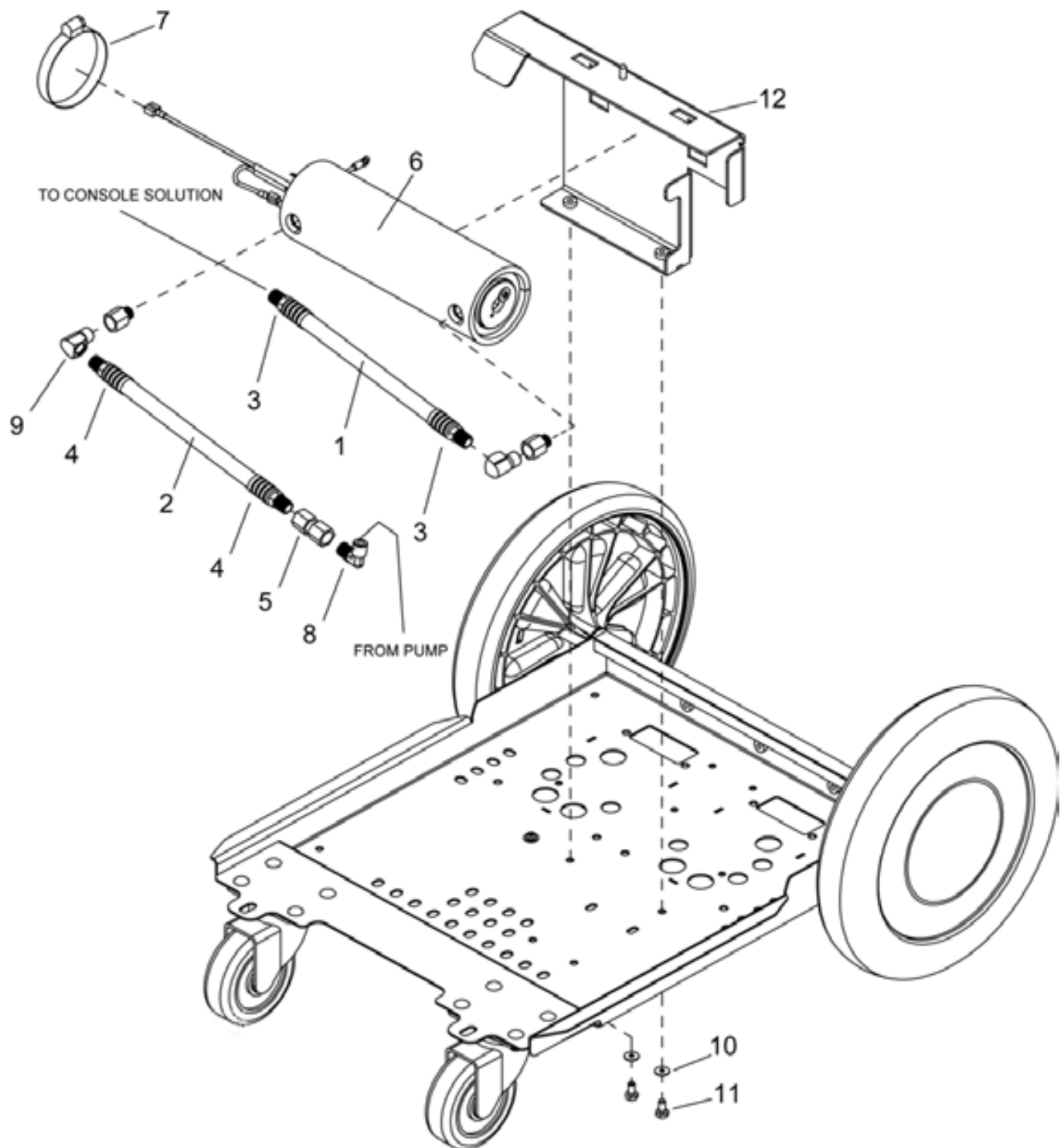
| REF | PART NO | DESCRIPTION | NOTE |
|-----|---------|----------------------------------|------|
| 1 | 400-165 | Locknut, 1/2 Steel/Strain Relief | |
| 2 | 405-615 | Bolt, 1/4 x 1/2 | |
| 3 | 335-015 | Strain Relief, 14 Gauge | |
| 4 | 325-015 | Connector, 5 Position, Push Wire | |
| 5 | 415-125 | FW, 1/4 SS | |
| 6 | 465-084 | BRKT, Cord Strain Relief | |
| 7 | 315-015 | Cord, 25' Black 14/3 SJTW-A | |



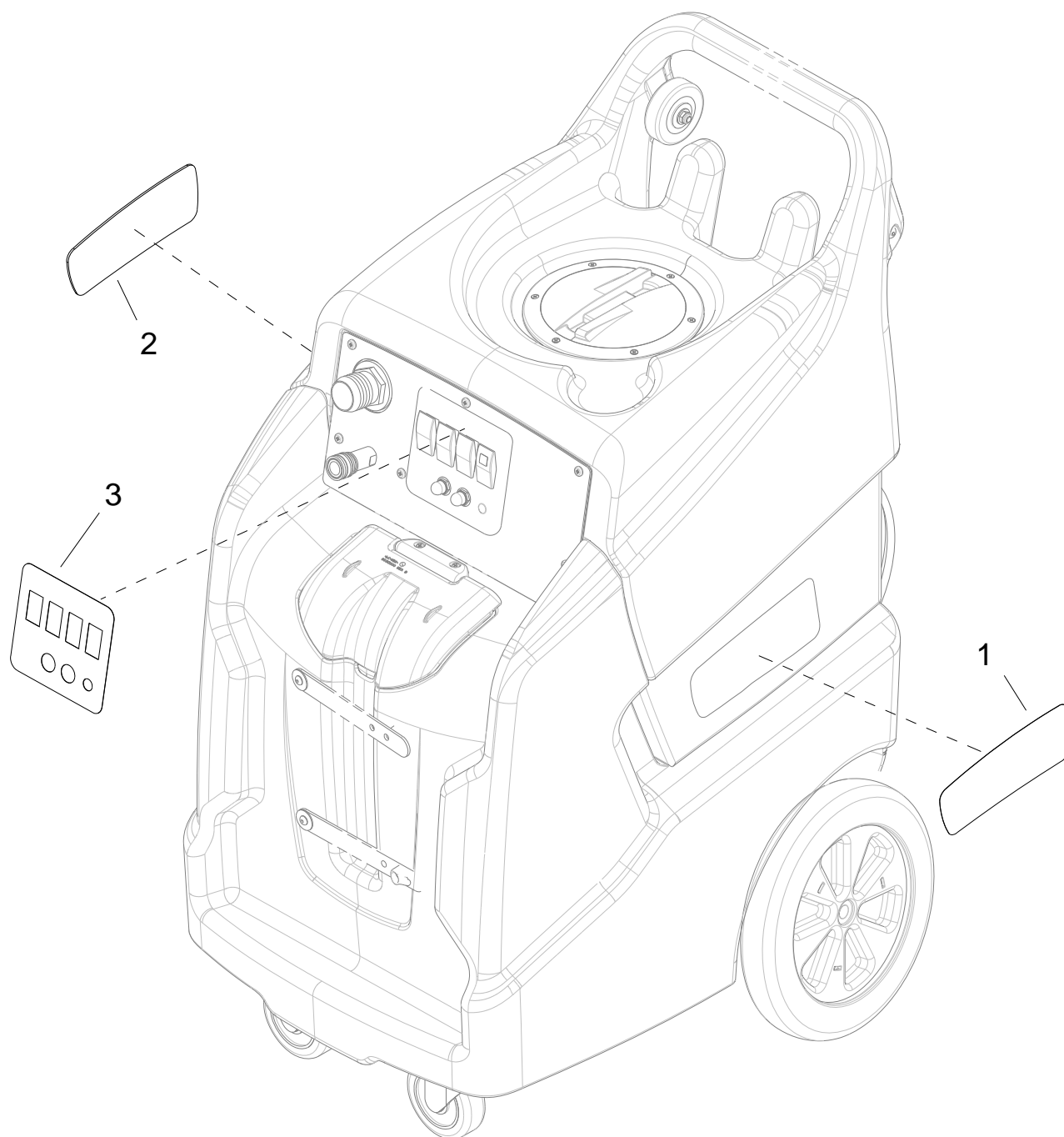
| REF | PART NO | DESCRIPTION | NOTE |
|-----|---------|----------------------------------|------|
| 1 | 400-165 | Locknut, 1/2 Steel/Strain Relief | |
| 2 | 410-205 | MS, 10-32 x 1/2 Panphil SS | |
| 3 | 335-015 | Strain Relief, 14 Gauge | |
| 4 | 325-015 | Connector, 5 Position, Push Wire | |
| 5 | 415-125 | FW, 1/4 SS | |
| 6 | 465-084 | BRKT, Cord Strain RELief | |
| 7 | 315-015 | Cord, 25' Black 14/3 SJTW-A | |



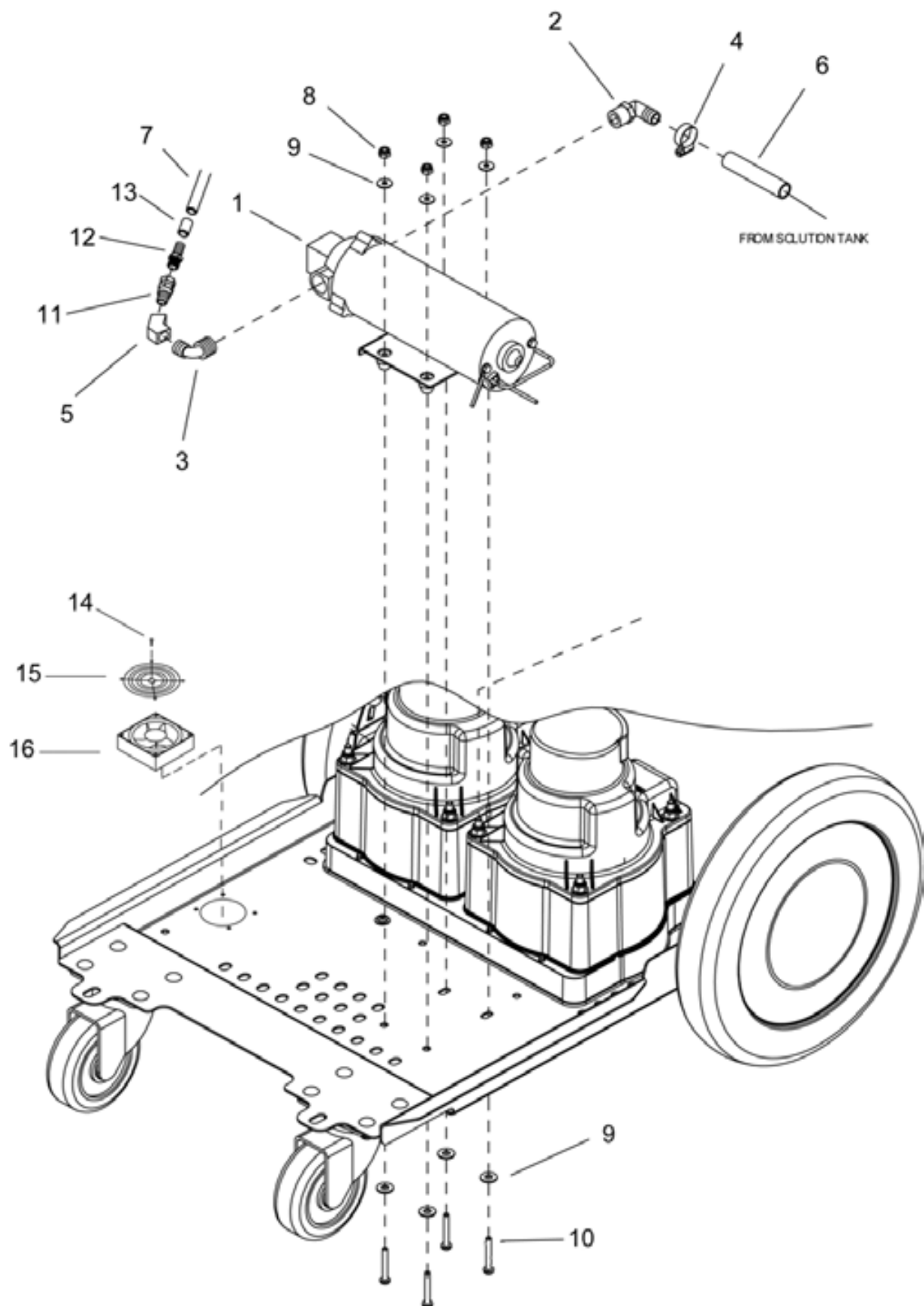
| REF | PART NO | DESCRIPTION | NOTE |
|-----|---------|------------------------|------|
| 1 | 455-075 | Caster, Swivel 4" | |
| 2 | 455-090 | Hubcap, 5/8 Shaft | |
| 3 | 400-010 | Hex Nut, 1/4 x 20 Zinc | |
| 4 | 415-120 | FW, 1/4 zinc | |
| 5 | 415-165 | FW, 5/8 SS | |
| 6 | 455-085 | Hubcap, 9.5 Wheel | |
| 7 | 455-080 | Wheel, 12 x 2.25 | |
| 8 | 845-090 | Frame, Base, Warrior | |



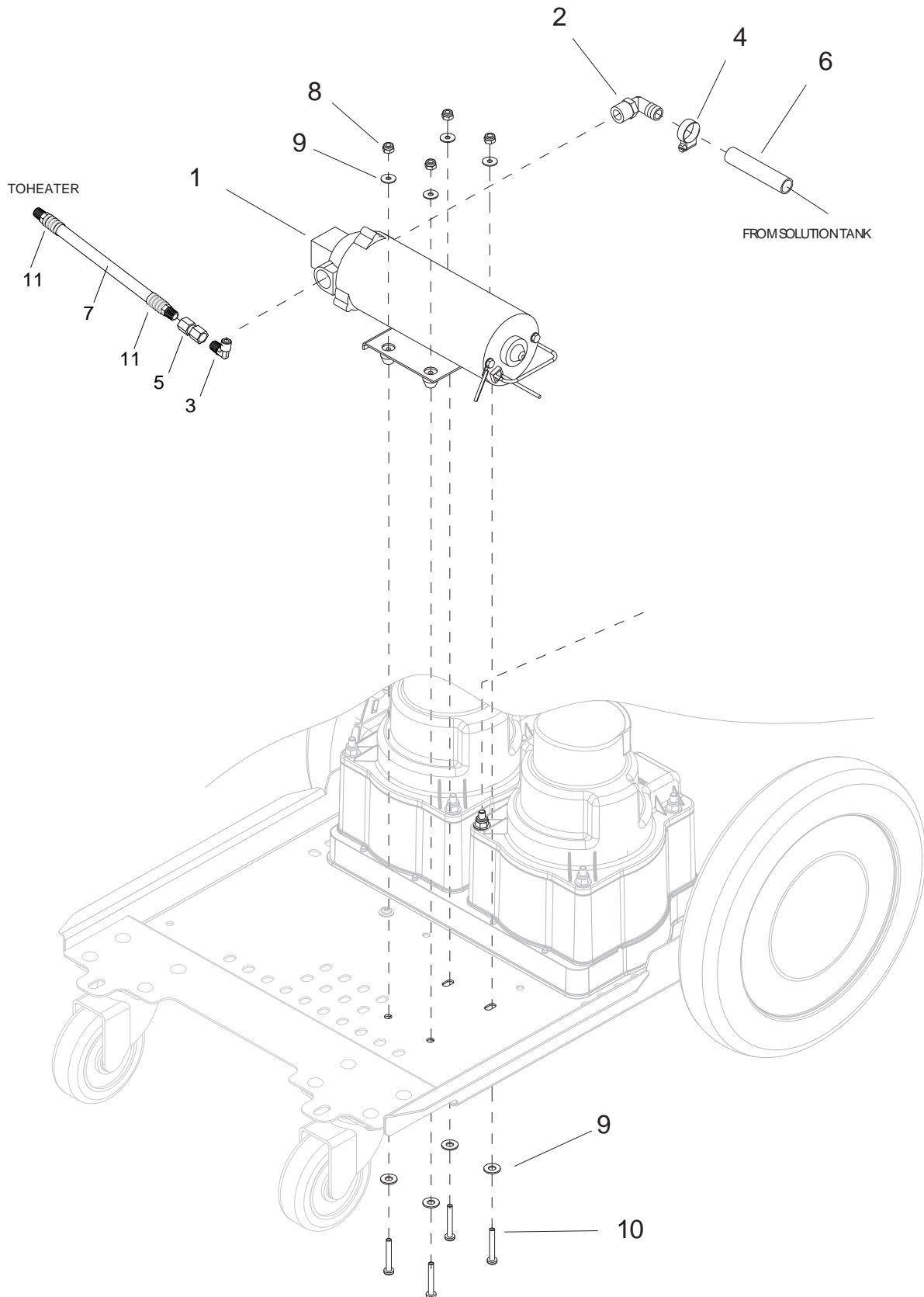
| REF | PART NO | DESCRIPTION | NOTE |
|-----|---------|--|------|
| 1 | 572-042 | Blue Neptune 1/4 | |
| 2 | 572-125 | Pulse Hose 3/8 | |
| 3 | 581-015 | Crimp FTNG, 1/4 HP Hose - 1/4 MPT SVL | |
| 4 | 581-065 | Crimp FTNG, 3/8 Pulse Hose – 1/4 MPT SVL | |
| 5 | 550-035 | Check valve, 1/4 FM x FM | |
| 6 | 490-005 | Foamed Casing, Round 1850W | |
| 7 | 425-040 | Clamp #60 | |
| 8 | 555-210 | Elbow 90, 3/8 MPT x 1/4 MPT | |
| 9 | 555-208 | Elbow 90, 1/4 Street Extruded | |
| 10 | 415-125 | FW, 1/4 SS | |
| 11 | 405-615 | Bolt, 1/4 x 1/2 SS | |
| 12 | 465-086 | Bracket, Heater Mount | |



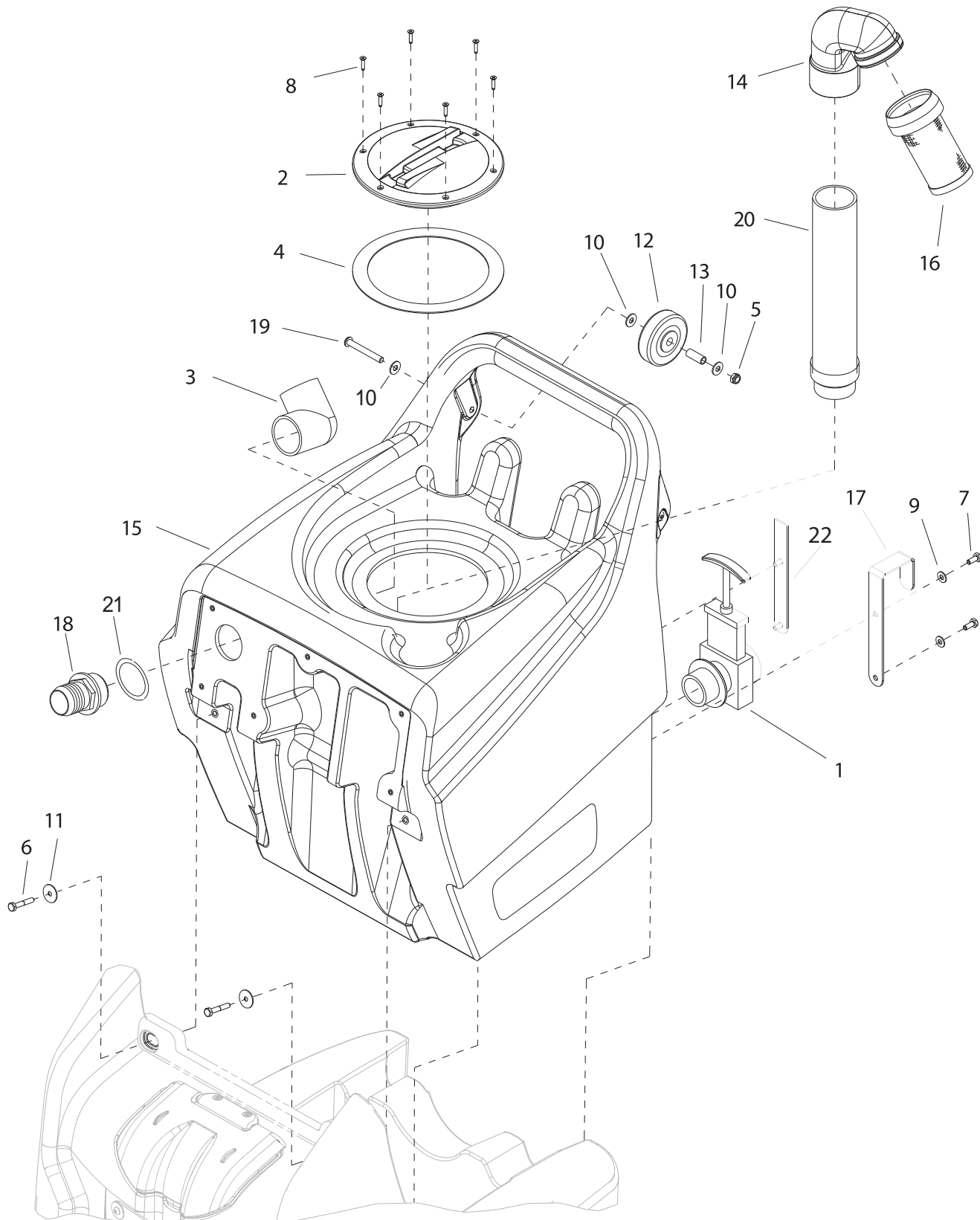
| REF | PART NO | DESCRIPTION | NOTE |
|-----|---------|---------------------|------|
| 1 | 703-006 | Decal Warrior LH | |
| 2 | 703-007 | Decal Warrior RH | |
| 3 | 703-008 | Decal Warrior Panel | |



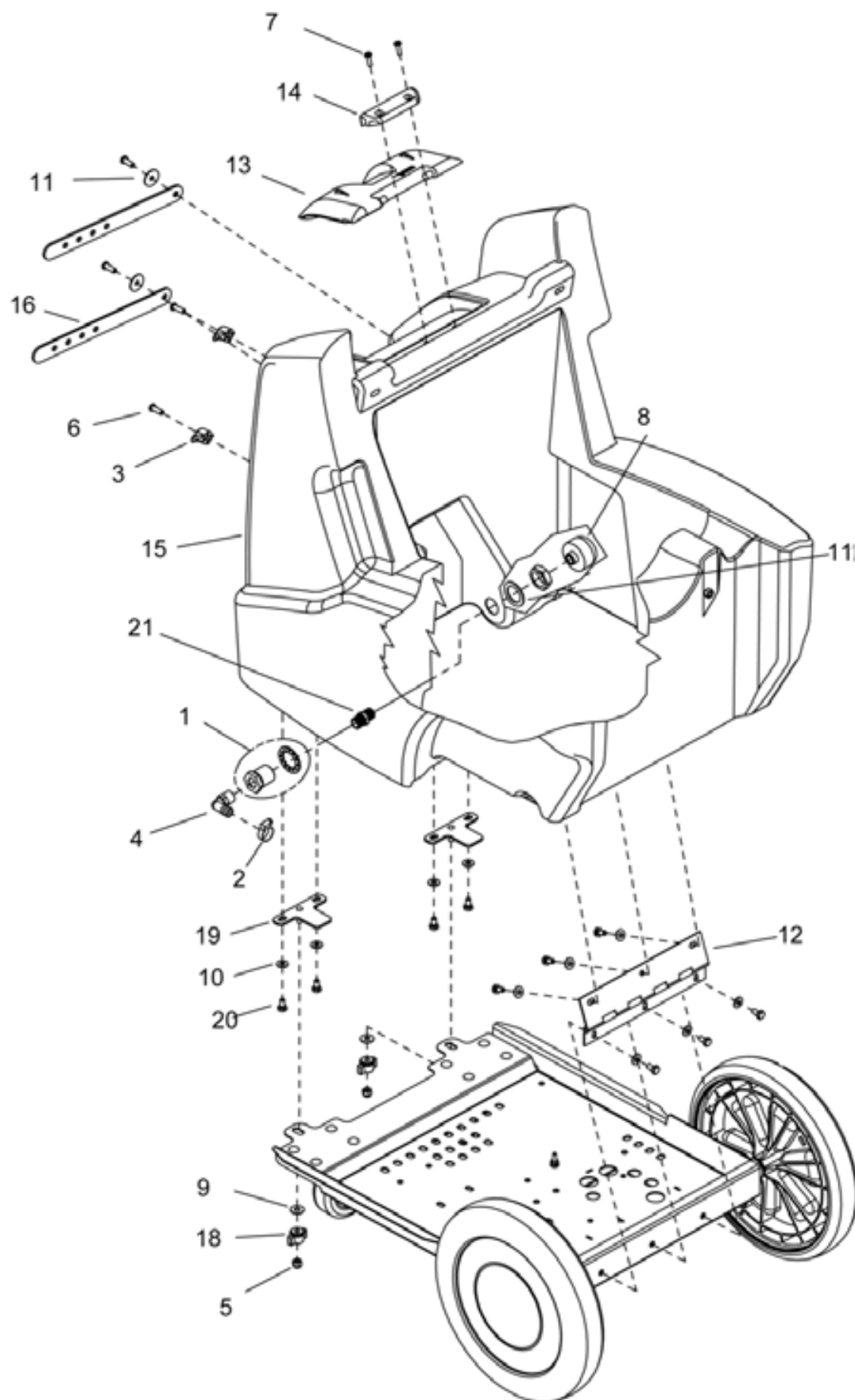
| REF | PART NO | DESCRIPTION | NOTE |
|-----|---------|-------------------------------|------|
| 1 | 511-100 | Pump, 100 PSI 115V | |
| 2 | 585-110 | Nylon, 90 Barb 1/2 x 3/8 NPT | |
| 3 | 510-090 | Nylon, 90 Barb 3/8 x 3/8 NPT | |
| 4 | 425-005 | Clamp #6 | |
| 5 | 555-182 | Elbow 45, 1/4 FEM. Extruded | |
| 6 | 572-155 | Poly Spring hose, 1/2 | |
| 7 | 572-041 | L.P. Hose 3/8 | |
| 8 | 400-135 | Locknut, 1/4 x 20 Nylon Zinc | |
| 9 | 415-125 | FW, 1/4 SS | |
| 10 | 405-020 | Bolt, 1/4 x 1-1/4 SS | |
| 11 | 582-080 | swivel, 1/4 M x 1/4 F | |
| 12 | 555-364 | Hose Barb, 3/8 Barb x 1/4 MPT | |
| 13 | 555-254 | Ferrule, 3/8 Hose | |
| 14 | 410-225 | SMS, 10 x 1/2 Pan RB Zinc | |
| 15 | 560-325 | Guard, Finger 4" Muffin Fan | |
| 16 | 333-005 | Fan Muffin 4" 115V | |



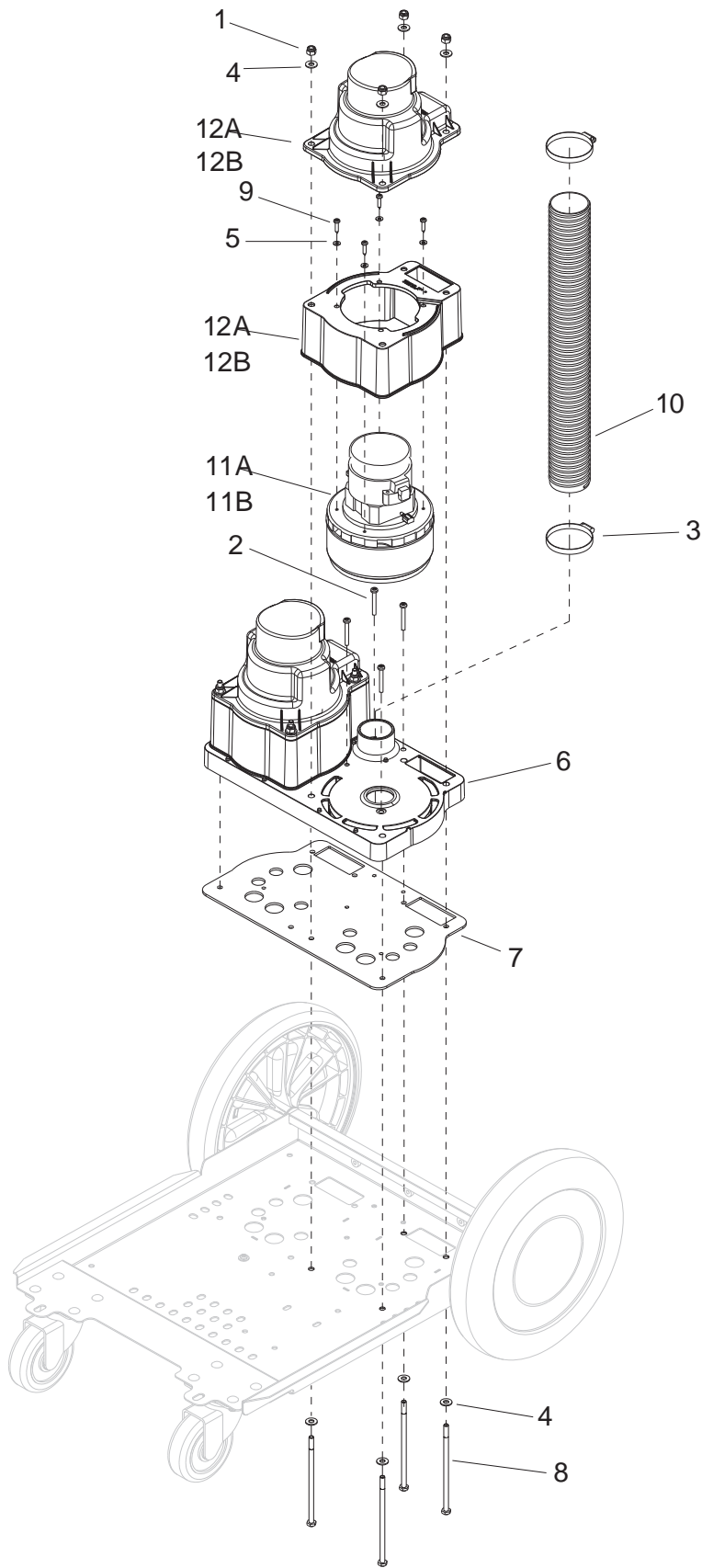
| REF | PART NO | DESCRIPTION | NOTE |
|-----|---------|--|------|
| 1 | 511-100 | Pump, 100 PSI 115V | |
| 2 | 585-110 | Nylon, 90 Barb 1/2 x 3/8 NPT | |
| 3 | 555-210 | Elbow 90, 3/8 MPT x 1/4 MPT | |
| 4 | 425-005 | Clamp #6 | |
| 5 | 550-035 | Check valve, 1/4 FM x FM | |
| 6 | 572-155 | Poly Spring hose, 1/2 | |
| 7 | 572-125 | Pulse Hose 3/8 | |
| 8 | 400-135 | Locknut, 1/4 x 20 Nylon Zinc | |
| 9 | 415-125 | FW, 1/4 SS | |
| 10 | 405-615 | Bolt, 1/4 x 1/2 SS | |
| 11 | 581-065 | Crimp FTNG, 3/8 Pulse Hose – 1/4 MPT SVL | |



| REF | PART NO. | DESCRIPTION | NOTES: |
|-----|----------|--------------------------------------|--------|
| 1 | 545-100 | Dump Valve, 1 1/2" | |
| 2 | 585-210 | Clear Cover, 6" C/W Ring | |
| 3 | 590-020 | PVC ELB 1 1/2" 90, S x FIPT | |
| 4 | 475-125 | Gasket 6" Access Cover Clear | |
| 5 | 400-116 | Locknut, 5/16 x18 Nylon SS | |
| 6 | 405-026 | Bolt, 1/4 x 1-1/2 Zinc | |
| 7 | 405-615 | CS, 1/4 x 1/2 SS (Hex HD) | |
| 8 | 410-125 | SMS, 8 x 5/8 Pan Rob SS | |
| 9 | 415-125 | FW, 1/4 SS | |
| 10 | 415-128 | FW, 5/16 SS | |
| 11 | 415-305 | FNDW, 1/4 SS | |
| 12 | 455-070 | Wheel, 3" | |
| 13 | 355-230 | Vac Bolt Spacer 3/8 x 1-1/8 | |
| 14 | 597-015 | Adpt (RM) 30 Degree, Float 2" | |
| 15 | 495-320 | Rec tank, Warrior Blue | |
| 16 | 597-062 | Float Screen Cage 2" | |
| 17 | 465-082 | BRKT, Cord Mount | |
| 18 | 590-419 | PVC Hose Barb, 2" HB x 1 1/2" MPT | |
| 19 | 410-265 | MS, 5/16 x 2-1/2 Pan Phil SS | |
| 20 | 595-010 | ABS Pipe, 2" | |
| 21 | 415-420 | Machined Washer 1 7/8 | |
| 22 | 465-066 | Brace, Warrior Tank (W/O Heat Model) | |

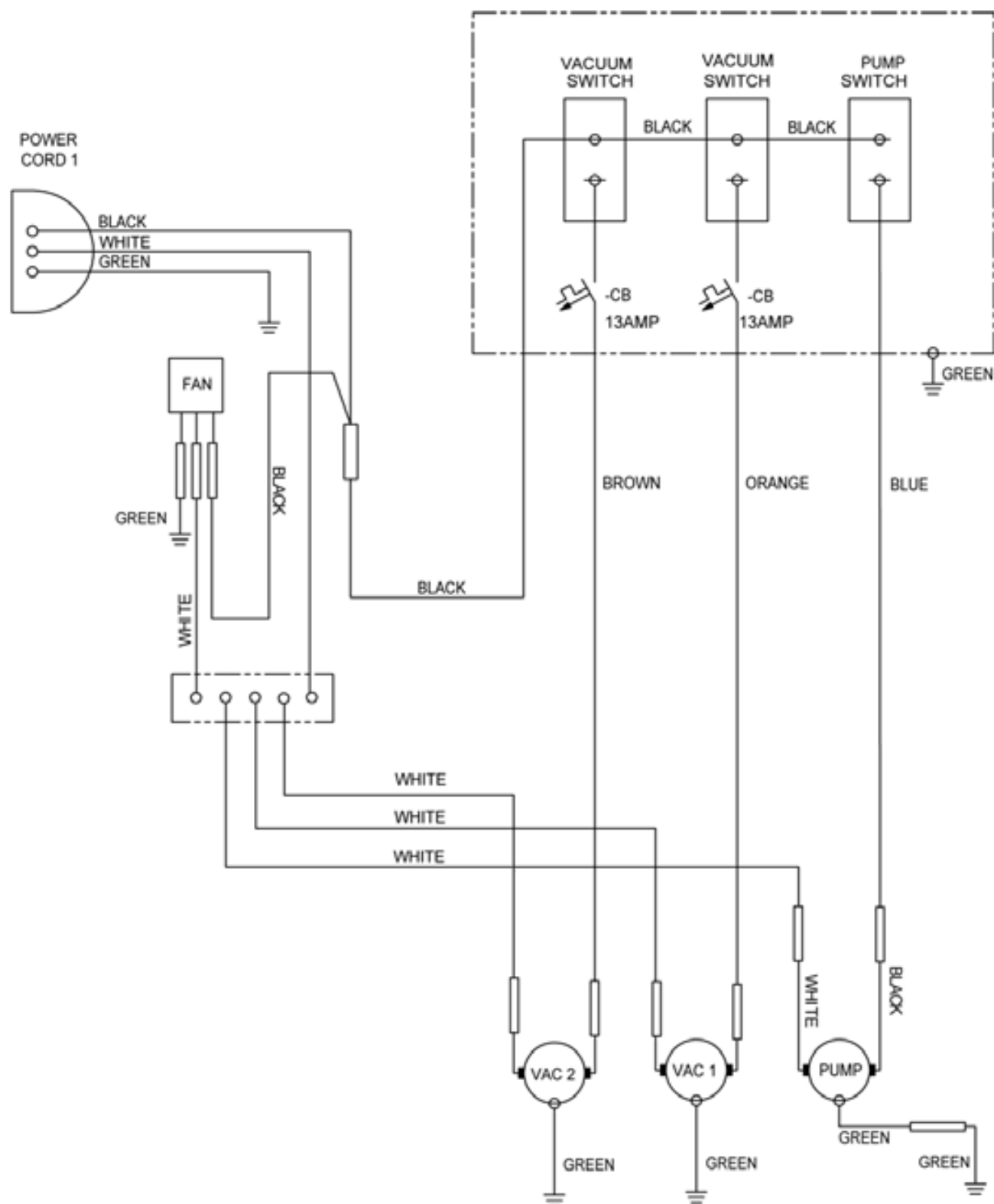


| REF | PART NO. | DESCRIPTION | NOTES: |
|-----|----------|------------------------------|--------|
| 1 | 555-705 | Terminal Bolt 3/8 x 3/8 | |
| 2 | 425-005 | Clamp, #6 | |
| 3 | 350-115 | Hook ,Strap | |
| 4 | 585-110 | Nylon 90 Barb, 1/2 x 3/8 NPT | |
| 5 | 400-005 | Hex Nut 1/4 SS | |
| 6 | 410-226 | MS, 14-20 x 3/4 Allan | |
| 7 | 410-205 | MS, 10-32 x 1/2 SS | |
| 8 | 560-034 | Strainer Acorn | |
| 9 | 415-120 | FW, 1/4 Zinc | |
| 10 | 415-125 | FW, 1/4 SS | |
| 11 | 415-305 | FNDW, 1/4 SS | |
| 12 | 440-015 | Hinge, 9.5 x .074 | |
| 13 | 495-330 | Lid, Solution Tank | |
| 14 | 440-010 | Hinge BRKT, solution Tank | |
| 15 | 493-325 | Solution Tank | |
| 16 | 460-015 | Strap, Tool Holder | |
| 17 | 415-187 | FW, 1-1/8 | |
| 18 | 435-060 | Knob, 1/4 Hex Press-Loc Wing | |
| 19 | 845-089 | Plate, mounting Solution | |
| 20 | 405-615 | CS, 1/4 x 1/2 SS (Hex HD) | |
| 21 | 555-274 | Hex Nipple, 3/8 x 1 1/2 Long | |

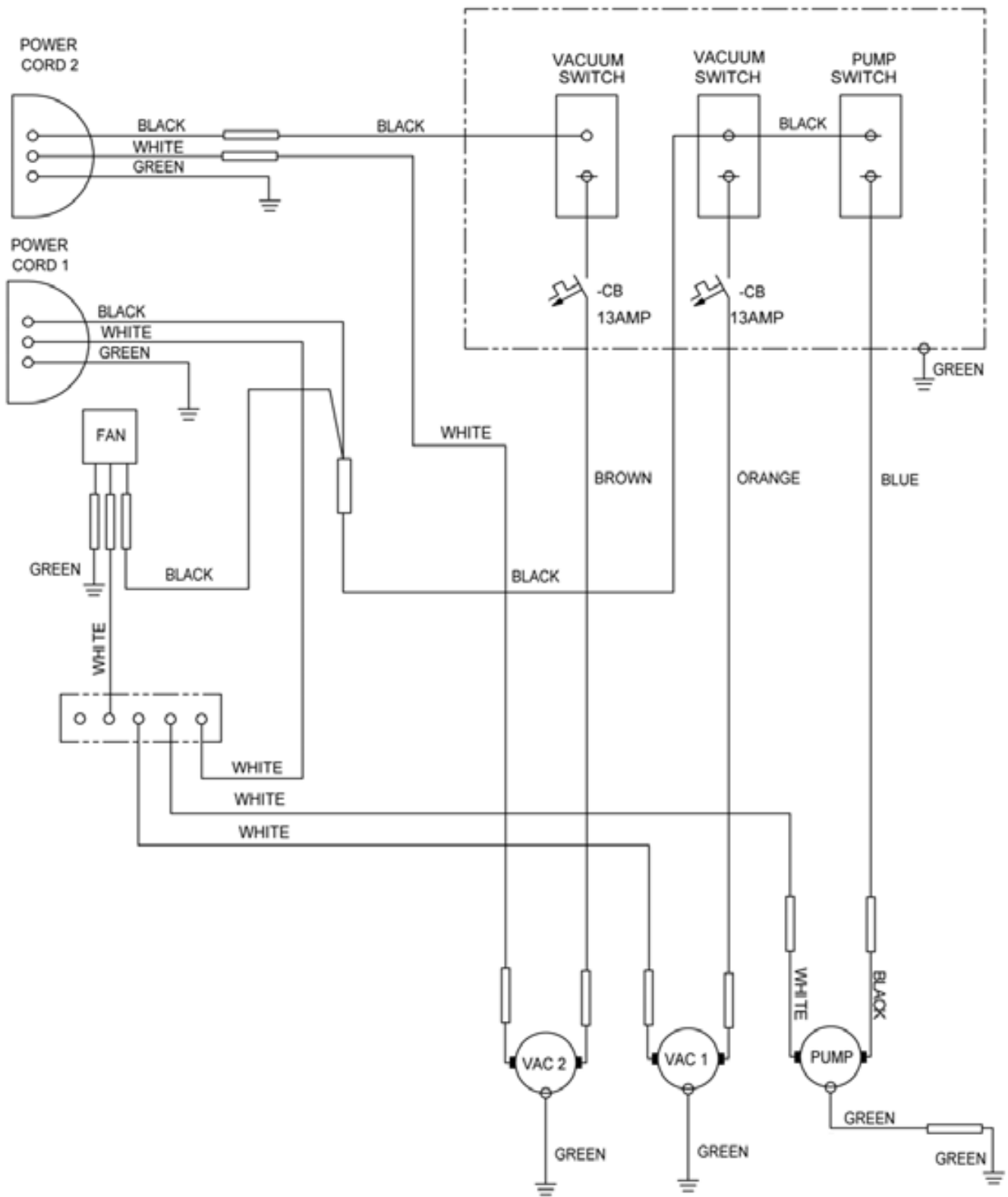


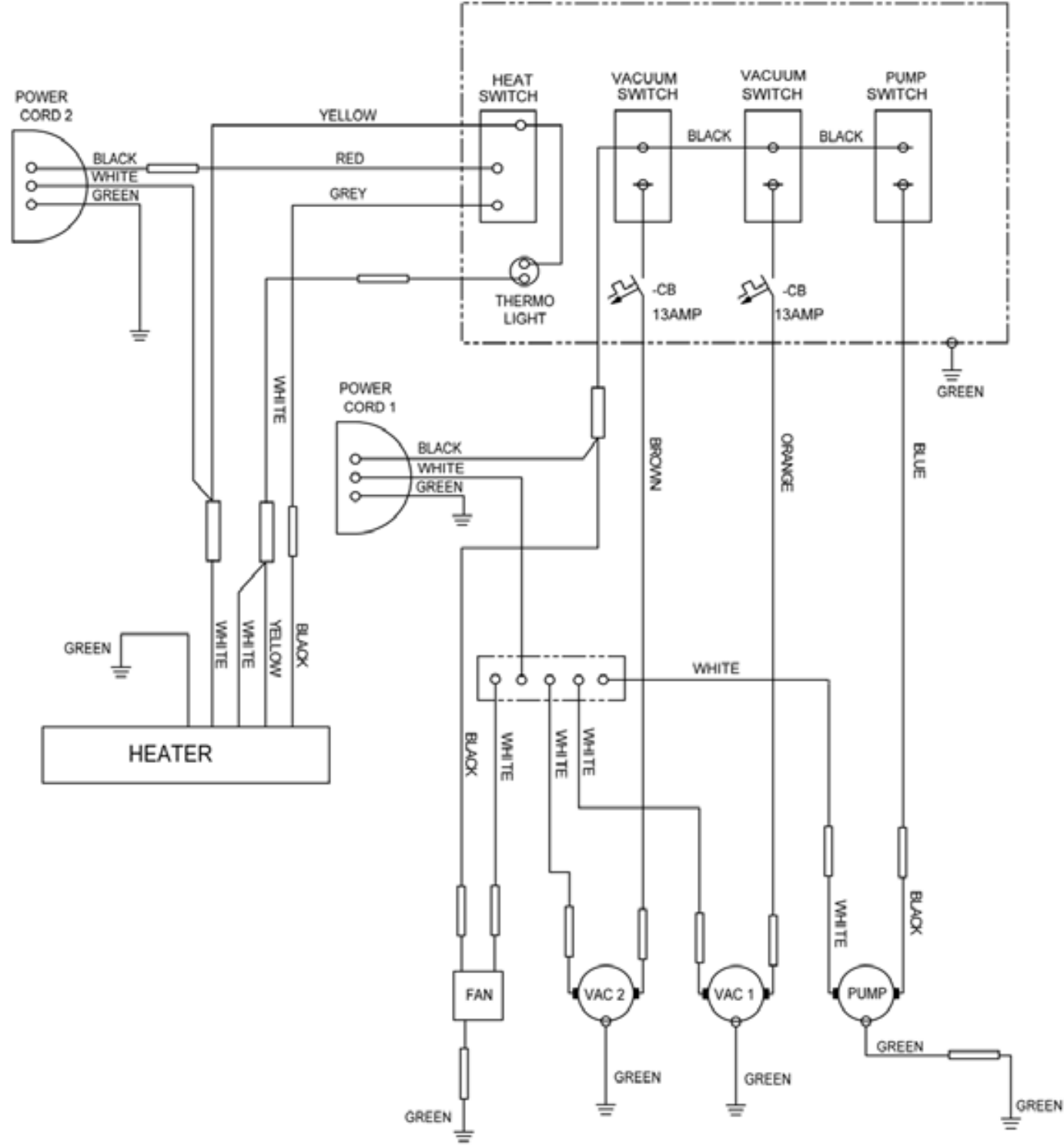
| REF | PART NO. | DESCRIPTION | NOTES: |
|-----|----------|------------------------------|--------|
| 1 | 400-135 | Locknut, 1/4 x 20 Nylon Zinc | |
| 2 | 410-221 | MS, 10-32 1-1/2 RH Soc | |
| 3 | 425-020 | Clamp, #32 | |
| 4 | 415-120 | FW, 1/4 Zinc | |
| 5 | 415-115 | FW, #10 SS | |
| 6 | 355-220 | Manifold, Dual Vacuum | |
| 7 | 475-072 | Gasket, Vacuum Manifold | |
| 8 | 405-065 | 6" Bolt | |
| 9 | 410-136 | SMS, 8 x 3/4 | |
| 10 | 570-020 | Vac Hose 2" | |
| 11A | 355-300 | Vac , 2-Stage | |
| 11B | 355-305 | Vac , 3-Stage | |
| 12A | 355-310 | Housing, Vac Motor, 2-Stage | |
| 12B | 355-315 | Housing, Vac Motor, 3-Stage | |

Wiring - 2 Stage Vacuum

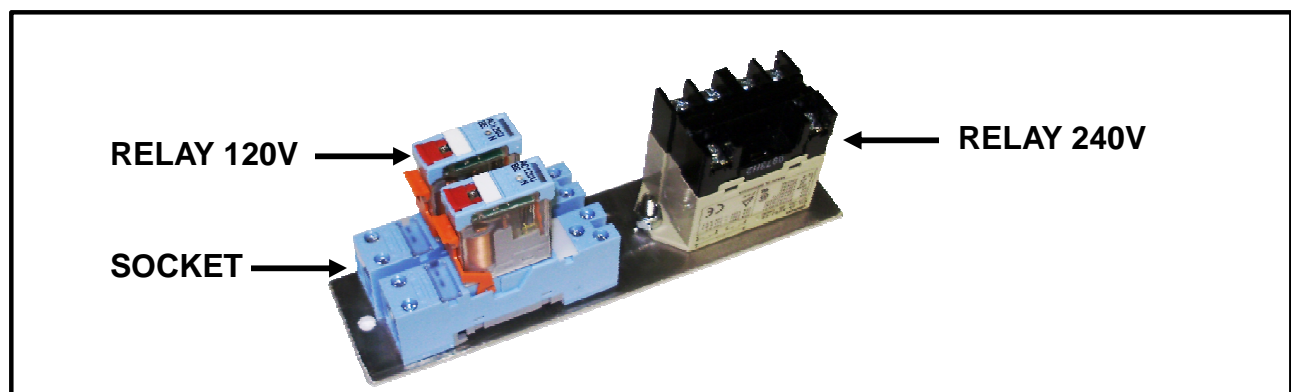


Wiring - 3 Stage Vacuum





**WARRIOR 100 MODEL W/ OPTIONAL
CIRCUIT INDICATOR**

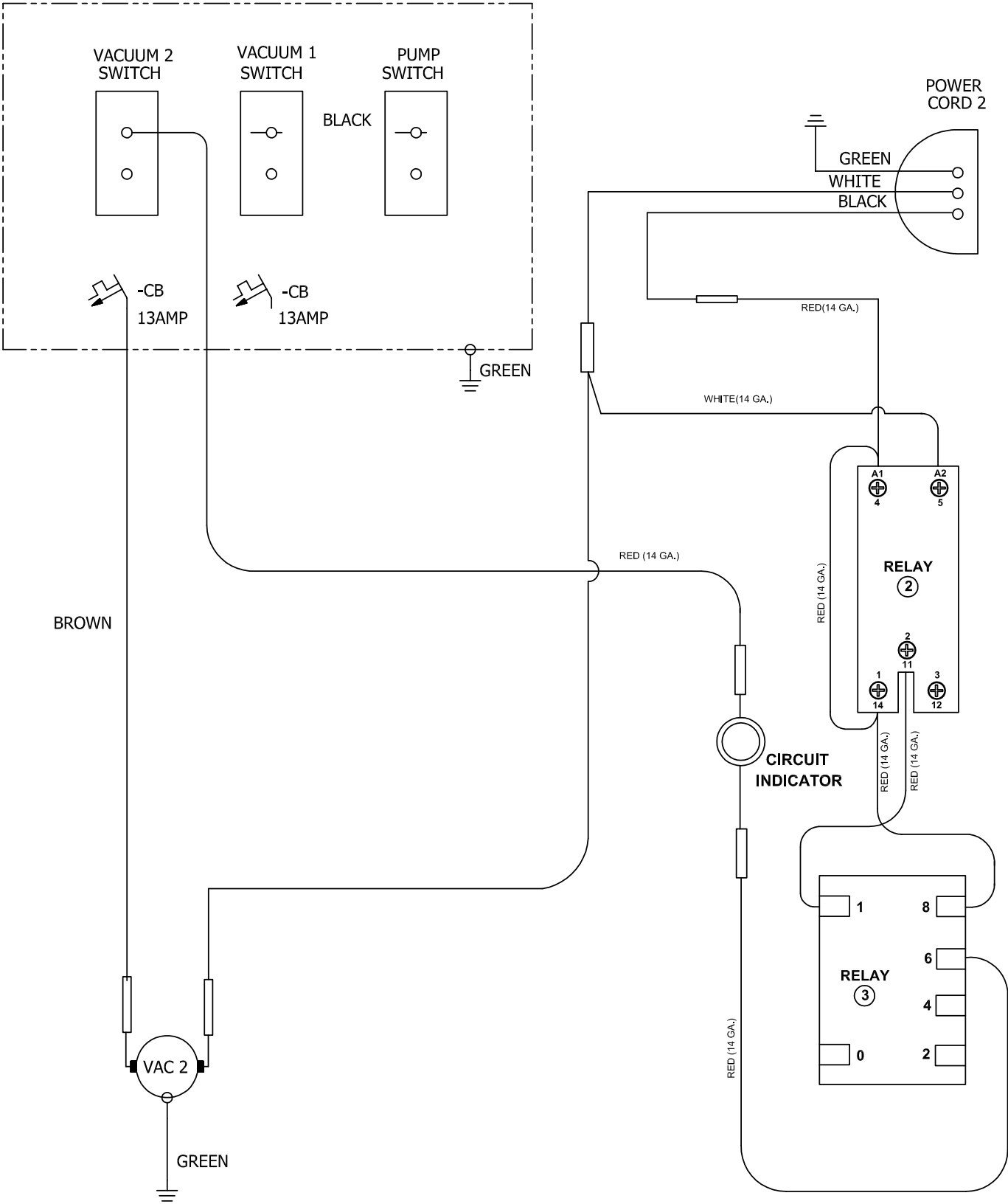


CIRCUIT INDICATOR PARTS LIST

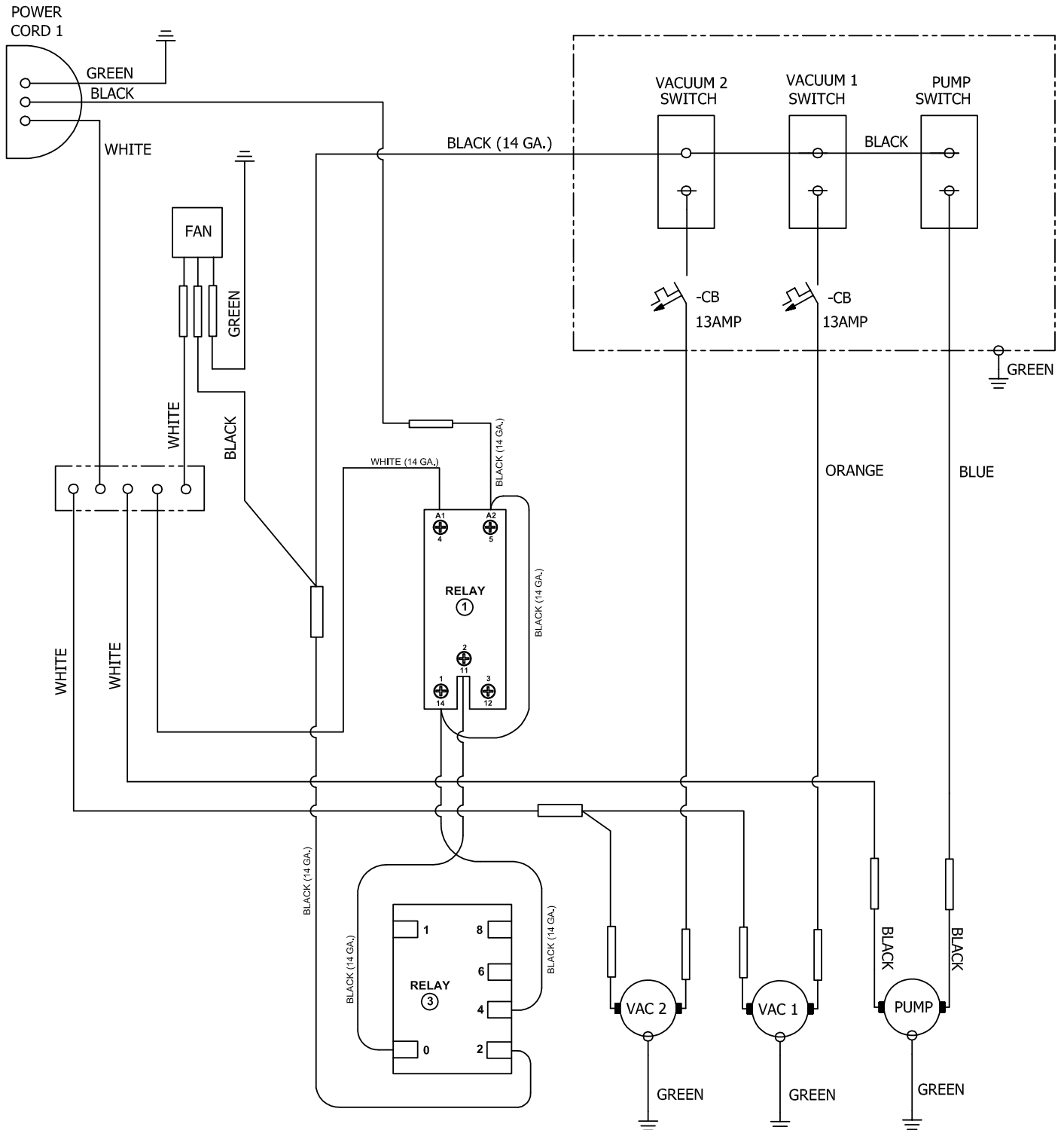
| REF | PART NO. | DESCRIPTION | NOTES: |
|-----|----------|---------------|--------|
| 1 | 845-036 | Plate | |
| 2 | 320-111 | Lamp | |
| 3 | 305-057 | Relay 120V | |
| 4 | 305-058 | Socket | |
| 5 | 305-059 | Relay 240V | |
| 6 | 703-108 | Decal | |
| 7 | 465-045 | Relay Bracket | |

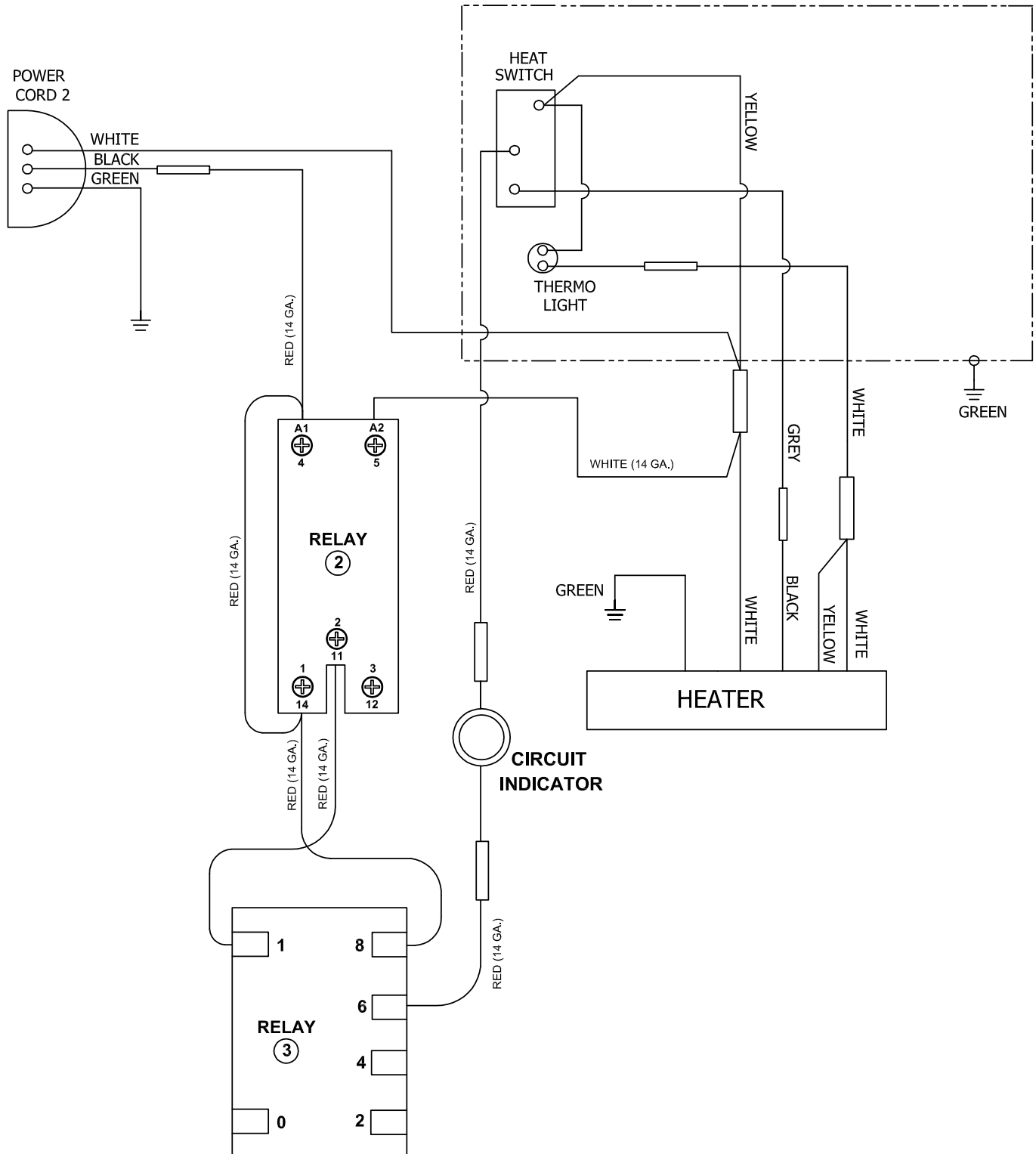
[illegible]

W10 2-3 STAGE VAC W/ OPTIONAL CIRCUIT INDICATOR WIRING PAGE 2



W10 HEATER MATE W/ OPTIONAL CIRCUIT INDICATOR WIRING PAGE 1



POWER
CORD 2



WARRANTY REGISTRATION / DELIVERY ACCEPTANCE

This form must be completed and returned to Esteam Cleaning Systems to activate your warranty.

Esteam would like to take this opportunity to point out a few operating and safety recommendations for your consideration.

* All units cords have a ground plug pin for your safety, never remove or operate any equipment if the ground pin on the plug has been removed.

* Defoamer is to be used in all machines. Improper use of chemicals will void warranty. Drycleaning solvents cannot be used in any Esteam extractors.

* Do not over fill recovery tanks as this will damage the vacuum motors. Vacuum motors showing any signs of moisture contamination will not be covered under warranty.

Model # _____ Serial # _____

Name: _____

Address: _____

City: _____ Province/State: _____

Postal Code/Zip: _____ Date of Purchase: _____
Month / Day / Year

Purchased From: _____

By signing this form I _____, accept the terms and conditions of the warranty.
(print)

I have been fully instructed in the safe operation and use of this equipment.

Signed: _____ Date: _____

Mail Warranty Registration / Delivery Acceptance to:

Esteam Manufacturing Ltd.
3750-19th Street NE
Calgary, Alberta, Canada
T2E 6V2

Or Fax to:
(403) 291 - 0546

ESTEAM® CLEANING SYSTEMS

Warrior Extractor Warranty

NOTICE: REVIEW THIS WARRANTY CAREFULLY AS THIS DOCUMENT CONTAINS LIMITATIONS AND EXCLUSIONS.

PART I:

Esteam Manufacturing Ltd. (hereinafter referred to as "Esteam") warrants each new Warrior Extractor, subject to the limitations as defined in the specific details of its warranty coverage defined below.

LIMITED LIFETIME HOUSING WARRANTY COVERAGE:

Esteam warrants the Warrior Polyethylene Machine Housing Unit to be free from defects in material and workmanship (including cracking, leaking or deterioration) for the life of the unit, expressly subject to the limitations stated herein.

In the event a defect occurs in a Warrior Housing Unit within ten years of receipt by the original customer, Esteam will, if satisfied on its examination that the failure is due to defective material or workmanship, repair or replace the Warrior Housing Unit, at no cost to the original customer, other than as maybe provided for in this warranty.

In the event a defect occurs in a Warrior Housing Unit subsequent to five years (and thereafter for ten years) of receipt by the original customer; Esteam will, if satisfied on its examination, that the failure is due to defective material or workmanship, provide to the original customer only, a new Housing Unit, at 50% of the then published retail pricing basis, for the remainder of the ten years, used by Esteam.

90 DAY LIMITED WARRANTY COVERAGE:

Esteam warrants all switches, vacuum hoses and solution hoses to be free from defects in material and workmanship, for any defect occurring within 90 days of receipt by the original customer of the Warrior Extractor; and further subject to the limitations stated below. 90 day on labor, subject to Esteam's approval; hourly labor credit is set by Esteam.

12 MONTH WARRANTY COVERAGE:

Subject to the Limited Lifetime Warranty and the 90 Day Limited Warranty; Esteam warrants all remaining items on the Warrior Extractor to be free from defect in material or workmanship (excluding any labor charges) for a period of 12 months from date of receipt of the unit by the original customer; and further subject to the limitations stated below.

PART II - REPLACEMENT PARTS (UNDER WARRANTY)

Replacement warranty parts will be genuine Esteam parts, or parts of similar kind and quality.

All replacement warranty parts are warranted to be free from defects in materials or workmanship from the date of the original unit purchase for the balance of the original warranty period namely: 90 days, 12 months, or the Lifetime, whichever is applicable; all in accordance with the terms of Part I, of this warranty.

PART III - LIMITATIONS ON WARRANTY COVERAGE

WHAT IS NOT COVERED:

Notwithstanding any other term or covenant of Esteam contained herein, the following provisions shall apply:

- (i) No warranty is provided for any Esteam product which has failed as a result of freezing, fire, misuse, alteration, improper amps or voltage, accidental damage, improper maintenance, unauthorized repairs, alterations, abuse, neglect or operation of a Esteam product not expressly recommended or contemplated by Esteam; and
- (ii) No warranty is provided for mechanical or electrical breakdown caused by scale, hard water buildup, improper use of chemicals or resins, damage due to environmental conditions, and acts of God, or other events beyond the control of Esteam; and
- (iii) No warranty is provided for mechanical or electrical breakdown or failure of an Esteam product resulting from ordinary wear and tear, or the consequences thereof; including but not limited to the gradual reduction of the operating performance of the product. The determination of what is or is not ordinary wear and tear is at the sole discretion of Esteam; and
- (iv) No warranty is provided for damage caused by the failure of non-warranted parts and/or accessories, even if warranted parts are damaged as a result of the failure of a non-warranted part; and
- (v) No warranty is provided for damage resulting from failure by the customer to maintain scheduled maintenance requirements. The Esteam system has many parts which must either be replaced or checked for wear on a regular basis; including but not limited to replacement filters and lubricants. This system requires regular maintenance, service and attention by the customer; and
- (vi) No warranty is provided as to any extra expenses incurred by the customer, including but not limited to economic, incidental, consequential loss or damage (e.g. all labour charges, rental equipment, down time, lodging, commercial or business loss of any nature or kind due to product failure); whether direct or

- indirect, exemplary or punitive damage or loss, and whether in contract, tort or otherwise; and
- (vii) No warranty is provided as to failure of any cosmetic item or finish, labeling, silk screening, decals, paint, trim or other similar decorative items.
 - (viii) Brass, rubber and synthetic rubber parts (e.g. "O" rings, diaphragms, gaskets, seals, grommets) are considered expendable in normal use, and are therefore not included in any warranty by Esteam.

PART IV - EXCLUSION OF LIABILITY

Esteam makes no warranties or representations, either expressed or implied, oral or written, in fact, or by operation of law, or otherwise, except as expressly stated herein as to the 90 day Limited, 12 month and Lifetime Extended warranties. Esteam, its officers, directors, agents, dealers and its affiliates (and their respective officers, directors, agents and dealers) shall not be liable to the customer nor to any party for any liability, including without limitation, strict liability, liability for loss, injury or damage due directly or indirectly to the use or operation of the Esteam product; consequential, exemplary and/or punitive damage or loss, whether in contract, tort, or otherwise.

PART V - RETURN GUIDELINES

Defective items must be replaced through a local Esteam Distributor. Replacement parts will be sent via prepaid regular ground service to the distributor. The defective part must be returned F.O.B. factory within 30 days including a letter providing the machine's serial number, date of purchase, material return authorization number, and customer name. If applicable, credit will be issued after the item has been evaluated by Esteam. Failure to comply with return policy will void the warranty on that item.

PART VI - CREDIT POLICY

All customers purchasing parts through an Esteam distributor must arrange credit directly with that distributor.

PART VII - OUTSIDE SOURCE WARRANTY REPAIRS

At the sole discretion of Esteam, it may be necessary to perform warranty/repairs at an outside source. An estimate must be submitted to and approved by Esteam prior to work being performed. Failure to do so will result in denial of your warranty claim.

PART VIII - TRANSFERABILITY

This warranty is not transferable to any subsequent owner.

PART IX - NOTICE - CUSTOMER OBLIGATIONS

- (i) Your responsibility as a customer includes but is not limited to cleaning, lubricating, seasonal maintenance (e.g. winterizing), replacement of worn parts and all regular scheduled or unscheduled maintenance.
- (ii) Any claim for warranty must be presented to Esteam or its authorized dealer, prior to the expiration of the time limitations specified and not thereafter, otherwise any warranty is void.
- (iii) Notwithstanding the generality of the foregoing customer obligations, Esteam does hereby bring to the attention of the customer, these specific maintenance operating requirements of the Warrior Extractor to validate its warranty:

(a) **Chemical Warning:**

Any improper use of chemicals shall void any Esteam warranty and thusly exclude any liability by Esteam. No dry cleaning chemical may be used in a Warrior Extractor; - as any such use may result in fire or pump/motor damage. A defoamer solution must be used by customer to limit foaming in the recovery tank.

(b) **Vacuum Motors:**

Require use of a defoamer. A vacuum motor showing moisture contamination on interior components shall void any warranty by Esteam.

(c) **Pumps:**

All pumps require daily flushing with clean water after use.

The foregoing constitutes Esteam's entire warranty and no other warranty, liability, contingency or responsibility, direct, indirect, consequential or in any other way connected with the sale or operation of Esteam machines or chemical product is expressed or implied.

**Warrior Extractor Warranty
Esteam Manufacturing Ltd. 3750-19th Street NE
Calgary, AB T2E 6V2 1-800-653-8338**