

# **ESTEAM CLEANING SYSTEMS**

**E 2 5 0**

## **OWNER'S MANUAL**

Congratulations on your selection of a new Esteam E250 soil extractor built in Canada by “Esteam Cleaning Systems”. Our goal has been to produce the best high performance line of carpet cleaning equipment on the market.

Reading your owners manual will help to achieve maximum benefits from your purchase.

# TABLE OF CONTENTS

	Page No.
Specifications	2
Maintenance	3
Safety Information	3
Operating Instructions	5
Trouble Shooting	5
Schematic	6
Warranty Registration	11
Warranty	12

## **SPECIFICATIONS**

### **ESTEAM E250**

ELECTRICAL	Single Cord 115(or 220) volt AC 15 amp
VACUUMS	2 stage vacuum motor
PUMP	50 PSI Oscillating pump
VACUUM LIFT	75" of water lift
SOLUTION TANK CAPACITY (clean water)	2.5 gallons
RECOVERY TANK CAPACITY	2.5 gallons
LENGTH	15.5 inches
WIDTH	9 inches
HEIGHT	18.5 inches
WEIGHT	20 lbs.
VACUUM/SOLUTION HOSE (C/W molded hand tool)	8 Feet

## **MAINTENANCE**

### **DAILY**

- Clean screen inside the recovery tank
- Rinse out recovery tank after use.
- Rinse out pump with clean water at conclusion of work day.
- Clean poly housing with mild soap and water.

### **MONTHLY**

- Clean air inlet and check exhaust port.

### **YEARLY**

- We recommend that your unit be inspected by a qualified service technician once a year.

### **PREVENTATIVE MAINTENANCE**

- Never store this unit in a place where there is a possibility of the temperature dropping below 0°C (32°F).

### **SAFETY INFORMATION**

1. Prior to inspection or repair of this machine, disconnect all electrical cords rendering the machine powerless. Failure to do so could result in serious or fatal injury.
2. Inspect unit daily for worn or damaged components. E.g. frayed cord, loose plug, or a plug with missing ground pin, etc.
3. This unit should only be operated when in an upright position on a level surface.
4. Do not operate unit unless it is properly grounded in a 3 pin grounded outlet. Never bend or remove ground pin from plug.
5. Ensure filters and screens are free from lint or dirt.
6. Do not run unit if vacuum motors or pump are wet. Allow sufficient time for motors to dry before plugging unit in.
7. Do not use solvent based cleaning products in this extractor.
8. Keep air inlets and exhaust ports free from obstructions. Blocked air inlets or exhaust ports can cause the unit to over heat.
9. Do not use solution or recovery tanks for storing hoses, cords, or accessories.
10. When using electrical equipment around water it is important to wear rubber soled shoes and keep machine properly grounded at all times. Failure to do so could result in a fatal electric shock.

# E250 MODELS



## OPERATING INSTRUCTIONS

### 1. FILLING THE E250

- a) Release draw latch and remove recovery tank.
- b) Lift cover to access lower solution tank.
- c) Add water and chemicals to solution tank.
- d) Replace recovery tank by inserting tab into slot at the rear of the unit and then lock the draw latch.

### 2. OPERATING THE E250

- a) Attach the solution feed line to the female quick disconnect.
- b) Attach vacuum hose to the vacuum inlet on the recovery tank.
- c) Turn the switch at the rear of the unit to activate both the vacuum motor and pump (allow approximately 30 seconds for the pump to prime).
- d) Use the hand tool in a normal fashion to clean carpet or upholstery.

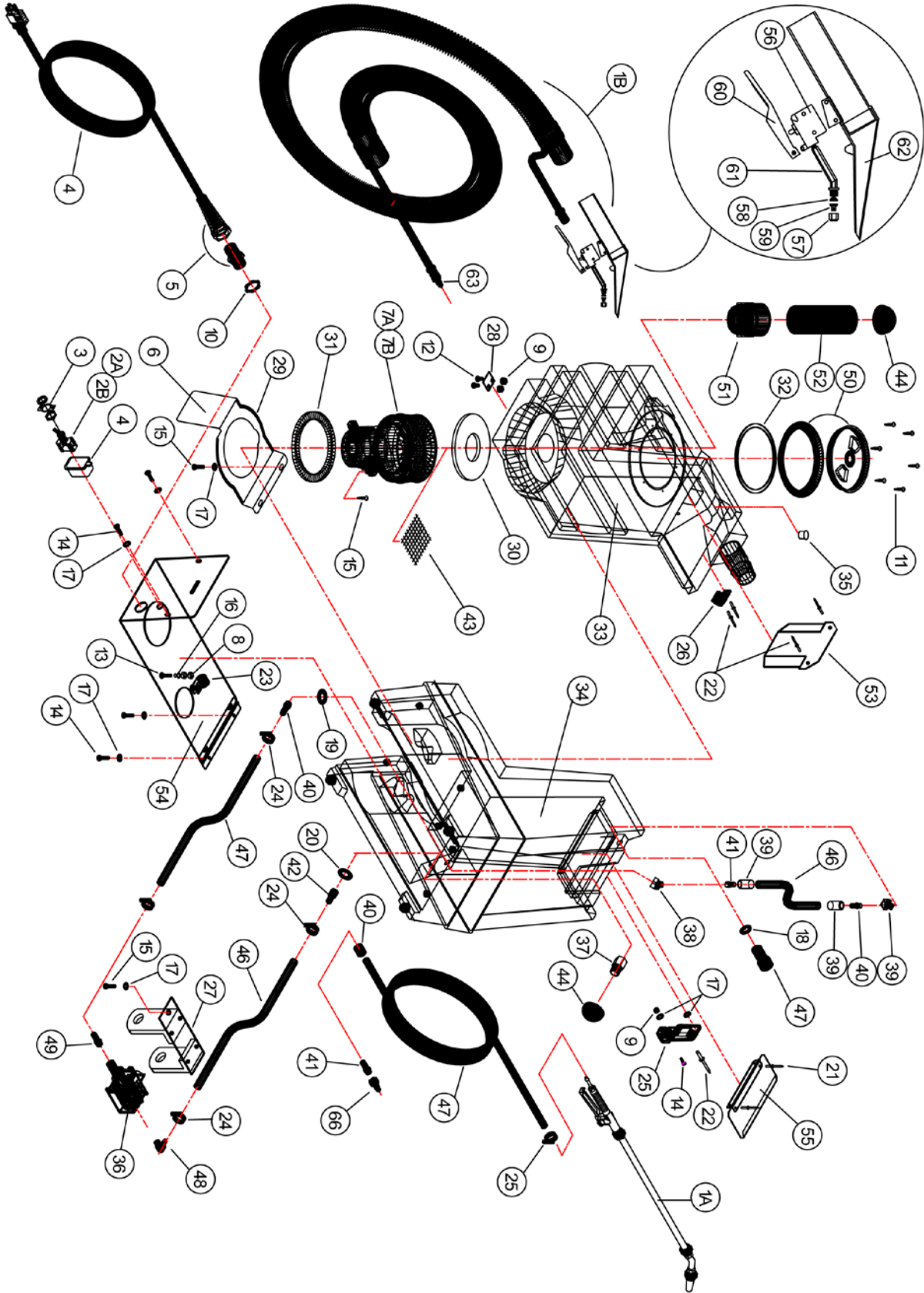
### 3. CLEANING THE RECOVERY TANK

- a) To empty the recovery tank, release the draw latch and remove from the lower portion of the machine.
- b) Pour out the dirty solution through the vacuum inlet.
- c) When finished with the cleaning operation, unscrew the clear plastic cover on the recovery tank and flush out any residual dirt from the recovery tank.

### 4. BASIC TROUBLESHOOTING

- a) If pump does not prime depress lever on the hand tool to release air lock.
  - i) If this does not work, "power prime" the pump by detaching the vacuum hose from the hand tool and using the vacuum to draw solution through the solution spray jet while depressing the lever on the hand tool.
- b) If solution flow is reduced or if spray is weak:
  - i) Check for low solution level in solution tank.
  - ii) Check spray jet from hand tool and check for blockage.
  - iii) Check for debris in all solution lines:
    - a) Feed line to pump.
    - b) Output line from pump to Q/D.
    - c) Solution line from Q/D to hand tool.
- c) If recovery of dirty solution is inadequate:
  - i) Check for dirty filter screen in recovery tank.
  - ii) Check for blockage in hand tool or in vacuum hose.
  - iii) Remove recovery tank and inspect gasket between vacuum and recovery tank; replace if cracked or integrity of seal is broken.

# E250 MODELS



## E 250 SPOTTER ALL MODELS

REF	PART NO.	DESCRIPTION	NOTES:
1A	250-215	Spray wand	E250-05
1B	255-201	Tool & hose ASSY	E250; E250-05; E250-20
2A	305-205	Switch, Toggle ON/OFF/ON	E250-05
2B	305-210	Switch, Toggle 110v / 220v	
3	305-225	Switch Plate ON/OFF	
4	315-015	Cord, 20' Black 14/3 SJTW-A	
5	335-015	Strain Relief, 16 Gauge	
6	355-010	Vac Bracket	
7A	355-125	Vacuum 110v	E250; E250-05
7B	355-130	Vacuum 220v	E250-20
8	400-130	Locknut, 10 x 24 Nylon SS	
9	400-148	Locknut, 4 x 40 Nylon Zinc	Not Shown
10	400-165	Locknut, 1/2"	
11	410-125	SMS, 8 x 5/8 Pan Rob. S.S.	
12	410-155	MS, 10-24 x 3/4 Hex SS	
13	410-160	MS, 10-24 x 3/4 Pan PH SS	
14	410-205	MS, 10-32 x 1/2 Panphil SS	
15	410-225	SMS, 10 X 1/2 Pan Rob. Zinc	
16	415-052	Star Washer #10	
17	415-115	FW, 10 SS	
18	415-135	FW, 3/8 SS	
19	415-138	3/8 Fender Washer SS	
20	415-156	FW 1/2 SS (1 3/8 OD)	
21	420-055	Rivet, AL/AL #46	
22	420-151	Rivet, AL/AL Fullysealed #68	
23	425-100	Clamp 1/2 Tube Plastic	
24	425-115	Clamp Hose Silicone	
25	445-015	Latch, Machine	
26	445-020	Latch, Striker	
27	465-025	BRKT, Spotter Pump	
28	465-030	BRKT, Rec. Tank	
29	475-020	U - CHNL Gasket	
30	475-075	Gasket, Vac To Rec Tank	
31	475-080	Gasket, Vac to MNTG Plate	
32	475-120	Gasket 4" Access Cover - Clear	
33	495-301	Rec Tank	
34	495-307	Sol Tank	
35	498-055	Plug 1/2" Nylon	
36	515-500	Pump 110V	E250; E250-05
37A	515-505	Pump 220V	E250-20
37B	555-002	ADPT 1/4 M x 1/4 FM	
38	555-180	Elbow 45, 1/8" Street Extruded	
39	555-252	Ferrule, 1/4" Nylon Braid	



40	555-350	Hose Barb, 1/4 Barb x 1/8 MPT	
41	555-352	Hose Barb, 1/4 Barb x 1/8 FPT	
42	555-356	Hose Barb, 1/4 Barb x 1/4 MPT	
43	560-015	Screen, Plain (HC)	
44	560-030	Screen, Acorn	
45	560-120	Strainer	
46	572-100	Clear Braided Hose 1/4"	
47	580-100	Q.C. 1/8 FM (Close)	
48	585-100	1/4 x 1/8 HB x MPT 90 (Nylon)	
49	585-105	1/4 x 1/8 HB x MPT (Nylon)	
50	585-205	Clear Cover 4" C/W Ring	
51	590-415	PVC ADPT 1 1/2", S x MPT	
52	595-005	ABS Pipe, 1 1/2"	
53	845-006	Baffle	
54	845-070	Access Panel	
55	845-075	Solution Tank Cover	
56	535-122	Valve	
57	538-515	Nut	
58	560-235	Filter	
59	562-110	Jet	
60	566-005	Trigger	
61	582-010	Elbow	
62	830-920	Tool Head Plastic	
63	580-105	Q.C 1/8 Male (Close)	

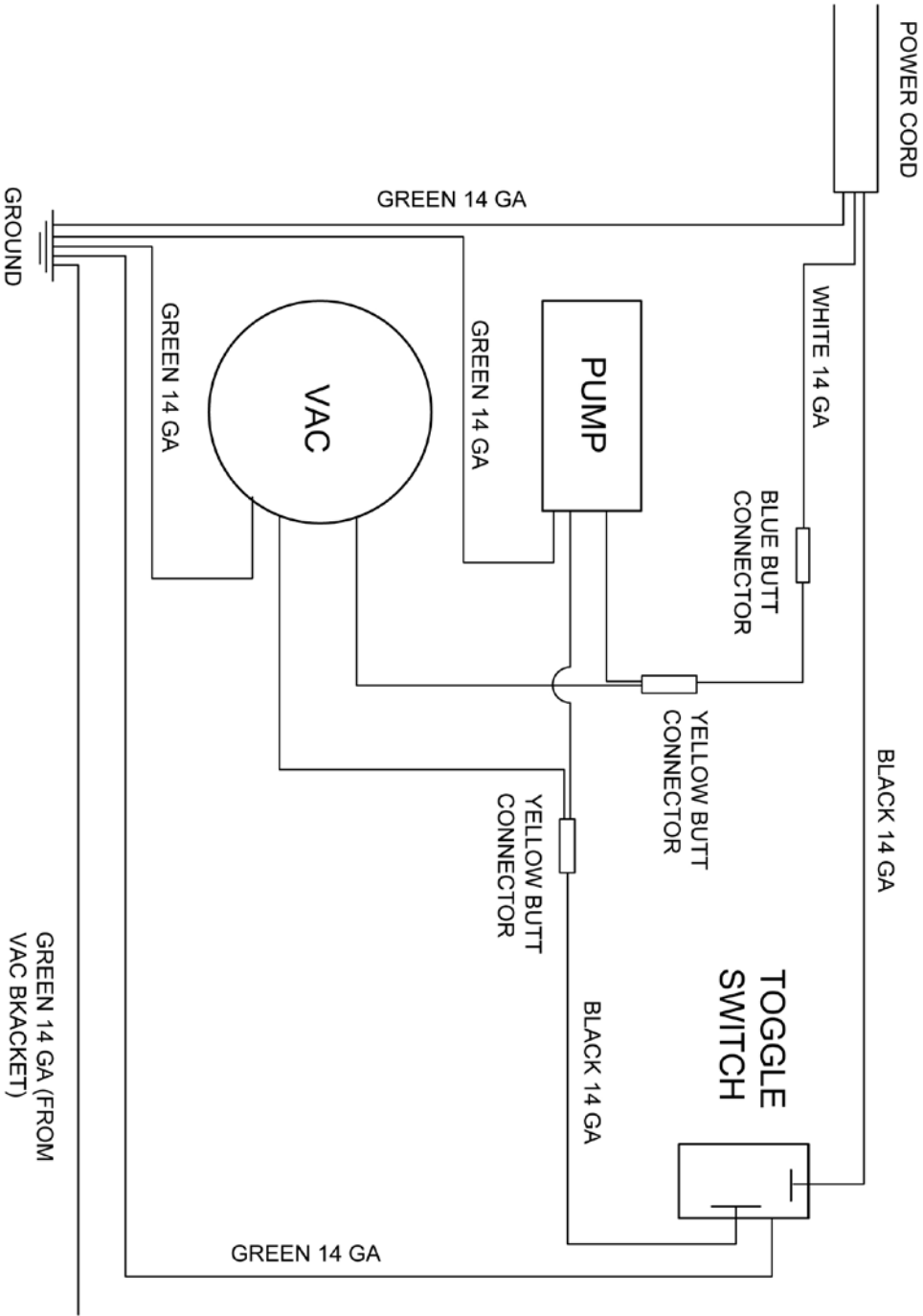
NOTE: E250 MODELS

E250 : E250 SPOTTER C/W HAND TOOL & HOSE SET

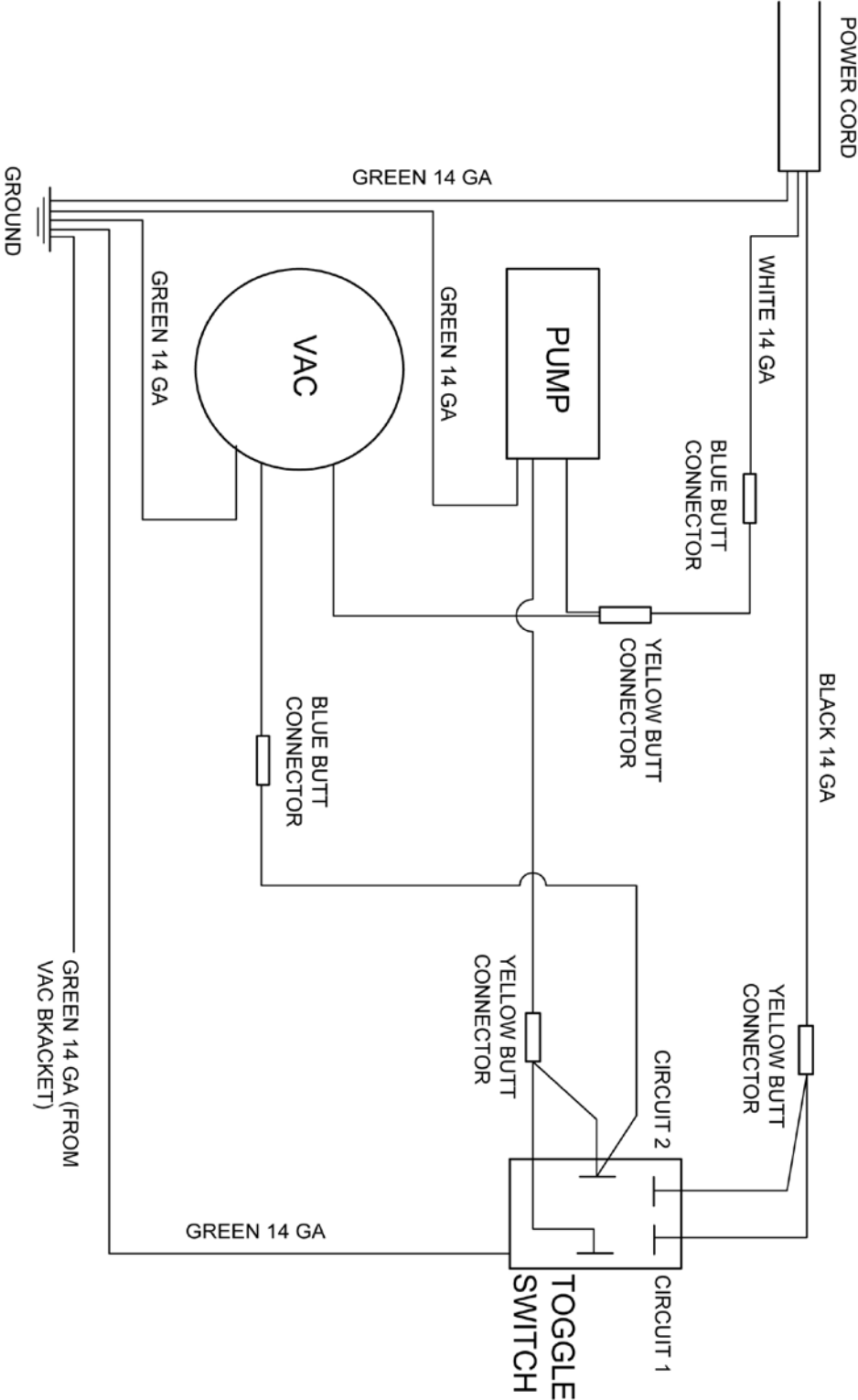
E250-05 : E250 SPOTTER C/W SPRAY OPTION, TOOL & HOSE SET

E250-20 : E250 SPOTTER 220V C/W HAND TOOL & HOSE SET

# E250 110V & 220V WIRING



# E250 C/W SPRAY OPTION WIRING





## WARRANTY REGISTRATION / DELIVERY ACCEPTANCE

This form must be completed and returned to Esteam Cleaning Systems to activate your warranty.

Esteam would like to take this opportunity to point out a few operating and safety recommendations for your consideration.

\* All units cords have a ground plug pin for your safety, never remove or operate any equipment if the ground pin on the plug has been removed.

\* Defoamer is to be used in all machines. Improper use of chemicals will void warranty. Drycleaning solvents cannot be used in any Esteam extractors.

\* Do not over fill recovery tanks as this will damage the vacuum motors. Vacuum motors showing any signs of moisture contamination will not be covered under warranty.

Model # \_\_\_\_\_ Serial # \_\_\_\_\_

Name: \_\_\_\_\_

Address: \_\_\_\_\_

City: \_\_\_\_\_ Province/State: \_\_\_\_\_

Postal Code/Zip: \_\_\_\_\_ Date of Purchase: \_\_\_\_\_  
Month / Day / Year

Purchased From: \_\_\_\_\_

By signing this form I \_\_\_\_\_, accept the terms and conditions of the warranty.  
(print)

I have been fully instructed in the safe operation and use of this equipment.

Signed: \_\_\_\_\_ Date: \_\_\_\_\_

Mail Warranty Registration / Delivery Acceptance to:

Esteam Manufacturing Ltd.  
3750-19th Street NE  
Calgary, Alberta, Canada  
T2E 6V2

Or Fax to:  
(403) 291 - 0546

# **ESTEAM® CLEANING SYSTEMS**

## **E-Series Extractor Warranty**

### **E1700, E1000, E600, E250**

**NOTICE: REVIEW THIS WARRANTY CAREFULLY AS THIS DOCUMENT CONTAINS LIMITATIONS AND EXCLUSIONS.**

#### **PART I:**

Esteam Manufacturing Ltd. (hereinafter referred to as "Esteam") warrants each new E-Series Extractor, subject to the limitations as defined in the specific details of its warranty coverage defined below.

#### **LIMITED LIFETIME HOUSING WARRANTY COVERAGE:**

Esteam warrants the E-Series Polyethylene Machine Housing Unit to be free from defects in material and workmanship (including cracking, leaking or deterioration) for the life of the unit, expressly subject to the limitations stated herein.

In the event a defect occurs in a E-Series Housing Unit within five years of receipt by the original customer, Esteam will, if satisfied on its examination that the failure is due to defective material or workmanship, repair or replace the E-Series Housing Unit, at no cost to the original customer, other than as maybe provided for in this warranty.

In the event a defect occurs in a E-Series Housing Unit subsequent to five years (and thereafter for life) of receipt by the original customer; Esteam will, if satisfied on its examination, that the failure is due to defective material or workmanship, provide to the original customer only, a new Housing Unit, at 50% of the then published retail pricing basis, used by Esteam.

#### **90 DAY LIMITED WARRANTY COVERAGE:**

Esteam warrants all switches, vacuum hoses and solution hoses, heatermate thermostats and thermo cut-outs to be free from defects in material and workmanship, for any defect occurring within 90 days of receipt by the original customer of the E-Series Extractor; and further subject to the limitations stated below. 90 day on labor, subject to Esteam's approval; hourly labor credit is set by Esteam.

#### **12 MONTH WARRANTY COVERAGE:**

Subject to the Limited Lifetime Warranty and the 90 Day Limited Warranty; Esteam warrants all remaining items on the E-Series Extractor to be free from defect in material or workmanship (excluding any labor charges) for a period of 12 months from date of receipt of the unit by the original customer; and further subject to the limitations stated below.

## **PART II - REPLACEMENT PARTS (UNDER WARRANTY)**

Replacement warranty parts will be genuine Esteam parts, or parts of similar kind and quality.

All replacement warranty parts are warranted to be free from defects in materials or workmanship from the date of the original unit purchase for the balance of the original warranty period namely: 90 days, 12 months, or the Lifetime, whichever is applicable; all in accordance with the terms of Part I, of this warranty.

## **PART III - LIMITATIONS ON WARRANTY COVERAGE**

### **WHAT IS NOT COVERED:**

Notwithstanding any other term or covenant of Esteam contained herein, the following provisions shall apply:

- (i) No warranty is provided for any Esteam product which has failed as a result of freezing, fire, misuse, alteration, improper amps or voltage, accidental damage, improper maintenance, unauthorized repairs, alterations, abuse, neglect or operation of a Esteam product not expressly recommended or contemplated by Esteam; and
- (ii) No warranty is provided for mechanical or electrical breakdown caused by scale, hard water buildup, improper use of chemicals or resins, damage due to environmental conditions, and acts of God, or other events beyond the control of Esteam; and
- (iii) No warranty is provided for mechanical or electrical breakdown or failure of an Esteam product resulting from ordinary wear and tear, or the consequences thereof; including but not limited to the gradual reduction of the operating performance of the product. The determination of what is or is not ordinary wear and tear is at the sole discretion of Esteam; and
- (iv) No warranty is provided for damage caused by the failure of non-warranted parts and/or accessories, even if warranted parts are damaged as a result of the failure of a non-warranted part; and
- (v) No warranty is provided for damage resulting from failure by the customer to maintain scheduled maintenance requirements. The Esteam system has many parts which must either be replaced or checked for wear on a regular basis; including but not limited to replacement filters and lubricants. This system requires regular maintenance, service and attention by the customer; and
- (vi) No warranty is provided as to any extra expenses incurred by the customer, including but not limited to economic, incidental, consequential loss or damage (e.g. all labor charges, rental equipment, down time, lodging, commercial or business loss of any nature or kind due to product failure); whether direct or indirect, exemplary or punitive damage or loss, and whether in contract, tort or otherwise; and

- (vii) No warranty is provided as to failure of any cosmetic item or finish, labeling, silk screening, decals, paint, trim or other similar decorative items.
- (viii) Brass, rubber and synthetic rubber parts (e.g. "O" rings, diaphragms, gaskets, seals, grommets) are considered expendable in normal use, and are therefore not included in any warranty by Esteam.

#### **PART IV - EXCLUSION OF LIABILITY**

Esteam makes no warranties or representations, either expressed or implied, oral or written, in fact, or by operation of law, or otherwise, except as expressly stated herein as to the 90 day Limited, 12 month and Lifetime Extended warranties. Esteam, its officers, directors, agents, dealers and its affiliates (and their respective officers, directors, agents and dealers) shall not be liable to the customer nor to any party for any liability, including without limitation, strict liability, liability for loss, injury or damage due directly or indirectly to the use or operation of the Esteam product; consequential, exemplary and/or punitive damage or loss, whether in contract, tort, or otherwise.

#### **PART V - RETURN GUIDELINES**

Defective items must be replaced through a local Esteam Distributor. Replacement parts will be sent via prepaid regular ground service to the distributor. The defective part must be returned F.O.B. factory within 30 days including a letter providing the machine's serial number, date of purchase, material return authorization number, and customer name. If applicable, credit will be issued after the item has been evaluated by Esteam. Failure to comply with return policy will void the warranty on that item.

#### **PART VI - CREDIT POLICY**

All customers purchasing parts through an Esteam distributor must arrange credit directly with that distributor.

#### **PART VII - OUTSIDE SOURCE WARRANTY REPAIRS**

At the sole discretion of Esteam, it may be necessary to perform warranty/repairs at an outside source. An estimate must be submitted to and approved by Esteam prior to work being performed. Failure to do so will result in denial of your warranty claim.

#### **PART VIII - TRANSFERABILITY**

This warranty is not transferable to any subsequent owner.

## **PART IX - NOTICE - CUSTOMER OBLIGATIONS**

- (i) Your responsibility as a customer includes but is not limited to cleaning, lubricating, seasonal maintenance (e.g. winterizing), replacement of worn parts and all regular scheduled or unscheduled maintenance.
- (ii) Any claim for warranty must be presented to Esteam or its authorized dealer, prior to the expiration of the time limitations specified and not thereafter, otherwise any warranty is void.
- (iii) Notwithstanding the generality of the foregoing customer obligations, Esteam does hereby bring to the attention of the customer, these specific maintenance operating requirements of the E-Series Extractor to validate its warranty:

(a) Chemical Warning:

Any improper use of chemicals shall void any Esteam warranty and thusly exclude any liability by Esteam. No dry cleaning chemical may be used in a E-Series Extractor; - as any such use may result in fire or pump/motor damage. A defoamer solution must be used by customer to limit foaming in the recovery tank.

(b) Vacuum Motors:

Require use of a defoamer. A vacuum motor showing moisture contamination on interior components shall void any warranty by Esteam.

(c) Pumps:

All pumps require daily flushing with clean water after use.

(d) Internal Heater Mate:

The internal heater must be flushed with clean water after every use. Any build up of hard water deposits or chemical build up within the internal heater will void any Esteam warranty thusly exclude any liability of Esteam.

The foregoing constitutes Esteam's entire warranty and no other warranty, liability, contingency or responsibility, direct, indirect, consequential or in any other way connected with the sale or operation of Esteam machines or chemical product is expressed or implied.

**E-Series Extractor Warranty**  
**Esteam Manufacturing Ltd. 3750-19th Street NE**  
**Calgary, AB T2E 6V2 1-800-653-8338**