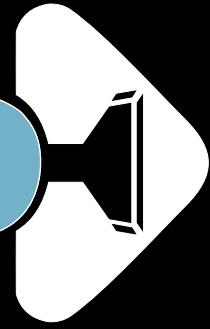


CLEANCO

TRUCKMOUNTS



PROVEN DEPENDABILITY

COMPACT PTO DIRECT DRIVE TRUCKMOUNTS

With over 39 years of refinements and engineering innovation, Cleanco Truckmounts have become known throughout the industry as dependable, reliable, money making workhorses due to quality craftsmanship, extraordinary engineering and user friendly operation.

Quality Craftsmanship

Our systems are built with quality components including a 5CP Cat Pump with adjustable pressure for upholstery, carpet and hard surface cleaning, a Roots Whispair DSL blower producing up to 490 CFM, featuring FloMax Airflow Technology for faster drying times, and the Cleanco multi stage P.T.I. heat exchanger delivering water temperatures up to 240°F for optimal cleaning performance. The power transfer of the Cleanco direct drive unit comes from a solid precision balanced PTO shaft driven by the van engine with soft start engagement technology.

Extraordinary Engineering

Cleanco takes pride in the practical configuration of our equipment. With every Cleanco Compact you have free open cargo space in your van. Using the least amount of cargo space allows room for other equipment required in the daily operation of your business. Strategically placing the equipment in the van also ensures even weight distribution, increases passenger safety and vehicle longevity.

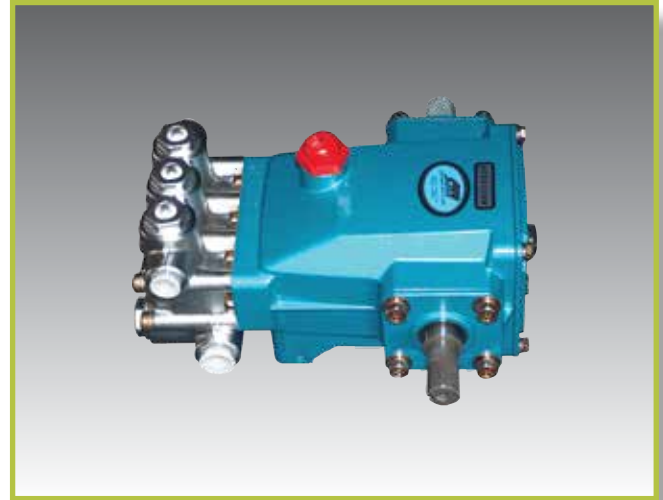
User Friendly Operation

Complete system operation starts with the precisely designed control panel featuring a gauge monitoring package, pressure & temperature controls and a dual speed setting for upholstery, carpet or hard surface cleaning. Unit operation is powered by our E.T.M. (Electronic Throttle Module) which maintains the van engine speed at a consistent RPM, increasing vacuum performance by 30% and reducing fuel consumption to only 1.5 gallons per operating hour.

*As tested in GM installation.

QUALITY

5CP CAT PUMP



- Plunger Water Pump with high temp seals
- 4-5 GPM Volume
- 1200 PSI for Hard Surface Cleaning
- Adjustable Pressure (50-1200 PSI)

CLEANCO P.T.I. (Post Thermal Increase)



With Cleanco's P.T.I. you'll have hot water and plenty of it. The Cleanco P.T.I. is a tube and fin designed heat exchanger that captures the free hot blower exhaust air. The P.T.I. produces working water temperatures up to 240°F.

1-800-653-8338

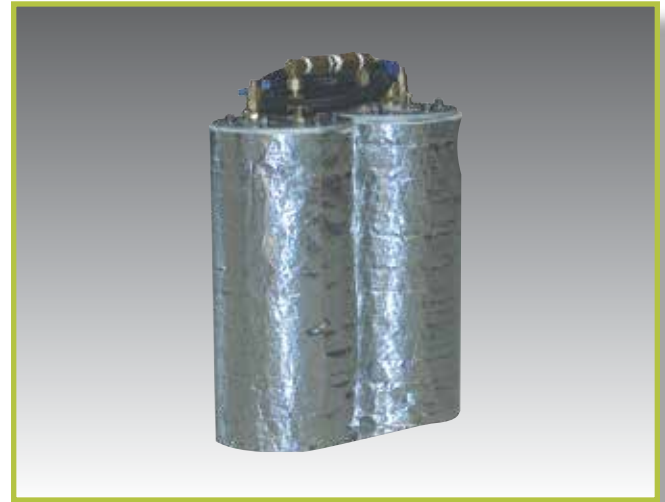
Y CRAFTSMANSHIP

ROOTS WHISPAIR DSL BLOWER



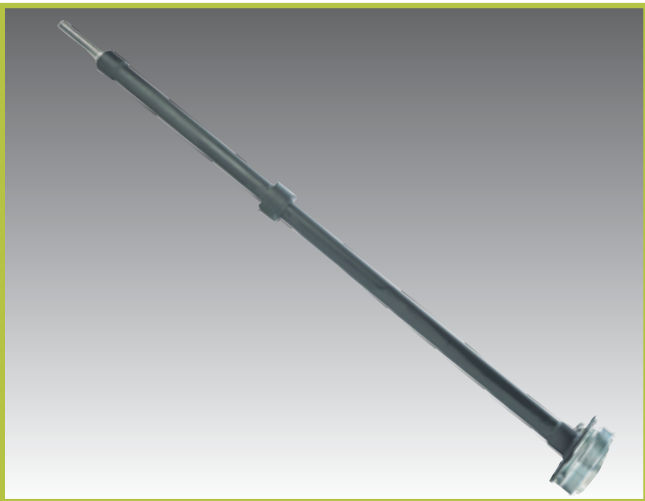
- Whispair Sound Reduction
- Dual Oil Bath, No Grease Fittings
- Twin Lobe

MAXI HEAT DUAL HEAT EXCHANGE



- Aluminum Casing
- High Pressure Copper Coils
- Working Pressure 3000 PSI

PRECISION BALANCE PTO SYSTEM



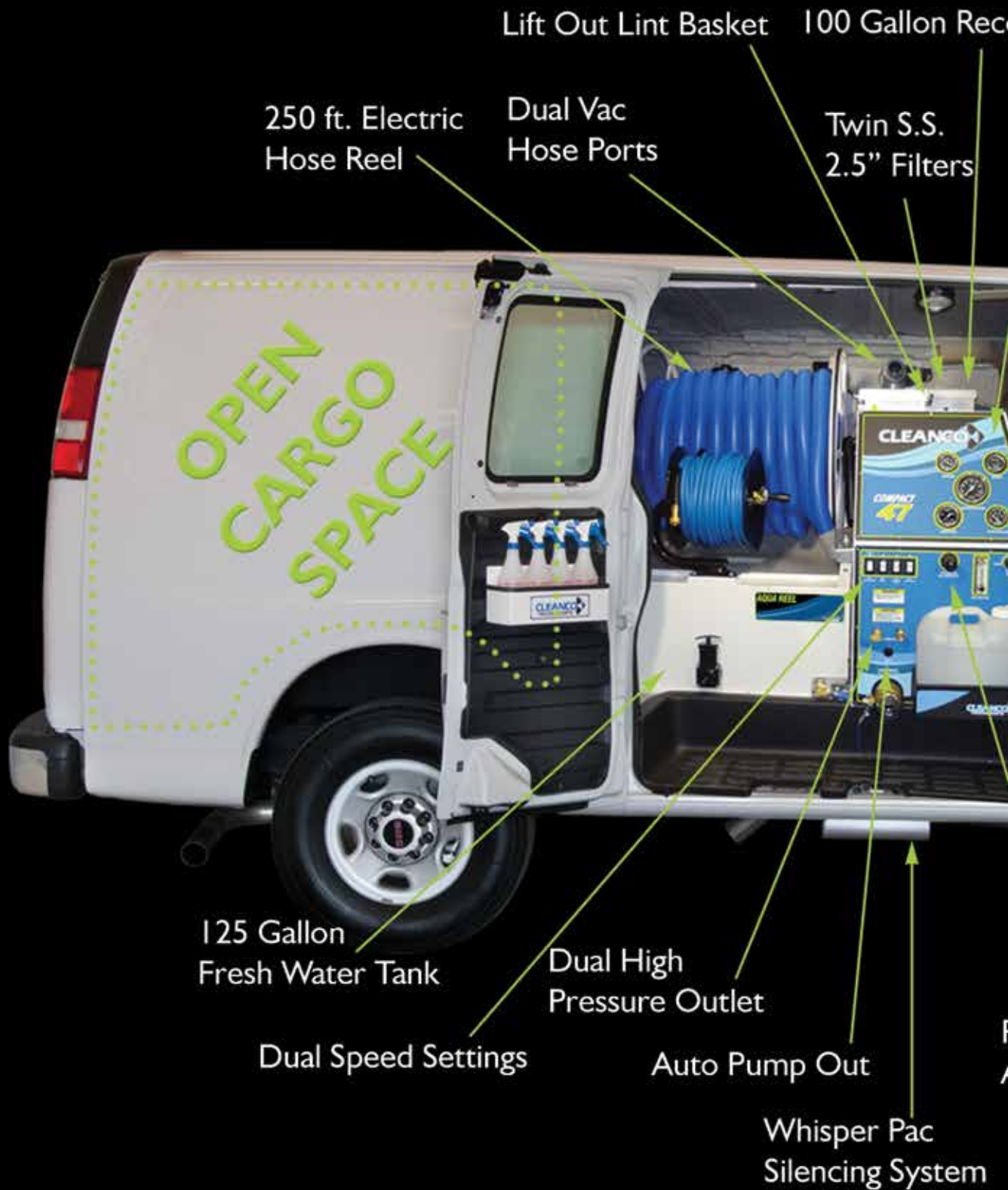
- H.D. Inner Solid Shaft
- H.D. Electric Clutch
- High Temperature, High Performance Bearings

CLEANCO AUTO DRAIN (C.A.D.)



Cleanco Auto Drain is externally mounted on the waste tank. Easily accessible for cleaning and servicing. The C.A.D. will produce a flow rate of 4.5 GPM under 14" hg. The C.A.D. has no filters or check valves to clog.

COMPACT PE



PERFORMANCE!

Recovery Tank Capacity

Full Instrument Panel

Front Integrated Storage Shelf

Roots Whispair Blower
with FloMax Airflow Technology

High Pressure 5CP Cat Pump

Electronic Throttle Module
For Precise RPM Control



Pressure
Adjustment

Oil Site Lines
Temperature
Adjustment

Multi Stage Heat
Exchanger with PTI
Produces Water Temperatures
Up to 240°F

PTO Direct Drive

WE HAVE THE RIGHT



COMPACT 45

Precision Balanced PTO Drive Shaft System	Two Engine RPM Settings 450 carpet, 100 upholstery
100 Gallon Waste Tank w/ "Flo Max" Airflo Technology	Twin Blower Filters & Lint Basket
Dual Vacuum Ports w/ Single Twist Lock Hose Connector	Roots Whispair DSL Vacuum Blower - up to 360 cfms
Whisper Pac Silencing System	5CP Cat Pump w/Hi Temp Seals & is Clutch Activated
"Heat Max" Dual Coolant Heat Exchanger System	P.T.I. (post thermo increase) Heat Exchanger up to 240°F
Quick Release Front Instrument Control Panel	Complete Gauge Monitoring Package
Dual Solution Quick Disconnects	Pump & Blower Oil View Lines
Easy Access Blower Lube Port	Chemical Jug & Holder
Truckmount Carpet Wand	100 ft x 2" Vacuum Hose
High Temp Auto Shut Down Sensor	100 ft High Temp Solution Hose
Park Brake Sensor	Waste Tank Full Shut Down Sensor
Embroidered Cleanco Jacket	Operations & Maintenance Manual
	*Optional 120 Gallon Waste Tank

ALL COMPACTS ARE BACKED BY A 5

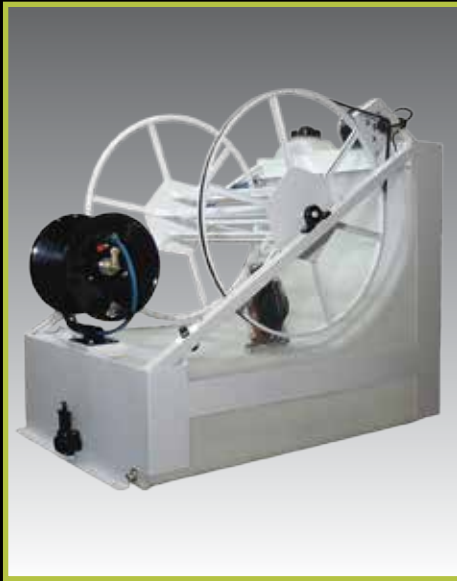
BEST MODEL FOR YOU



COMPACT 47

Precision Balanced PTO Drive Shaft System	Two Engine RPM Settings 450 carpet, 100 upholstery
100 Gallon Waste Tank w/ "Flo Max" Airflo Technology	Twin Blower Filters & Lint Basket
Dual Vacuum Ports w/ Single Twist Lock Hose Connector	Roots Whispair DSL Vacuum Blower - up to 490 cfms
Whisper Pac Silencing System	5CP Cat Pump w/Hi Temp Seals & is Clutch Activated
"Heat Max" Dual Coolant Heat Exchanger System	P.T.I. (post thermo increase) Heat Exchanger up to 240°F
Quick Release Front Instrument Control Panel	Complete Gauge Monitoring Package
Dual Solution Quick Disconnects	Pump & Blower Oil View Lines
Easy Access Blower Lube Port	Chemical Jug & Holder
Truckmount Carpet Wand	150 ft x 2" Vacuum Hose
High Temp Auto Shut Down Sensor	150 ft High Temp Solution Hose
Park Brake Sensor	Waste Tank Full Shut Down Sensor
Embroidered Cleanco Jacket	Operations & Maintenance Manual
	*Optional 120 Gallon Waste Tank

YEAR EXTEND-A-CARE WARRANTY



**125 Gallon Aqua Reel Tank
with Electric Reel**



120 Gallon Aqua Storage Tank



**Double Sprayer
Holder**



**Trigger Sprayer
Holder**



Furniture Tab Holder



Hydro-Force™ Holder



Foam Block Holder



Van Shelf 3 Tier



250-055
1-1/2" S-bend wand with a
12" wide head and two jets.
Standard with Compact units.