



COMPACT DIRECT DRIVE TRUCKMOUNT

With over 47 years of innovation and engineering refinements, the Compact direct drive truckmounts are known for quality craftsmanship and user friendly operation. Built for those tough residential and commercial cleaning jobs, the Cleanco Compact units are known as the workhorse in the industry.

Strategically placing the components and equipment in the van ensures even weight distribution, passenger safety, longevity and offers a space saving design.

VAN SPECIFICATIONS:

GM 2016-2020 with 4.8L or 6.0L engine

GM 2021+ with 6.6L engine

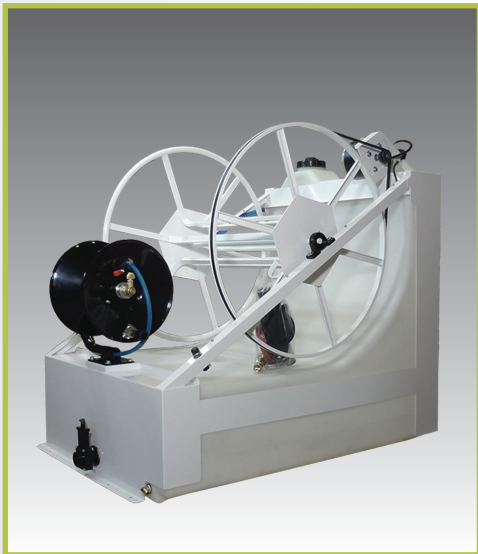


PROVEN DEPENDABILITY



COMPACT 47PTI SPECS: STANDARD & OPTIONAL COMPONENTS

Precision Balanced PTO Drive Shaft System	Two Engine RPM Settings 1450 carpet, 1100 upholstery
100 Gallon Waste Tank w/ "Flo Max" Airflo Technology	Twin Blower Filters & Lint Basket
Dual Vacuum Ports	Tuthill Tri-Lobe 4007 Vacuum Blower - up to 490 CFM
Whisper Pac Silencing System	5CP Cat Pump w/Hi Temp Seals & Clutch Activated
"Heat Max" Dual Coolant Heat Exchanger System	P.T.I. (post thermo increase) Heat Exchanger up to 235 ⁰ F
Quick Release Front Instrument Control Panel	Complete Gauge Monitoring Package
Dual Solution Outlets	Pump & Blower Oil View Lines
Easy Access Blower Lube Port	Chemical Jug & Holder
ETM (Electronic Throttle Module Control)	Park Brake Sensor
High Temp & Waste Tank Full Auto Shut Down Sensors	Operations & Maintenance Manual
150' Solution Hose & 2" Vacuum Hose with 10' Lead	Titanium Carpet Wand
Optional Last Step Chemical Injection	Optional 125 Gallon Aqua Reel Fresh Water Tank
Optional External Pump Out (APO)	Optional 120 Gallon Waste Tank



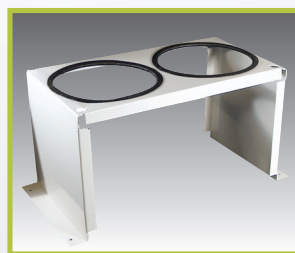
125 Gallon Aqua Reel Tank



Hydro-Force™ Holder



Foam Block Holder



Double Sprayer Holder



Furniture Tab Holder