

## **HEATER MATE – OPERATION MANUAL**

**NOTE: A minimum of 100psi is required to operate the External Heatermate**

For proper operation of your Heater Mate, follow these steps:

- The External Heater mate is an inline heat exchanger designed to fit between the portable extractor out going solution quick connect and wand.
- Total jet opening on your wand should be a maximum of .03 to maintain maximum heat performance.

e.g. Single jet wand 1 - .03 jets  
Dual jet wand 2 - .015 jets  
3 - jet wand 3 - .01 jets

- When using a 100 - PSI diaphragm pump with a Heater Mate the pump should be equipped with a limited internal bypass kit. This is to prevent pump pulsating, and premature wear on internal pump components.
- It is recommended that the Heater Mate be rinsed with a diluted coil flush solution once a month to prevent hard water or alkaline deposits from building up inside the unit.

### **CARPET CLEANING**

The heater Mate will deliver 60 – 65°F temperature “RISE” up to a maximum of 200°F. The hotter the water that is put into the solution tank the hotter the water gets after going through the Heater Mate to your wand.

- The heater Mates maximum heat rise is accomplished base on normal carpet cleaning of 50% trigger on 50% trigger off. This enables the Heater Mate heat exchanger to maintain maximum temperature for the cleaning solution.

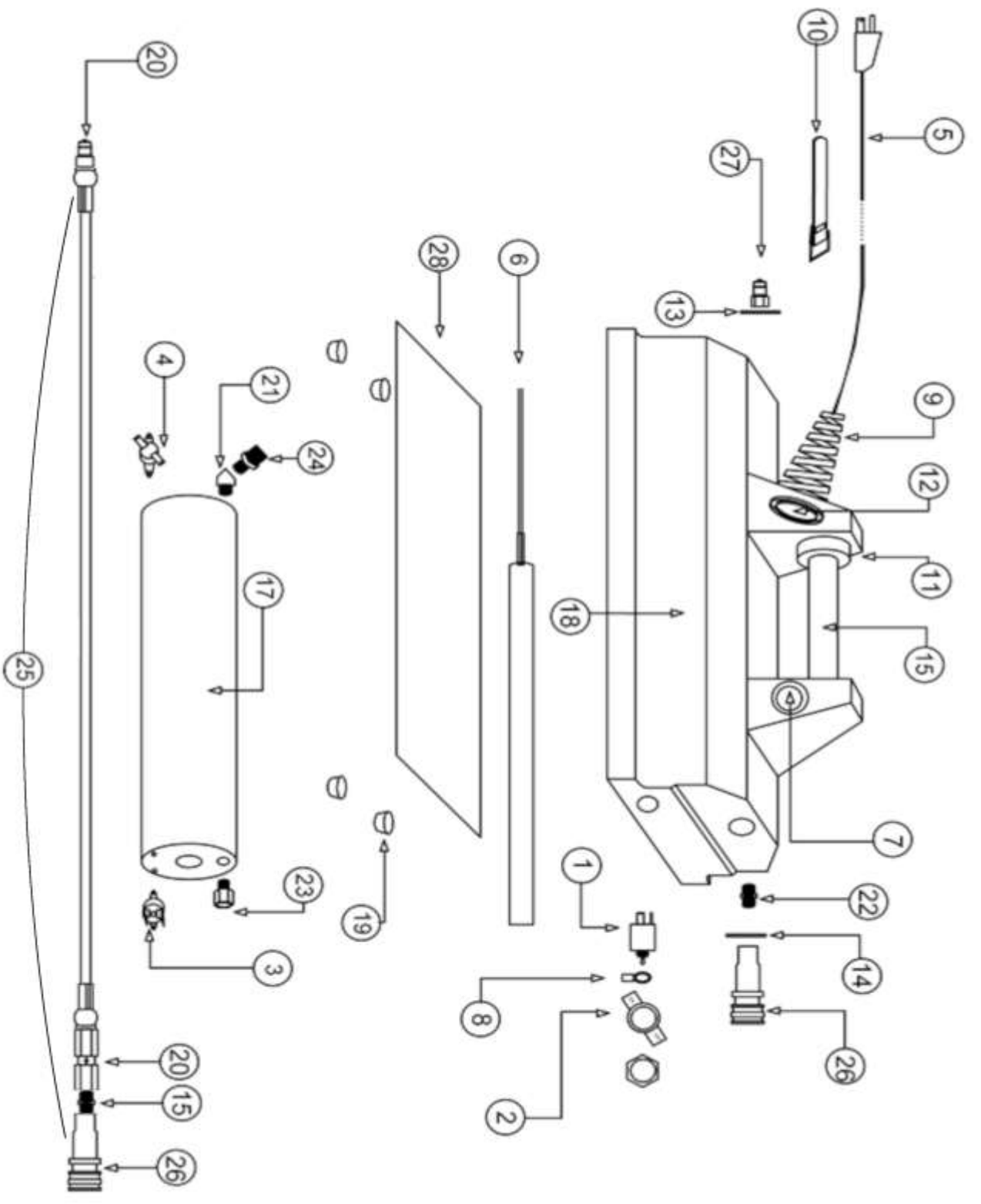
**NOTE: Speed cleaning with the wand trigger on at all times will not maintain maximum heat generated by the Heater Mate.**

### **UPHOLSTERY CLEANING:**

The Heater Mate will deliver constant 200°F temperature when cleaning upholstery under normal conditions.

### **WARNING:**

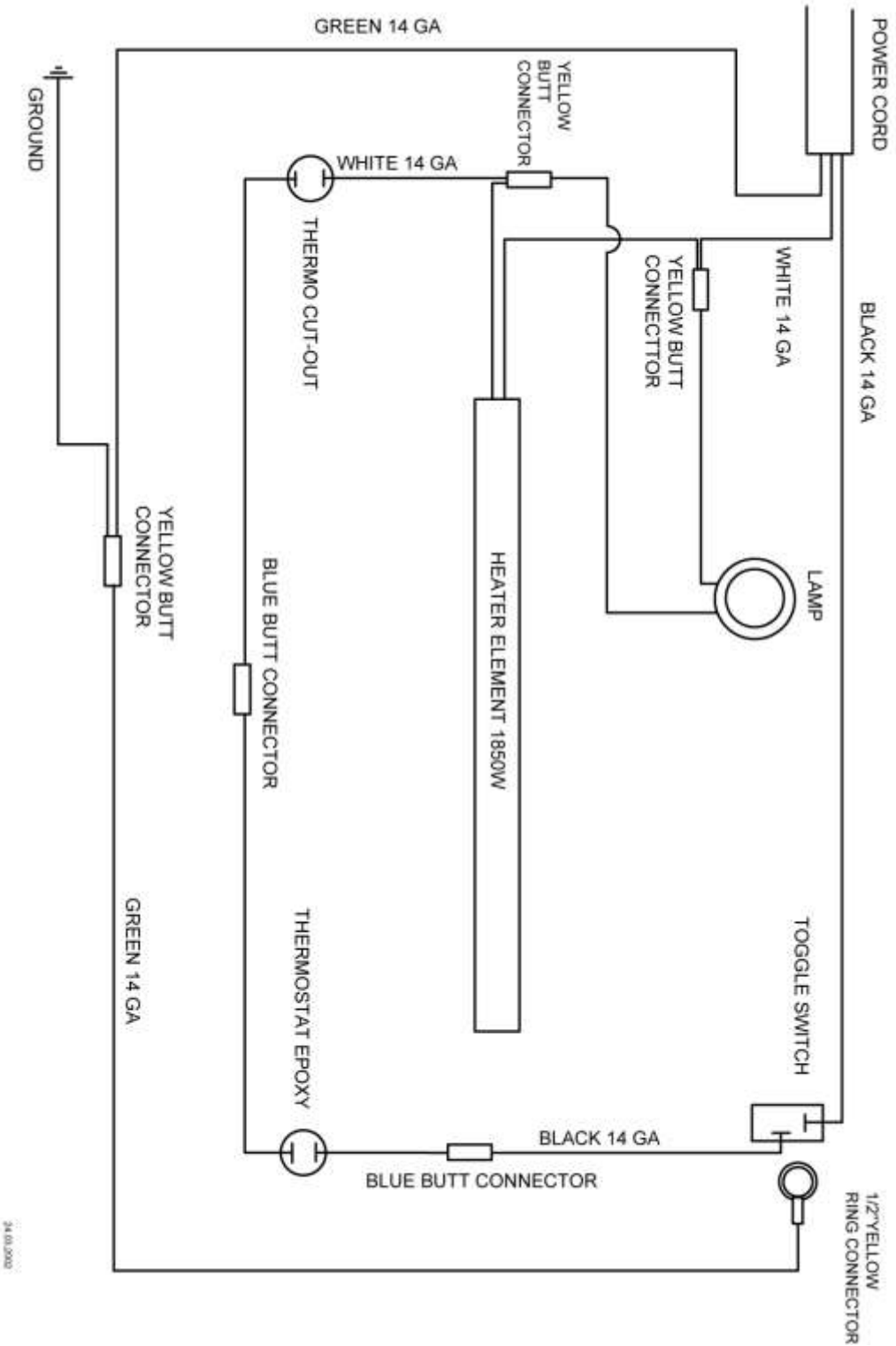
- Heater mate heat exchangers are designed to heat water only. Never attempt to heat solvents with this unit as serious injury could result.
- Do not expose Heater Mate heat exchangers to temperatures below 32°F (0°C), damage to the unit will occur if subjected to temperatures below freezing.



## EXTERNAL HEATER MATE (240-305)

REF	PART NO.	DESCRIPTION	NOTES:
1	305-210	Toggle Switch	
2	305-225	Switch Plate ON/OFF	
3	305-245	Thermo Cut-Out	
4	305-265	Thermostat 200F	
5	315-015	Cord, 25' Black 14/3 SJTW-A	
6	318-010	Heater Element 1850W x 9"	
7	320-110	Lamp, Panel 110v	
8	325-220	Terminal Ring, 1/2 Yellow	
9	335-015	Strain Relief, 14 Gauge	
10	350-005	Strap Velcro	
11	385-050	Collar, 1/2 Shaft - HM	
12	400-165	Locknut, 1/2"	
13	415-155	FW, 1/2 SS (Stand/Max OD)	
14	415-156	FW, 1/2 SS	
15	480-235	S.S Tube, 1/2 O.D x 3/8 I. D.	
16	490-007	Foamed Casing Round 1850W – EXT HM	Complete
17	490-015	Alum (Round) Casing	
18	495-500	Housing, HM External Blue	
19	498-104	Foot Rubber	
20	550-035	Check valve 1/4	
21	555-180	Elbow 45, 1/8 Street Extruded	
22	555-272	Hex Nipple, 1/4 Long	
23	555-510	Reducing ADPT, 1/4 FPT x 1/8 MPT	
24	555-540	Reducing nipple, 1/4 MPT x 1/8 MPT	
25	263-512	Heatermate Pulse Hose Assy	
26	580-010	Q.C. 1/4" Fem (Closed)	
27	580-015	Q.C. 1/4" Male (Closed)	
28	800-035	Alum, .100	

# EXTERNAL HEATER MATE WIRING





## ***HEATERMATE WARRANTY***

**NOTICE:** Review this document carefully as this document contains limitations and exclusions.

### **PART I**

Esteam Manufacturing Ltd., (hereinafter referred to as Esteam), warrants each new Heatermate, subject to the limitations as defined in the specific details of its warranty coverage defined below.

### **LIMITED LIFETIME HOUSING WARRANTY COVERAGE**

In the event a defect occurs in a Heatermate polyethylene housing within five years of receipt by the original customer, Esteam will, if satisfied on its examination that the failure is due to defective material or workmanship, repair or replace the Heatermate polyethylene housing at no cost to the original customer.

In the event a defect occurs in a Heatermate polyethylene housing subsequent to five years (and thereafter for life) of receipt by the original customer, Esteam will, if satisfied on its examination, that the failure is due to defective material or workmanship, provide to the original customer only, a new Heatermate polyethylene housing at 50% of the published retail pricing basis used by Esteam.

### **90 DAY LIMITED WARRANTY COVERAGE**

Esteam warrants all switches, thermostats, and thermocut-outs to be free of defects in material or workmanship from any defects occurring within 90 days of receipt by the original customer, further subject to the limitations stated below.

### **12 MONTH WARRANTY COVERAGE**

Subject to the Limited Lifetime Warranty and the 90 Day Limited Warranty: Esteam warrants all remaining items on the Heatermate to be free from defects in material or workmanship (excluding labour charges) for a period of 12 months from date of receipt by the original customer; further subject to the limitations stated below.

## **PART II – REPLACEMENT PARTS (UNDER WARRANTY)**

Replacement warranty parts will be genuine Esteam parts, or parts of similar kind and quality.

All replacement warranty parts are warranted to be free from defects in material or workmanship from the date of the original Heatermate purchase for the balance of the original warranty period: namely 90 days, 12 months, or the Lifetime, which is applicable; all in accordance with the terms of Part I of this warranty.

## **PART III – LIMITATIONS ON WARRANTY COVERAGE**

### **WHAT IS NOT COVERED:**

Notwithstanding any other term or covenant of Esteam contained herein, the following provisions shall apply:

- (i) No warranty is provided for any Esteam product which has failed as a result of freezing, fire, misuse, alteration, improper amps, or voltage, accidental damage, improper maintenance, unauthorized repairs, abuse, neglect or operation of an Esteam product not expressly recommended or contemplated by Esteam; and
- (ii) No warranty is provided for mechanical or electrical breakdown caused by scale, hard water build-up, improper use of chemicals or resins, damage due to environmental conditions, and acts of God, or other events beyond the control of Esteam; and
- (iii) No warranty is provided for mechanical or electrical breakdown or failure of an Esteam product resulting from ordinary wear and tear, or the consequences thereof; including but not limited to the gradual reduction of the operating performance of the product. The determination of what is or is not ordinary wear and tear is at the sole discretion of Esteam; and
- (iv) No warranty is provided for damage caused by the failure of non-warranted parts and/or accessories, even if warranted parts are damaged as a result of the failure of a non-warranted part; and
- (v) No warranty is provided for damage resulting from failure by the customer to maintain scheduled maintenance requirements. The Heatermate system has many parts which must either be replaced or checked for wear on a regular basis. The Heatermate requires regular maintenance, service and attention by the customer; and
- (vi) No warranty is provided as to any extra expenses incurred by the customer, including but not limited to economic, incidental, consequential loss or damage (e.g. all labour charges, rental equipment, down time, lodging,

commercial or business loss of any nature or kind due to product failure); whether direct or indirect, exemplary or punitive damage or loss, and whether in contract, tort or otherwise; and

- (vii) No warranty is provided as to failure of any cosmetic item or finish, labelling, silk screening, decals, paint, trim, or other similar decorative items; and
- (viii) Brass, rubber and synthetic rubber parts (e.g. "O" rings, diaphragms, gaskets, seals, grommets) are considered expendable in normal use, and are therefore not included in any warranty by Esteam.

#### **PART IV – EXCLUSION OF LIABILITY**

Esteam makes no warranties or representations, either expressed or implied, oral or written, in fact, or by operation of law, or otherwise, except as expressly stated herein as to the 90 day Limited, 12 month and Lifetime Extended warranties. Esteam, its officers, directors, agents, dealers and its affiliates (and their respective officers, directors, agents, and dealers) shall not be liable to the customer nor to any party for any liability, including without limitation, strict liability, liability for loss, injury, or damage due directly or indirectly to the use or operation of the Esteam Heatermate; consequential, exemplary and/or punitive damage or loss, whether in contract, tort, or otherwise.

#### **PARTS V – RETURN GUIDELINES**

Defective items must be replaced through a local Esteam Distributor. Replacement parts will be sent via prepaid regular ground service to the distributor. The defective part must be returned F.O.B. to Esteam's factory within 30 days including a letter providing the Heatermate serial number, date of purchase, material authorization number, and customers name. If applicable, credit will be issued after the item has been evaluated by Esteam. **Failure to comply with return policy will void the warranty on that item.**

#### **PART VI – CREDIT POLICY**

All customers purchasing parts through an Esteam distributor must arrange credit directly with that distributor.

#### **PART VII – TRANSFERABILITY**

This warranty is not transferable to any subsequent owner.

#### **PART IX – NOTICE – CUSTOMER OBLIATIONS**

- (i) Your responsibility as a customer includes but is not limited to cleaning, lubricating, seansonal maintenance, (e.g. winterizing), replacement of worn parts and all regular scheduled or unscheduled maintenance.

- (ii) Any claim for warranty must be presented to Esteam or its authorized dealer, prior to the expiration of the time limitations specific and not thereafter, otherwise any warranty is void.
- (iii) Notwithstanding the generality of the foregoing customer obligations, Esteam does hereby bring to the attention of the customer, these specific maintenance operating requirements of the Esteam Heatermate to validate its warranty.

(a) Chemical Warning:

Any improper use of chemicals shall void any Esteam warranty and thusly exclude any liability of Esteam. No dry cleaning chemical may be used in a Esteam Heatermate; any such use may result in fire or damage to the Heatermate.

- (b) The Heatermate must be flushed with clean fresh water after every use. Any build up of hard water deposits or chemical build up within the Heatermate will void any Esteam warranty thusly exclude any liability of Esteam.

The foregoing constitutes Esteam's entire warranty and no other warranty, liability, contingency or responsibility, directly, indirectly, consequential or in any other way connected with the sale or operation of an Esteam products, machines, or chemical is expressed or implied.





## WARRANTY REGISTRATION / DELIVERY ACCEPTANCE

This form must be completed and returned to Esteam Cleaning Systems to activate your warranty.

Esteam would like to take this opportunity to point out a few operating and safety recommendations for your consideration.

\* All units cords have a ground plug pin for your safety, never remove or operate any equipment if the ground pin on the plug has been removed.

\* Defoamer is to be used in all machines. Improper use of chemicals will void warranty. Drycleaning solvents cannot be used in any Esteam extractors.

\* Do not over fill recovery tanks as this will damage the vacuum motors. Vacuum motors showing any signs of moisture contamination will not be covered under warranty.

Model # \_\_\_\_\_ Serial # \_\_\_\_\_

Name: \_\_\_\_\_

Address: \_\_\_\_\_

City: \_\_\_\_\_ Province/State: \_\_\_\_\_

Postal Code/Zip: \_\_\_\_\_ Date of Purchase: \_\_\_\_\_  
Month / Day / Year

Purchased From: \_\_\_\_\_

By signing this form I \_\_\_\_\_, accept the terms and conditions of the warranty.  
(print)

I have been fully instructed in the safe operation and use of this equipment.

Signed: \_\_\_\_\_ Date: \_\_\_\_\_

Mail Warranty Registration / Delivery Acceptance to:

Esteam Manufacturing Ltd.  
3750-19th Street NE  
Calgary, Alberta, Canada  
T2E 6V2